

PTH

India Steel Structure Warehouse

1. Project time : 2012
2. Project site : India
3. Project scale : 12890m²
4. Product type : Steel structure
5. Usage : Warehouse
6. Project features : Large-span, multi-span projects



Project Design



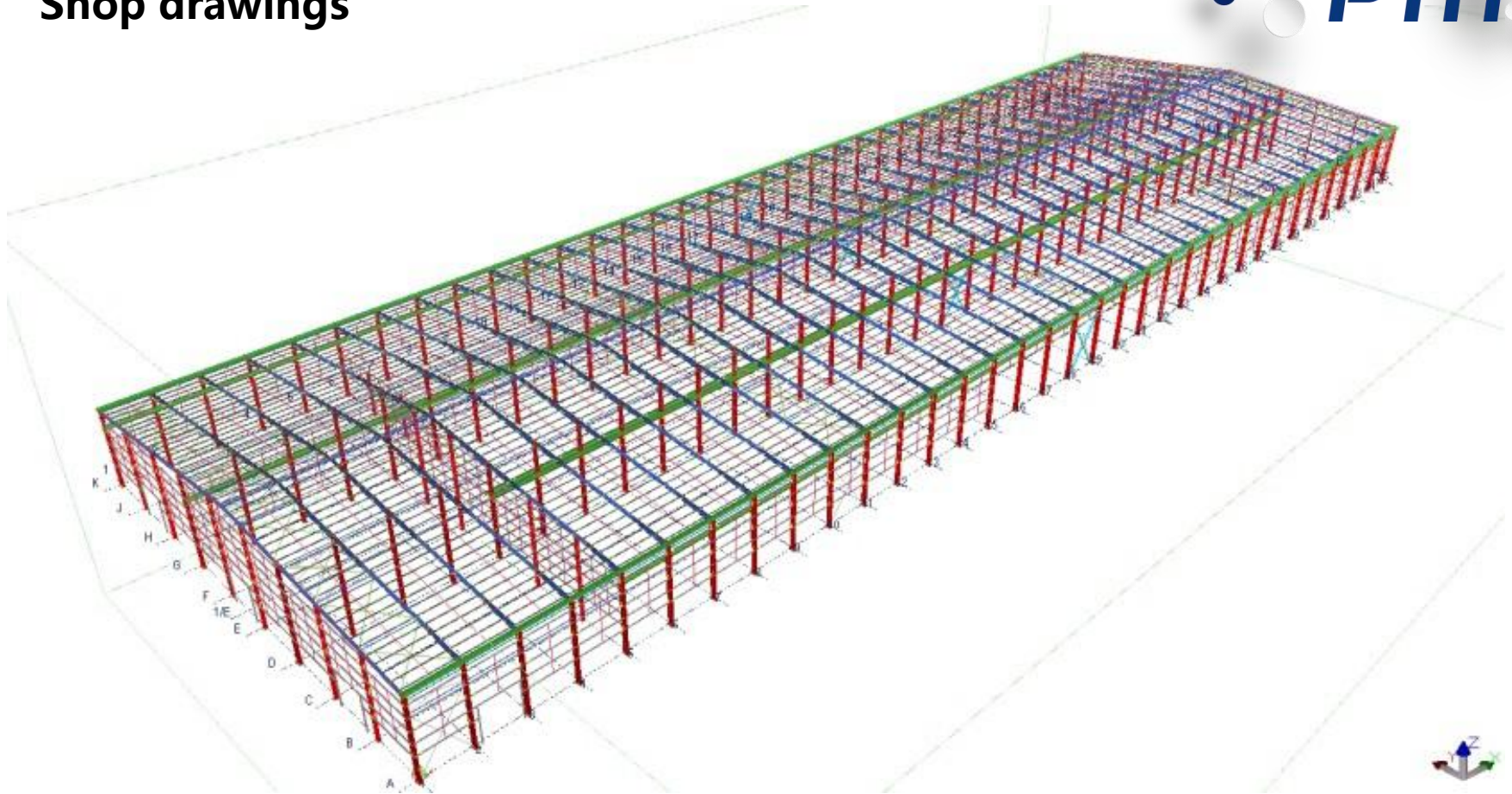
PTH has more than 100 R&D design and technical engineers from home and abroad, and provides customized design services. Using the relevant information data of the construction project as the basis of the model, the building model is established, and the real information of the building is simulated through digital information simulation. At present, we have completed the research and development of the Revit family library of various products of the company, laying the foundation for efficient and accurate design, and at the same time can fully show the detailed nodes and 3D renderings of our company's products to customers.

Project Features:

This steel structure warehouse is built in northern India, the size is 64.5 * 200 * 13m, the total area is 12890m². This is a factory producing building materials. The wall is made of 75mm PU sandwich panel, with good insulation and fire resistance.

The roof is 50mm XPS sandwich panel, strong and fireproof. There is a skylight board on the roof, so natural lighting is better during the day. In order to ensure the air circulation in the warehouse, there are 60 ventilation fans on the roof.

Shop drawings



PTH deepening division adopts Tekla and FRAMECAD Structure deepening design software. Before deepening the design, you need to check whether the technical information of the design drawing meets the technical requirements of the deepening design, and then carry out the deepening design and production according to the final design drawing.

When deepening the design, it is necessary to ensure that the product assembly size deviation standards, welding quality technical requirements, structural connection nodes, product anti-corrosion processes, etc. meet the design technical specifications.

Production delivery



purchase

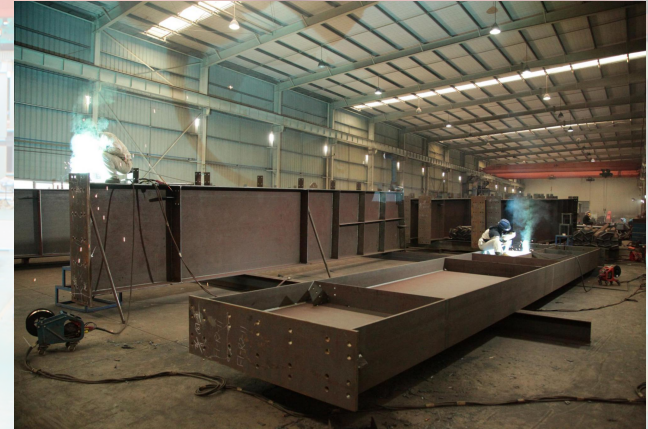
PTH has a mature procurement supply chain, including product raw materials, kitchen and bathroom accessories, household equipment and other supporting facilities.

produce:

PTH has hundreds of fully automated mechanized production lines, which can be combined with efficient production arrangements to provide a strong guarantee for timely delivery of customer orders.

transport:

PTH has more than 10 years of international logistics experience, and can provide customers with the best transportation routes, customs declaration, commodity inspection and other services.



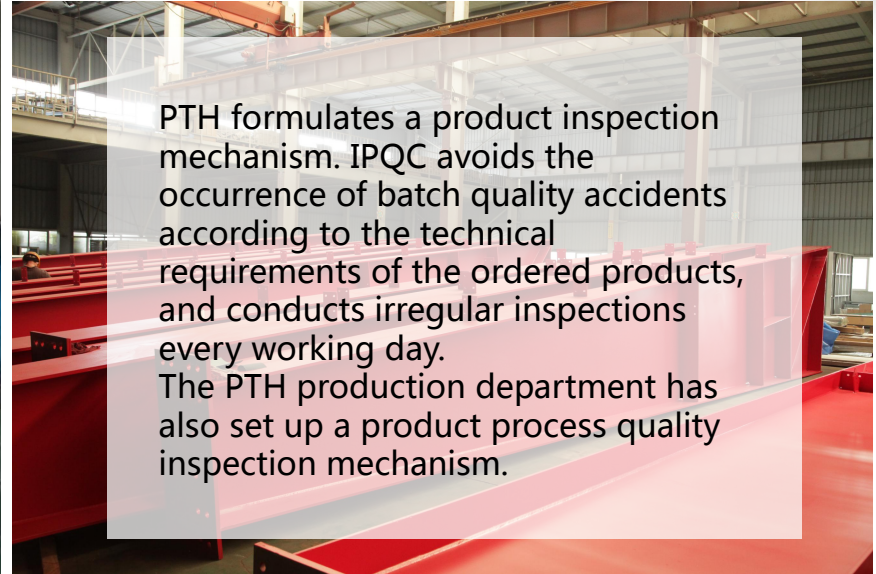
Project production scenarios



PTH follows the ISO9000 quality system document framework, and manages and controls the products. From the beginning of raw material procurement, we strictly control and control.

The original and auxiliary materials and outsourced products need to be inspected. ICQC conducts inspection according to the "original and auxiliary material inspection standards" and confirms that the material quality/information meets the requirements of the design specifications. ICQC uploads the material inspection records, quality documents, and experimental reports to the ERP system

Project production scenarios



PTH formulates a product inspection mechanism. IPQC avoids the occurrence of batch quality accidents according to the technical requirements of the ordered products, and conducts irregular inspections every working day. The PTH production department has also set up a product process quality inspection mechanism.



Packing and loading



PTH designs reasonable packaging solutions based on product characteristics/customer requirements. Each unit component adopts independent small packaging, which is convenient for transportation and installation. At the same time, it is easy to load and unload, which reduces the labor cost.



Project Installation



PTH will provide complete and detailed installation drawings for the products. We have professional photography and post personnel, can provide installation video for the product, intuitively display the installation steps and installation details of the product. PTH has on-site installation guidance experience for dozens of projects such as Mozambique Light Steel Villa Resort and Chile Container Camp.

Project site photos



Project site photos



Customer feedback



We use the BIM system to manage and operate the entire project. PTH can provide remote telephone consultation and guidance according to customer needs, or can provide on-site maintenance and repair services according to customer needs.

In after-sales service, PTH handles customer feedback problems in a timely manner, which improves customer satisfaction with PTH



Customer feedback



Customer feedback



URL : www.pthouse.com / www.putianhouse.com
E-mail : inquiry@putianhouse.com

Customer feedback



**ALSTRONG ENTERPRISES
INDIA (P) LTD.
UNIT-II
IGC PHASE-II, SAMBA**

