

PTH

Family house in New Caledonia

1. Project No : PT180401
2. Date : 2018
3. Location : New Caledonia
4. Scale : 4 units 20ft container
5. Category : Container house
6. Function : Family house
7. Characteristics : 20ft flat pack container, Fast installation and reasonable space utilization



Project Design

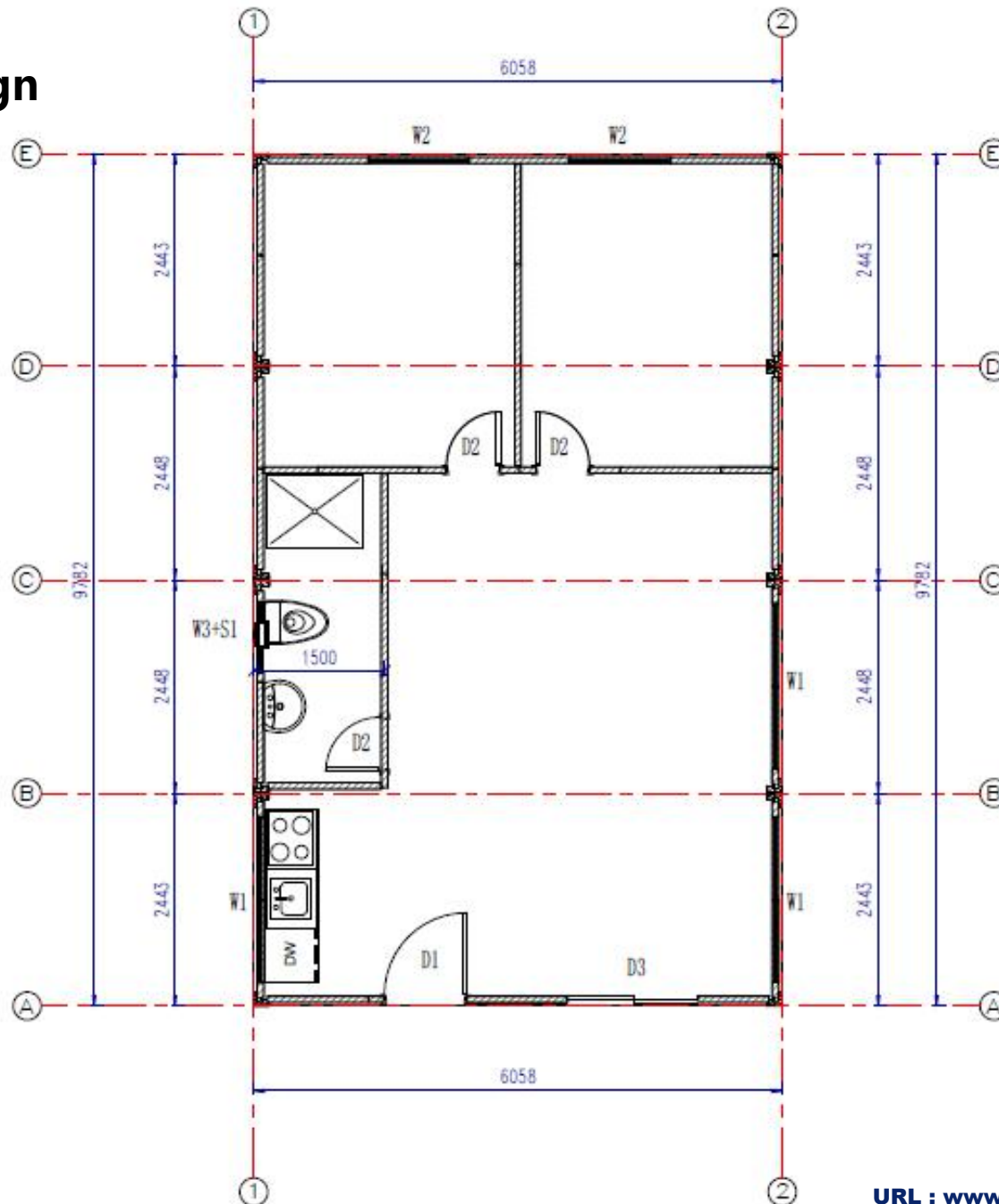


Size: 6058x2438mm , Height: 2591mm , Indoor net height: 2320mm. Roof is 70mm PU integrated foam, wall is 75mm EPS sandwich panel, Floor is 18mm fiber cement board + PVC floor

Material parameters:

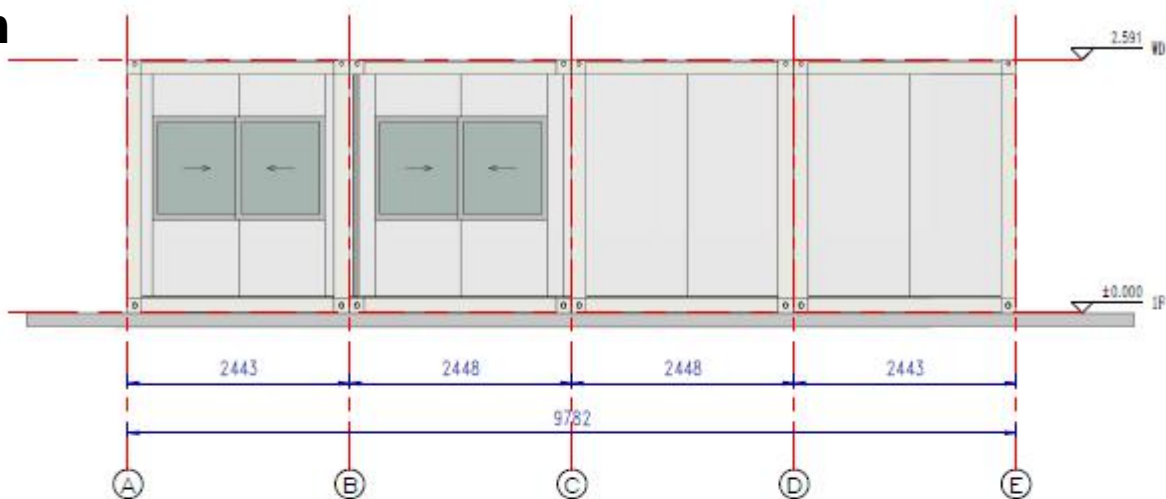
1. Box frame: All profiles are made of Q345B low-alloy carbon structural steel. All profiles of the frame are hot-dip galvanized. After the welding machine is completed, the whole powder spray paint is processed.
2. Box top board: 70mm PU foam roof, color steel plate upper panel thickness 0.40mm, lower panel thickness 0.40mm, color white gray, aluminum zinc zinc AZ50g/m²+PE baking paint 15/5um.
3. Wall panel: 75mm EPS sandwich panel wall surface. EPS density 12kg/m³, color steel plate thickness 0.40mm, aluminized zinc AZ50g/m²+PE paint 15/5um
4. Ground parameters: 1.8mm PVC floor + 18mm cement fiber board. The color of PVC floor is wood grain. The PVC floor of the bathroom is replaced with a 2.5mm PVC floor with gray dots.
5. Door leaf: D1: 950x2080mm inner sleeve steel door D2: 700x2000mm plastic steel door D3: 1500x2100mm aluminum alloy tempered glass sliding door (insect screen)
6. Sash: W1: 1130x1100mm nested aluminum alloy single glass sliding window (insect screen) W2: 1130x1100mm nested aluminum alloy single glass sliding window (insect screen) W3: 800x400 aluminum alloy single glass sliding window (embossed glass + insect screen) S1: 300x300mm PVC ventilation fan

Design

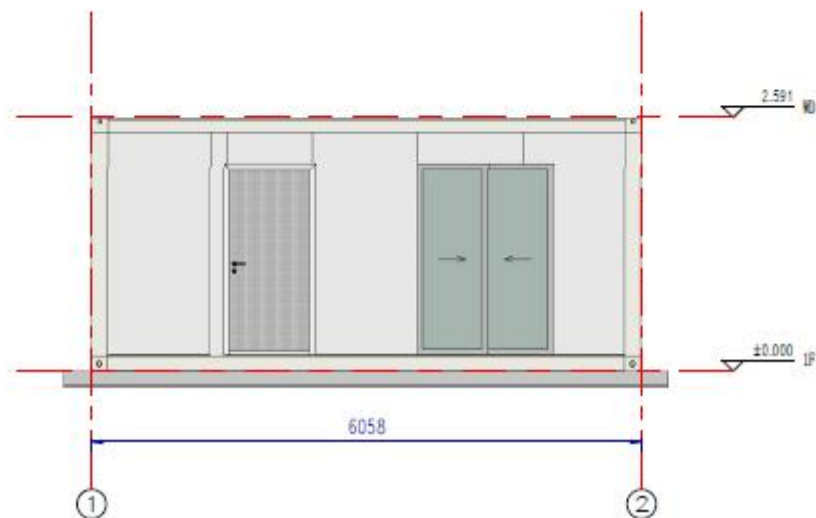


The preliminary design is made in accordance to client's requirement and local building code. After getting the permission by local authority, PTH will do the shop drawing for production.

Design



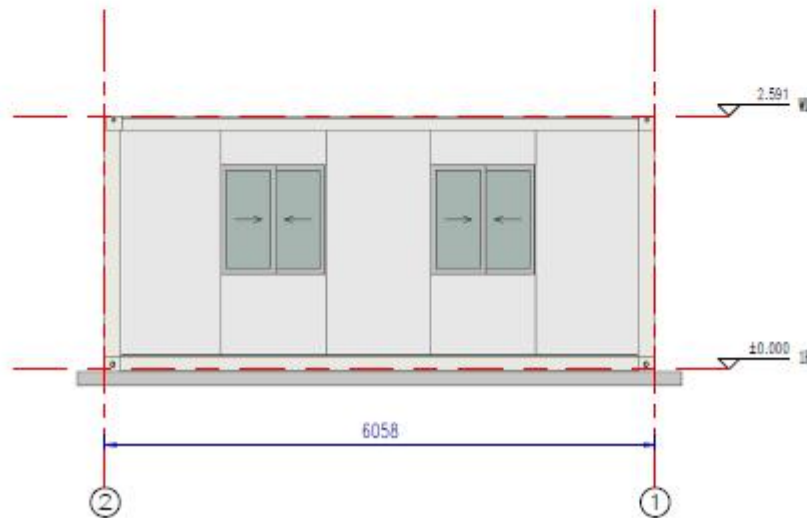
东立面布置图



Design



西立面布置图



Design



Design



PRODUCTION & DELIVERY



PROCUREMENT :

PTH has a mature procurement supply chain, including product raw materials, kitchen and bathroom accessories, home equipment and other supporting facilities. Each year, PTH conducts quality assessments of suppliers, resolutely rejects unqualified suppliers, and guarantees the quality of products from the source.

PRODUCTION :

PTH owns hundreds of fully automatic mechanized production lines, which ensures high production efficiency and timely delivery. In the manufacturing process, PTH can provide production progress reports to customers through pictures and video. PTH has a professional quality inspection team which takes strict quality control in each process, and make sure defect product never be delivered to client.

TRANSPORTATION :

PTH, who has more than 20 years of international logistics experience. can provide customers with the best transportation routes, customs declaration, commodity inspection and other services, and truly realizes "door to door."



PRODUCTION PICTURES



Quality is the life of a enterprise and the foundation of sustainable development. PTH strictly follows the ISO9000 quality system and make quality control in each process from material procurement to finish product delivery.

For the outsourcing raw material and accessories, it is reported to the ICQC team for inspection. ICQC will inspect according to "Raw Material Inspection Regulations" , make sure the material technical specs and quality meets GB standard, then upload the inspection record, QC document and test report to ERP system.



PRODUCTION PICTURES



PTH makes random inspection system for the manufacturing process. IPQC makes daily random inspection according to the quality requirement of each order, so as to avoid defect products.

The production team also set up process quality report system. Only those qualified products can be transferred to the next process.



Feedback



Feedback



URL : www.pthouse.com / www.putianhouse.com
E-mail : inquiry@putianhouse.com

Feedback



Feedback

