

PTH

School Project

1. Project No. : PT180435

2. Date : year 2018

3. Location: PNG

4. Scale : more than 5000m²

5. Category : Container house, framed cad system, double C system.

6. Function : school

7. Characteristics: comprehensive application of container house, light steel and double C products, the overall solution of the school multifunctional area.



PROJECT DESIGN

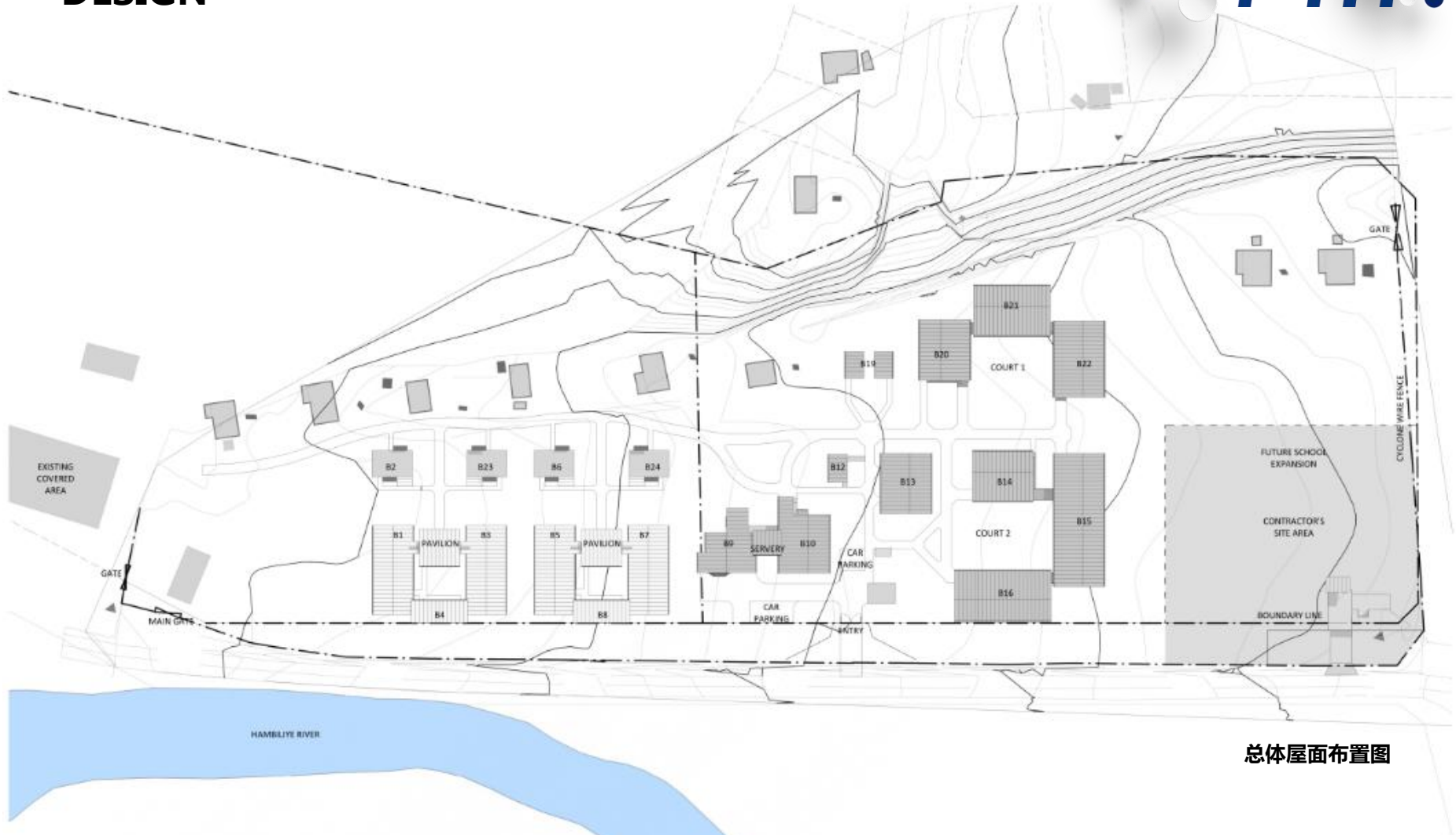


PTH owns 100+ architect and engineers at home and abroad, to provide customized design service for client with different requirements. We use the relevant information data of construction projects as the basis of the model to build the building model, and simulate the real information of the building through digital information simulation.

At present, we have finished the Revit research and development of company's products, laying a solid foundation to finish design effectively and accurately and also presenting details and three dimensional effects of our company's products to customers.

Project features: it is a school project invested by the Australian government and contains multiple functional areas, including staff dormitory, student dormitory, restaurant, toilet, classroom, library, computer room, laboratory, etc. The staff dormitory adopts the local traditional style, framed steel structure. The student dormitory, dining room and other function rooms use the double C structure and PIR sandwich panel to meet the needs of large spaces. The double C components are all powder coated and the overall appearance is more beautiful. The toilet is made of Putian's flat pack container, which is easy to install and move overall. The entire project is produced in accordance with Australian standards, both in terms of structural design and material selection in accordance with Australian standards.

DESIGN



总体屋面布置图

The preliminary design is made in accordance to client's requirement and local building code. After getting the permission by local authority, PTH will do the shop drawing for production.



OVERALL VIEW

B22 - CLASSROOM 1 AND 2

B21 - CLASSROOM 4

B20 - CLASSROOM 3

B19 - STUDENT AMENITIES

B12 - STAFF AMENITIES

B10 - DINING

B24 STAFF HOUSE 4

B6 STAFF HOUSE 2

B23 STAFF HOUSE 3

B3 - FEMALE DORM 2

B2 STAFF HOUSE 1

B1 - FEMALE DORM 1

B15 - SCIENCE LABS

B14 - COMPUTING & DESIGN

B16 - RESOURCE CENTRE

B13 - STAFF STUDY

B9 - KITCHEN

B7 - MALE DORM 2

B8 - MALE DORM AMENITIES

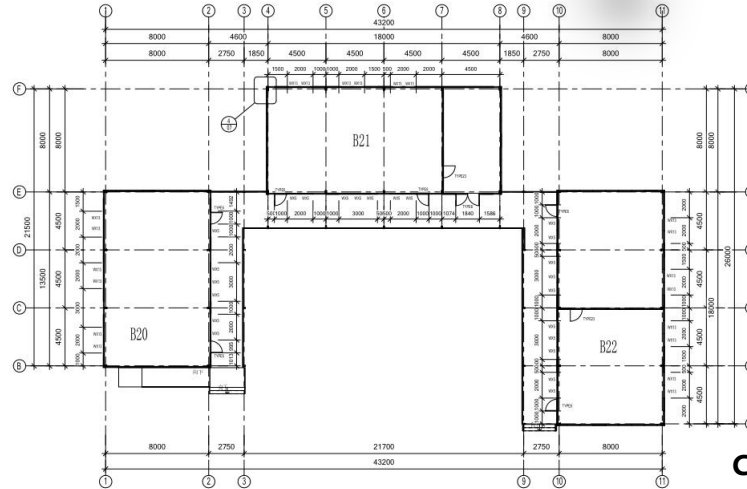
B5 - MALE DORM 1

B4 - FEMALE DORM AMENITIES

DESIGN



- a.4 x dormitory (each 2 for male and female) , 26beds in one dormitory
- b.1x (resource center)
- c.1x science labs
- d.1x computer&design
- e.1x staff study
- f. 3x classroom
- g.1x dinning , 104 seats
- h.Corridor and access



CLASSROOM DESIGN

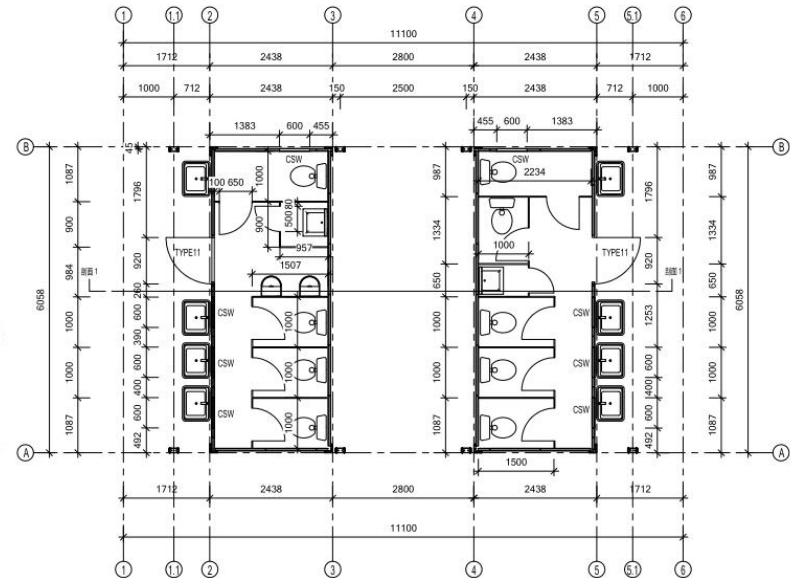


DESIGN



container

- a. 1x 40ft kitchen (40' container)
- b. 1x staff amenities (20' container)
- c. 1x pantry (20' container)
- d. 2x student amenities (2 x 20' containers)
- e. 2x student amenities (2 x 20' containers)



STUDENT AMENITIES DESIGN

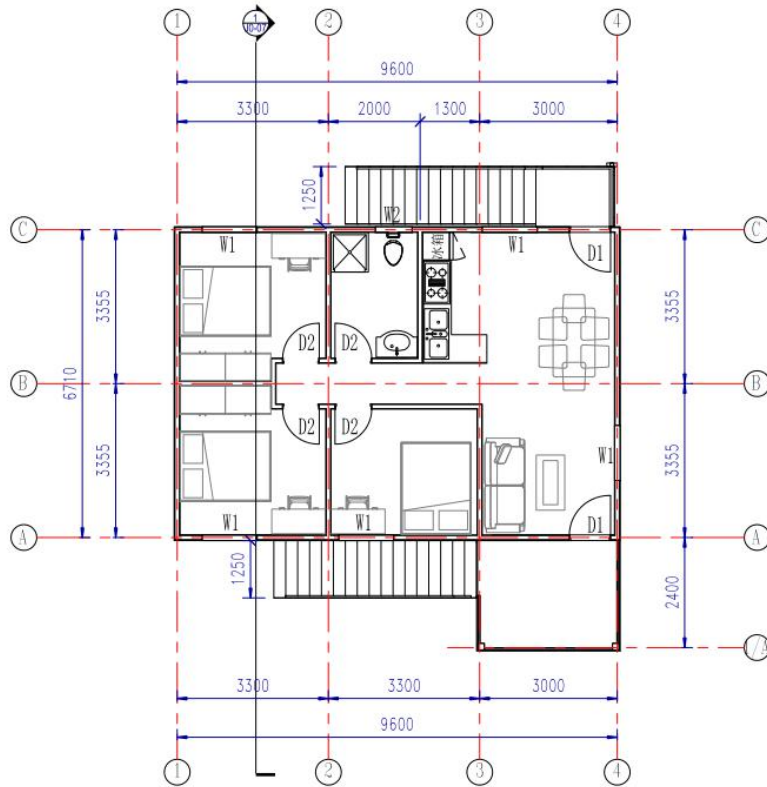
URL : www.pthouse.com / www.putianhouse.com

E-mail : inquiry@putianhouse.com

DESIGN

Framecad system house

4x staff house (luxury house with 3 bedrooms)



STAFF HOUSE DESIGN

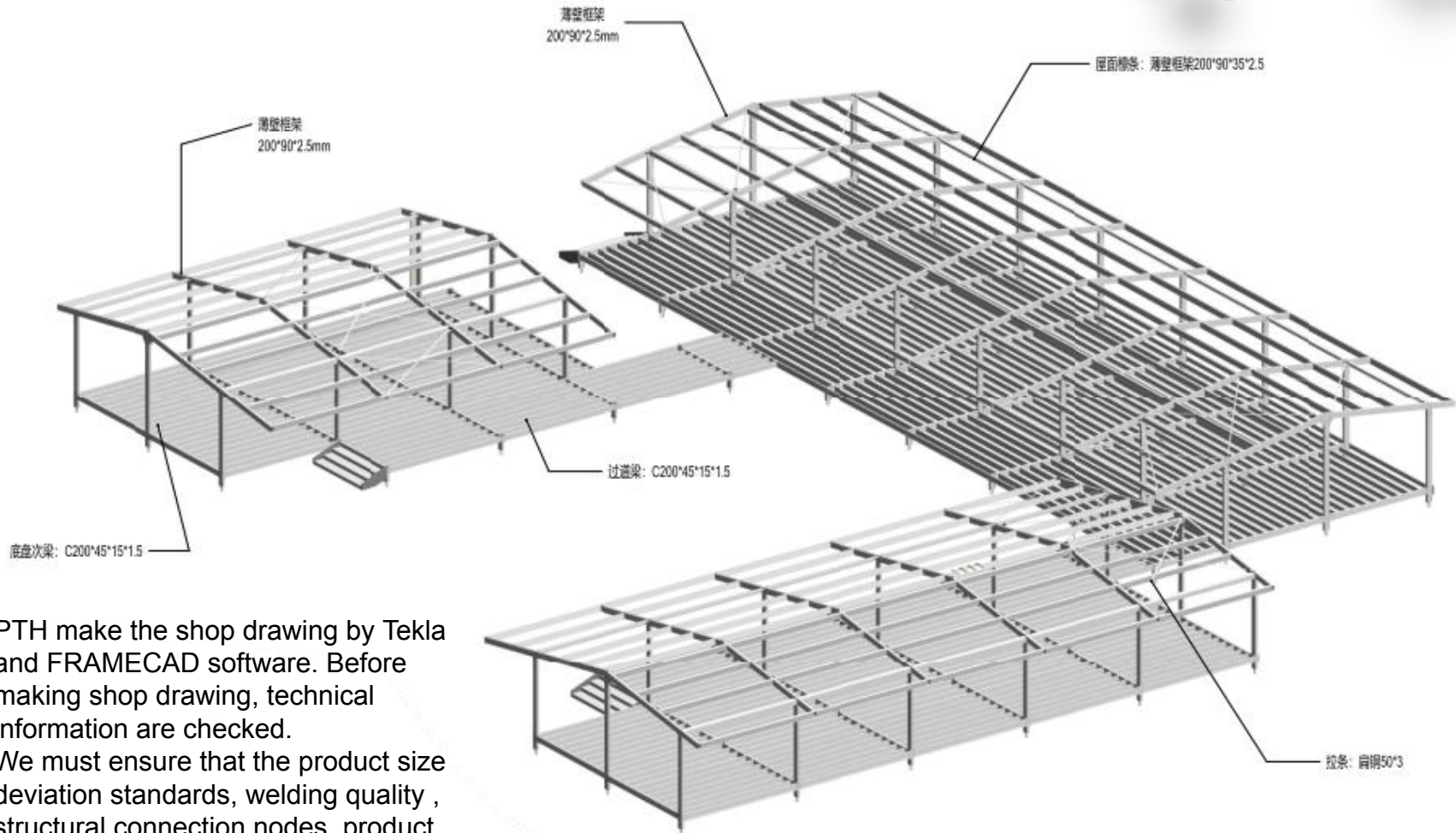


3D 1



3D 2

SHOP DRAWING



PTH make the shop drawing by Tekla and FRAMECAD software. Before making shop drawing, technical information are checked. We must ensure that the product size deviation standards, welding quality , structural connection nodes, product anti-corrosion processes, etc. meet the required technical specifications.

PRODUCTION AND DELIVERY



PROCUREMENT :

PTH has a mature procurement supply chain, including product raw materials, kitchen and bathroom accessories, home equipment and other supporting facilities. Each year, PTH conducts quality assessments of suppliers, resolutely rejects unqualified suppliers, and guarantees the quality of products from the source.

PRODUCTION :

PTH owns hundreds of fully automatic mechanized production lines, which ensures high production efficiency and timely delivery. In the manufacturing process, PTH can provide production progress reports to customers through pictures and video.

PTH has a professional quality inspection team which takes strict quality control in each process, and make sure defect product never be delivered to client.

TRANSPORTATION :

PTH, who has more than 20 years of international logistics experience. can provide customers with the best transportation routes, customs declaration, commodity inspection and other services, and truly realizes "door to door."



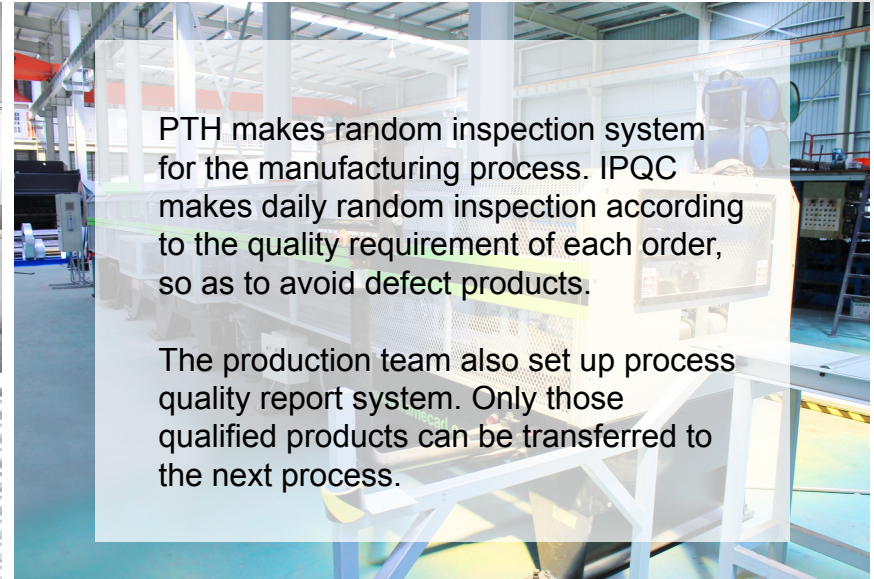
PRODUCTION VIEW



Quality is the life of a enterprise and the foundation of sustainable development. PTH strictly follows the ISO9000 quality system and make quality control in each process from material procurement to finish product delivery.

For the outsourcing raw material and accessories, it is reported to the ICQC team for inspection. ICQC will inspect according to “Raw Material Inspection Regulations”, make sure the material technical specs and quality meets GB standard, then upload the inspection record, QC document and test report to ERP system.

PRODUCTION VIEW



PTH makes random inspection system for the manufacturing process. IPQC makes daily random inspection according to the quality requirement of each order, so as to avoid defect products.

The production team also set up process quality report system. Only those qualified products can be transferred to the next process.



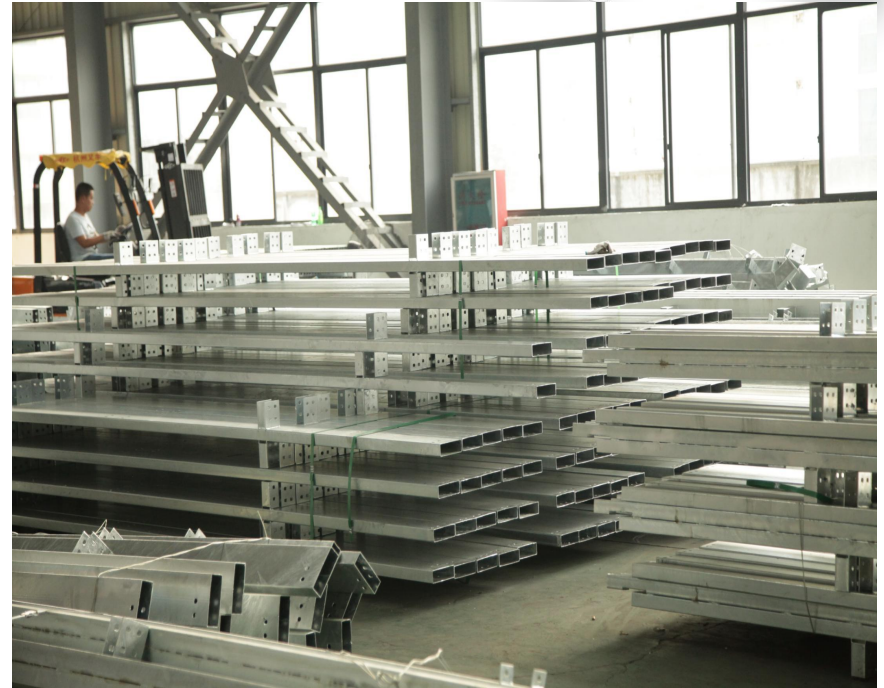
PACKAGE&LOADING



PTH makes the most reasonable package plan according to the structure characteristics and quality requirement. The modular package design of the spare part effectively reduce the package volume. The spare parts of each module is packed in a separate package, these small package modular combination ensures a easy transportation and installation, which in return makes the loading and unloading much easier, and greatly reduces labor cost.



PACKAGE&LOADING



INSTALLATION



PTH will provide complete and detailed installation drawings for the product. PTH has professional photography and post-production personnel who can provide installation videos for the product and intuitively demonstrate the installation steps and installation details of the product.

PTH owns on-site installation guidance experience for dozens of projects such as Mozambican light steel villa resorts, Chilean container camps, etc. It can provide EPC construction services and technical guidance according to the needs of customers to ensure the smooth and safe construction of the houses required by customers and realize real "Check-in".

PHOTOS



URL : www.pthouse.com / www.putianhouse.com
E-mail : inquiry@putianhouse.com

PHOTOS



CLIENT FEEDBACK



We use BIM system to manage and operate the whole project. For the maintenance, PTH provide online technical support or maintenance service on the site per client requirement.

It is the first school project that client cooperated with us, they are very satisfied with Putian's design and product quality. The project was completed in August 2019 and is now in use.



PHOTOS



URL : www.pthouse.com / www.putianhouse.com
E-mail : inquiry@putianhouse.com

PHOTOS



URL : www.pthhouse.com / www.putianhouse.com
E-mail : inquiry@putianhouse.com

PHOTOS



PHOTOS



URL : www.pthouse.com / www.putianhouse.com
E-mail : inquiry@putianhouse.com

PHOTOS



PHOTOS

