

**PTH**

# Resort Container House

1. Project No : PTM5C055
2. Date : year 2014
3. Location : Canada
4. Scale : 7 x20ft combined
5. Category : container house+pitched roof
6. Function : resort house
7. Characteristics : Special treatment for thermal insulation performance, suitable for extremely cold areas



# PROJECT DESIGN

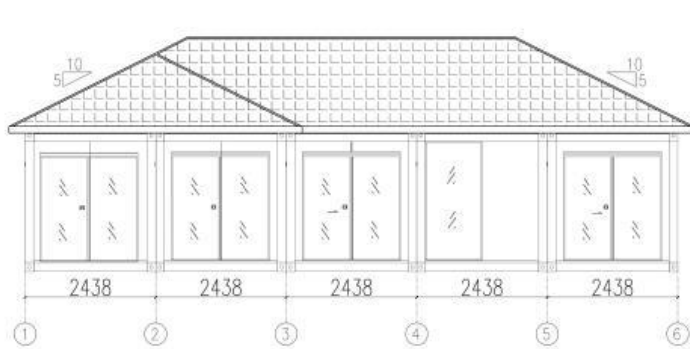


PTH owns 100+ architect and engineers at home and abroad, to provide customized design service for client with different requirements. We use the relevant information data of construction projects as the basis of the model to build the building model, and simulate the real information of the building through digital information simulation.

At present, we have finished the Revit research and development of company's products, laying a solid foundation to finish design effectively and accurately and also presenting details and three dimensional effects of our company's products to customers.

Project features: this project is a lake-view cottage built in Canada. The whole building is composed of 7 x20ft container house and multi-slope light steel roof. The container wall panel is 100mmPU sandwich panel, the exterior cladding is 27mmPU metal carved panel, the bottom and top of the container have PU insulation, and the wall contains large glass windows. It contains a kitchen, toilet, living room and 3 bedrooms. The materials and configuration of the entire house conform to Canadian standards, suitable for cold areas in Canada, and meet the local snow load and insulation requirements. The project was completed and used in 2014.

# DESIGN

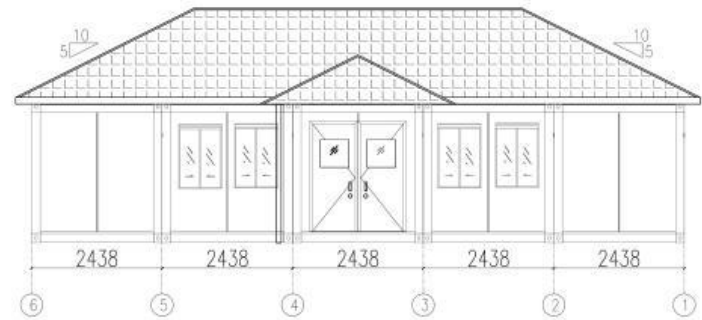


①

4.576

2.791

±0.00

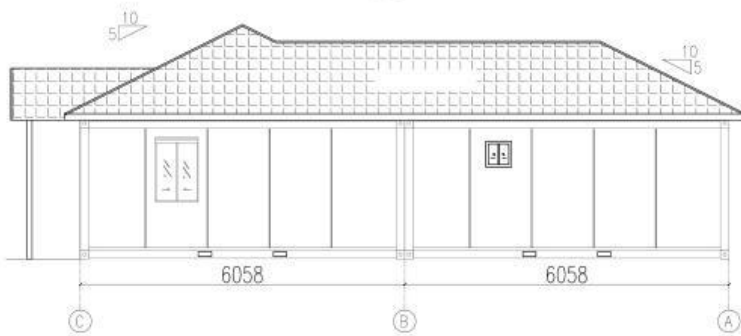


②

4.263

2.791

±0.00



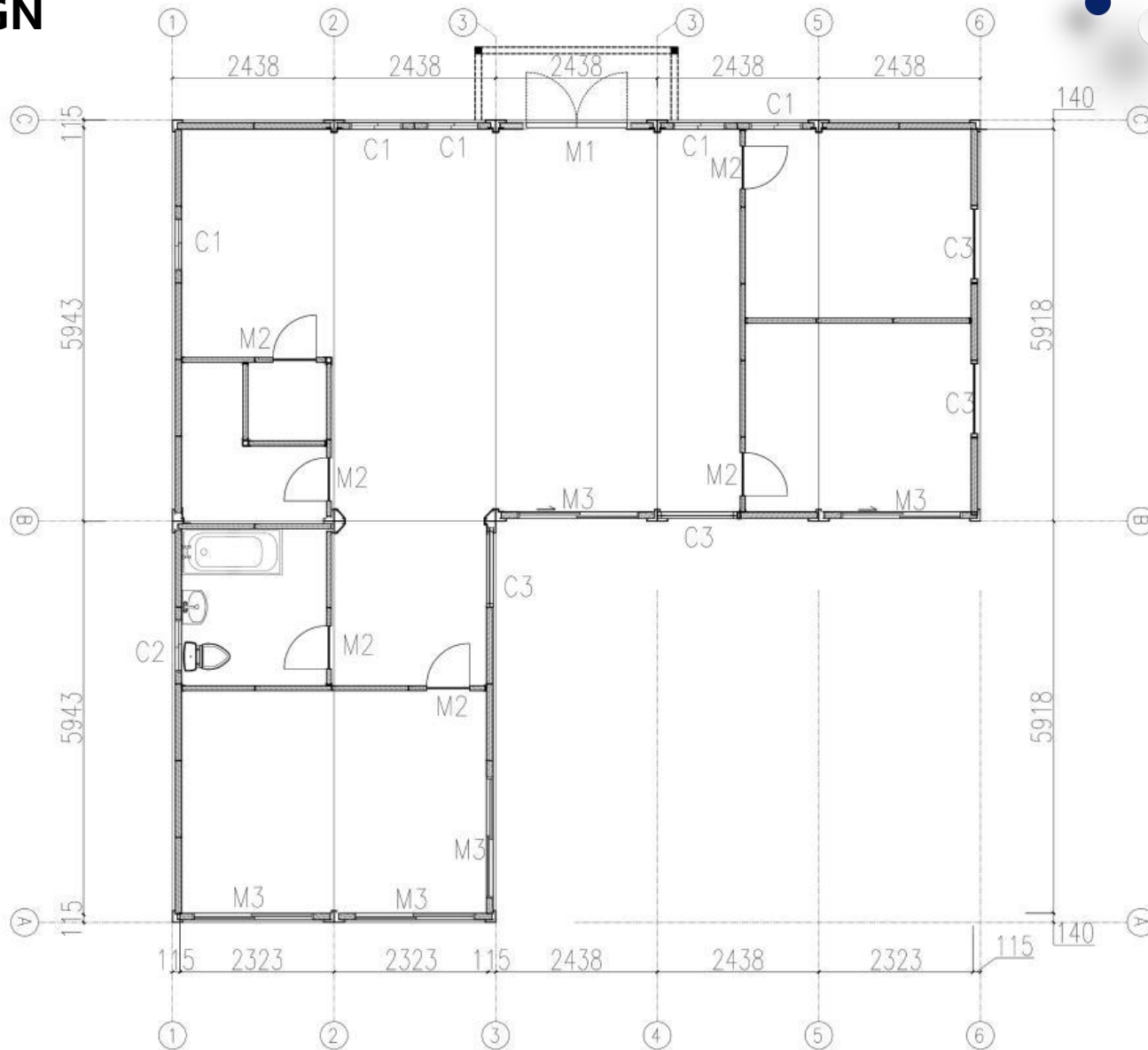
③



④

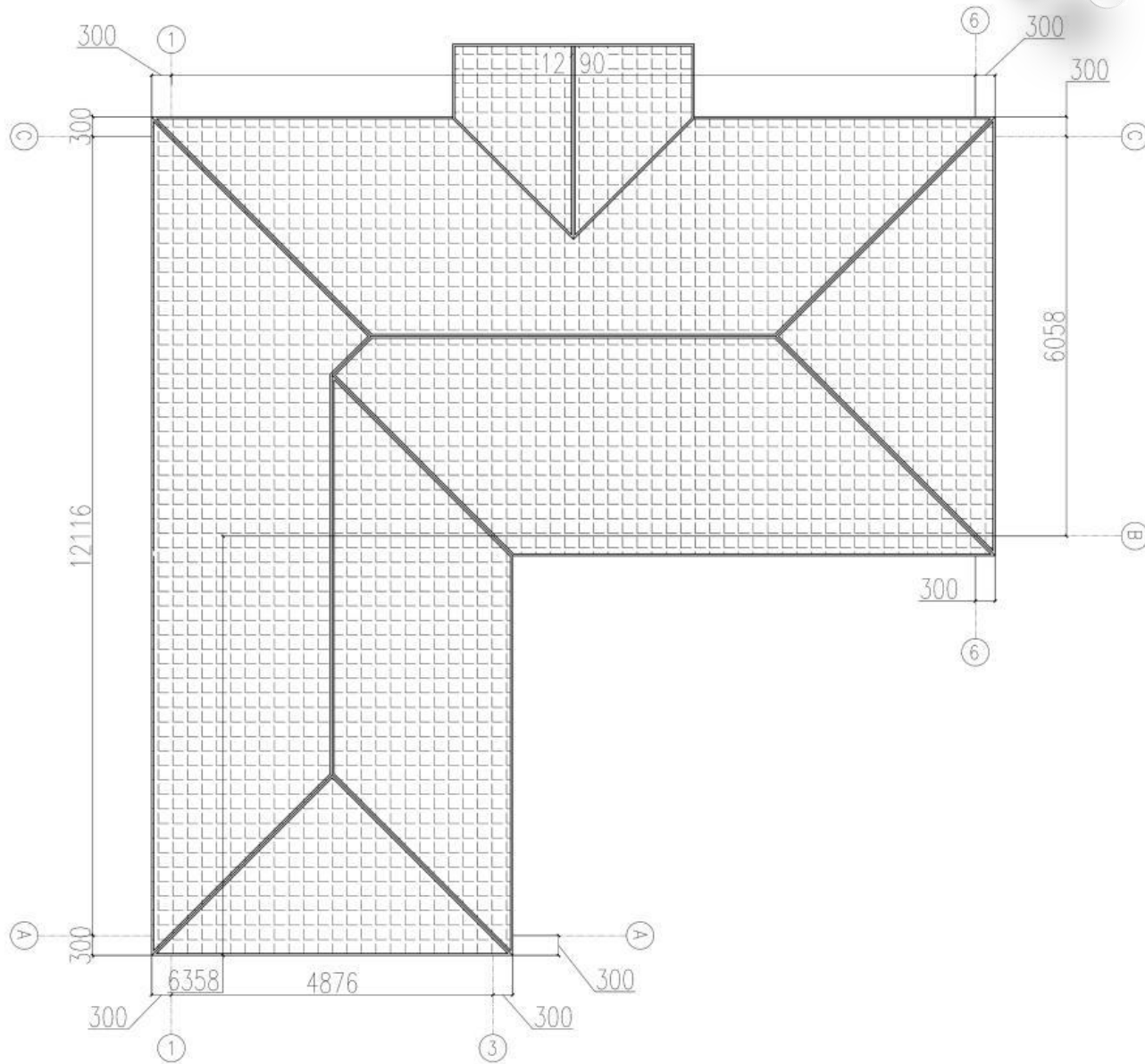
The preliminary design is made in accordance to client's requirement and local building code. After getting the permission by local authority, PTH will do the shop drawing for production.

# DESIGN





# DESIGN





# PRODUCTION AND DELIVERY



## PROCUREMENT :

PTH has a mature procurement supply chain, including product raw materials, kitchen and bathroom accessories, home equipment and other supporting facilities. Each year, PTH conducts quality assessments of suppliers, resolutely rejects unqualified suppliers, and guarantees the quality of products from the source.

## PRODUCTION :

PTH owns hundreds of fully automatic mechanized production lines, which ensures high production efficiency and timely delivery. In the manufacturing process, PTH can provide production progress reports to customers through pictures and video. PTH has a professional quality inspection team which takes strict quality control in each process, and make sure defect product never be delivered to client.

## TRANSPORTATION :

PTH, who has more than 20 years of international logistics experience. can provide customers with the best transportation routes, customs declaration, commodity inspection and other services, and truly realizes "door to door."





# PRODUCTION

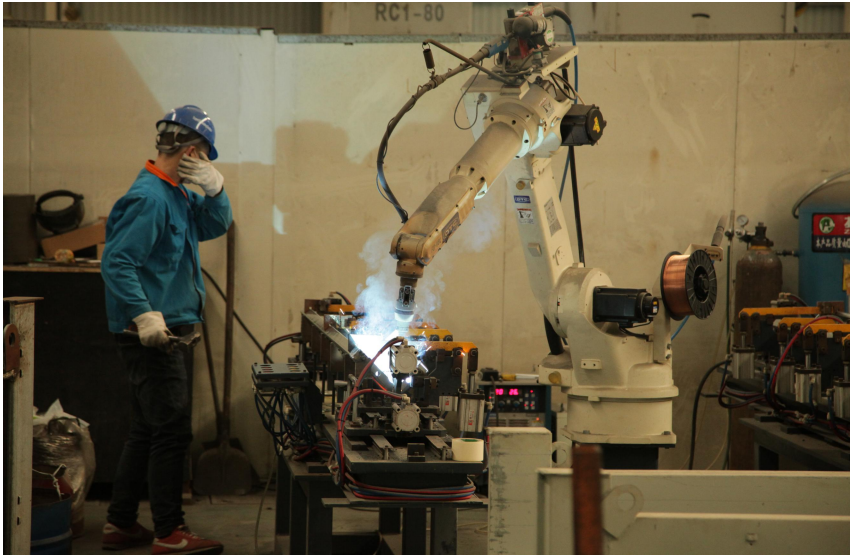


Quality is the life of a enterprise and the foundation of sustainable development. PTH strictly follows the ISO9000 quality system and make quality control in each process from material procurement to finish product delivery.

For the outsourcing raw material and accessories, it is reported to the ICQC team for inspection. ICQC will inspect according to “Raw Material Inspection Regulations”, make sure the material technical specs and quality meets GB standard, then upload the inspection record, QC document and test report to ERP system.



# PRODUCTION



PTH makes random inspection system for the manufacturing process. IPQC makes daily random inspection according to the quality requirement of each order, so as to avoid defect products.

The production team also set up process quality report system. Only those qualified products can be transferred to the next process.

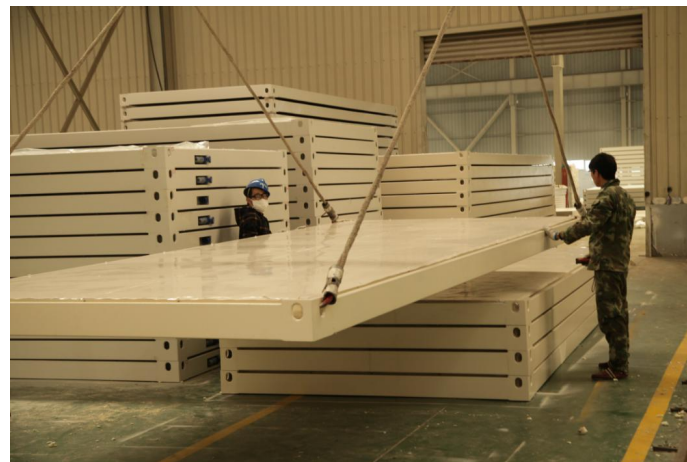




# PACKAGE&LOADING



PTH makes the most reasonable package plan according to the structure characteristics and quality requirement..The modular package design of the spare part effectively reduce the package volume. The spare parts of each module is packed in a separate package, these small package modular combination ensures a easy transportation and installation, which in return makes the loading and unloading much easier, and greatly reduces labor cost.



## CLIENT FEEDBACK



We use BIM system to manage and operate the whole project. For the maintenance, PTH provide online technical support or maintenance service on the site per client requirement.

The design, functionality and practicality meet the basic needs of customers, and the comfort of living is also very high. This house is very popular in the local area.

**URL : [www.pthhouse.com](http://www.pthhouse.com) / [www.putianhouse.com](http://www.putianhouse.com)**  
**E-mail : [inquiry@putianhouse.com](mailto:inquiry@putianhouse.com)**



**PHOTOS**



**URL : [www.pthhouse.com](http://www.pthhouse.com) / [www.putianhouse.com](http://www.putianhouse.com)  
E-mail : [inquiry@putianhouse.com](mailto:inquiry@putianhouse.com)**



**PHOTOS**

