

PTH

Food warehouse-Nicaragua

1. Project No. : PT170482

3. Location : Nicaragua

5. Structure : steel structure

7. Characteristics: As a food warehouse, the waterproofing and airtightness are very important factors in design.

2. Project time : 2017年

4. Area : 3744m²

6. Usage : food warehouse



Design



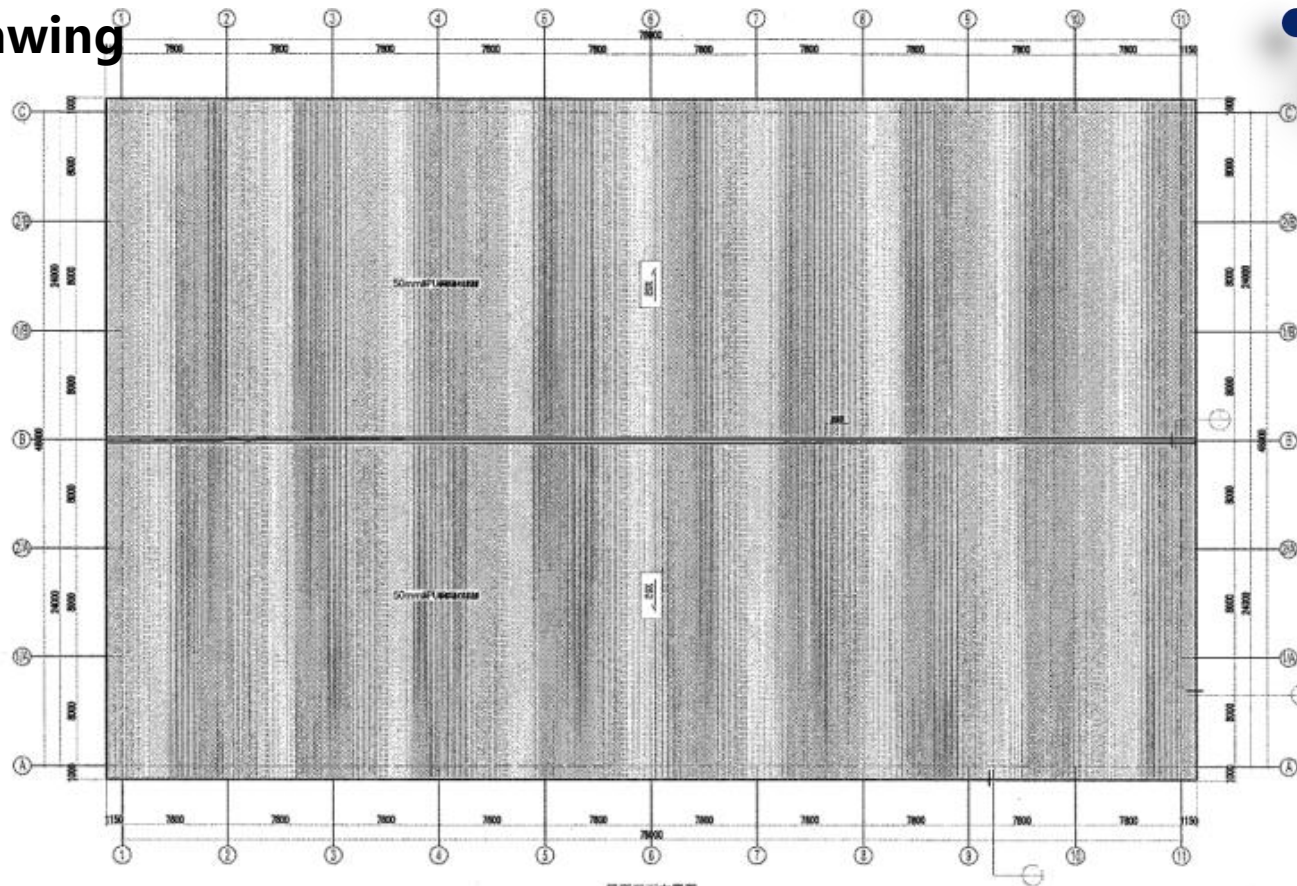
PTH has more than 100 R&D technical engineers, providing customized design services. Using the relevant information data of the construction project as the basis of the model, the building model is established, and the real information of the building is simulated through digital information simulation. At present, we have completed the research and development of the Revit family library of various products of the company, which makes our design efficiently, and at the same time can fully show the detailed nodes and 3D view of to customers.

Project Features:

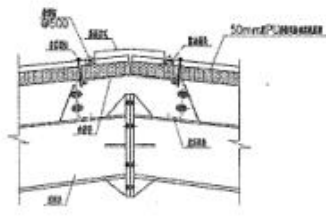
This project is located in Nicaragua. 78 meters in length and 48 meters in width. The construction area is 3744 square meters, a single-layer portal frame structure. The project is a food warehouse. The customer paid great attention to the thermal insulation performance in the design process, so the customer chose PU sandwich panel as the roofing panel.

We pay great attention to the design of waterproof performance in the process of making flooding. We have made special treatments for the edging of the building. The design of the flooded edging has taken into account water resistance and airtightness as much as possible.

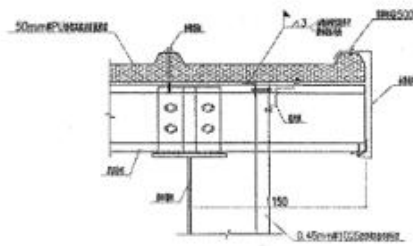
Drawing



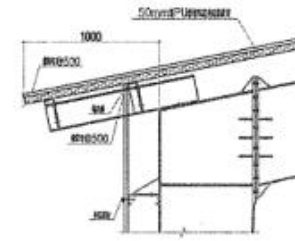
屋顶平面布置图



屋面檐条、屋面板、屋脊包边连接大样



屋面檩条与山墙角钢、包边连接大样

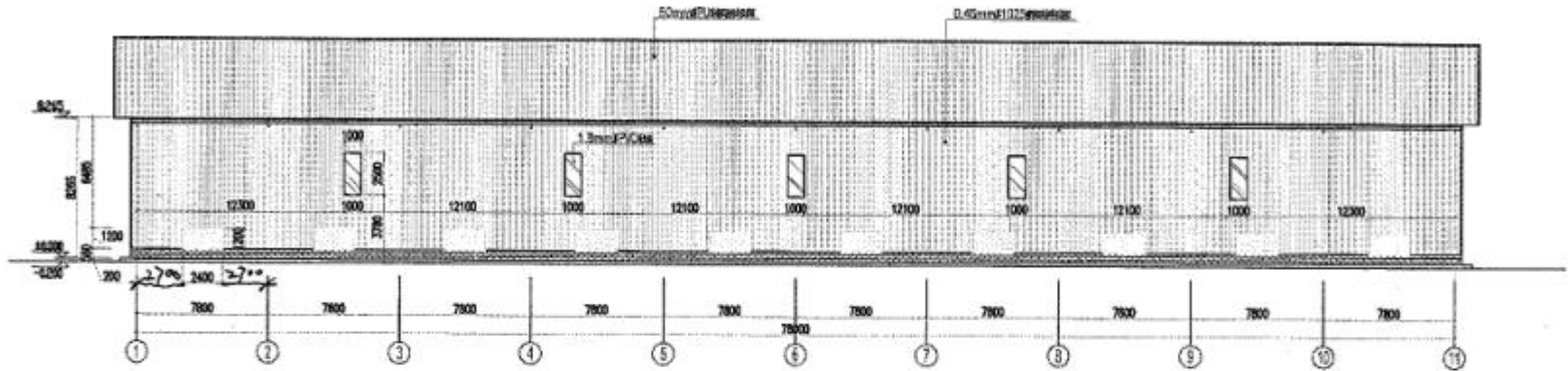


檐沟、屋面板、墙面板连接大样

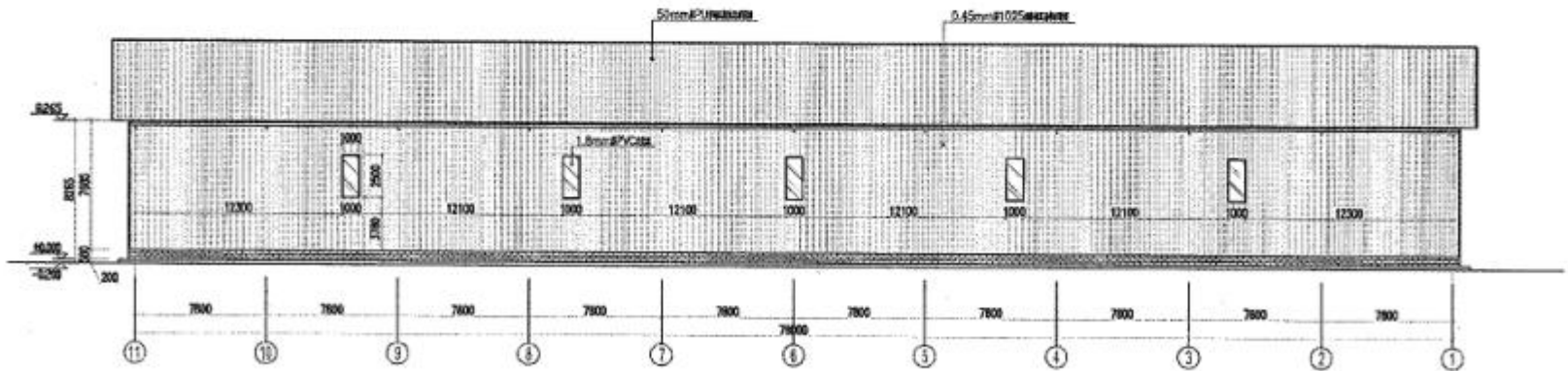


PTH's design drawings are designed according to customer needs and local building codes. After obtaining the local government's permission, they can finally continue to deepen the design.

Drawing

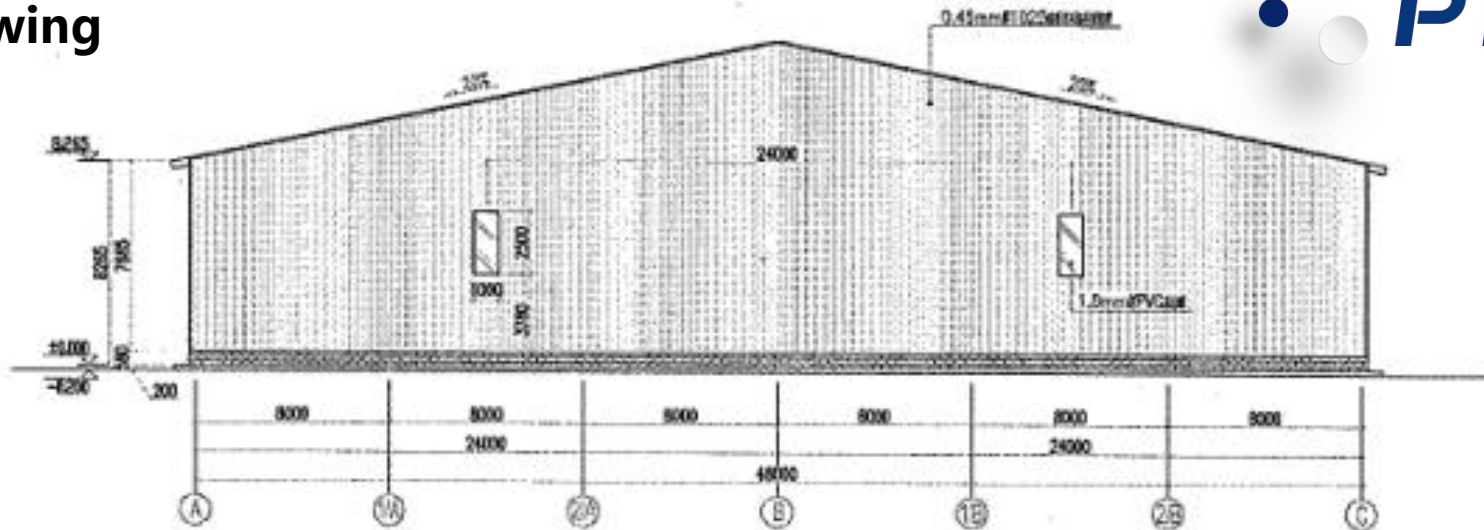


东立面图

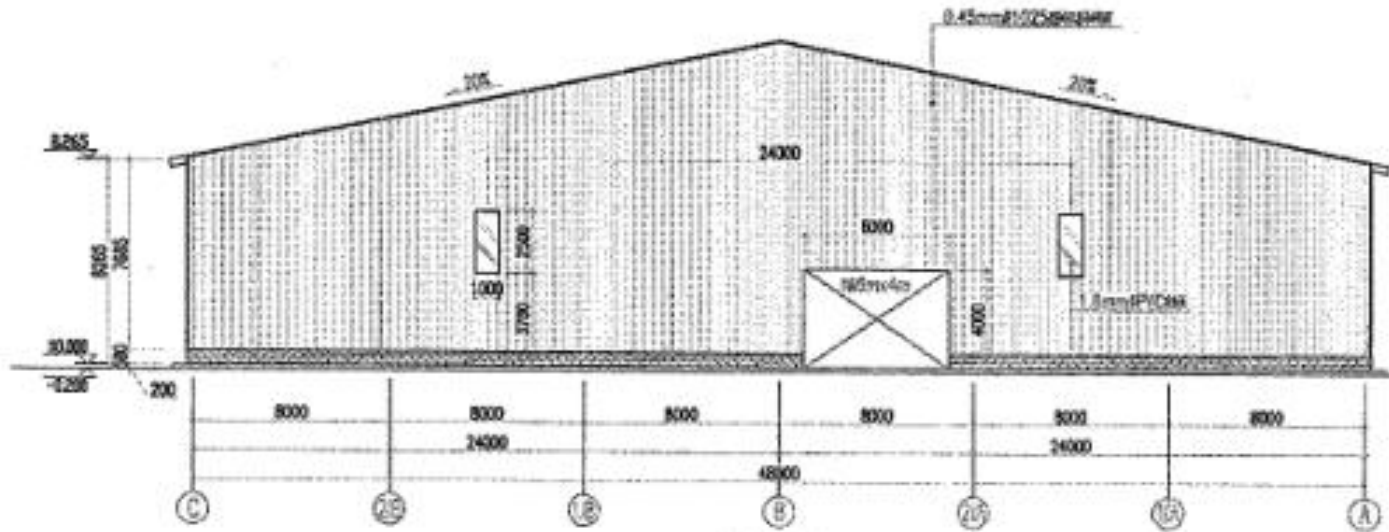


西立面图

Drawing



北立面图



南立面图

Production & Delivery



purchase:

PTH has a mature supply chain, includes raw materials, kitchen, bathroom accessories, household equipment and other facilities. PTH conducts quality assessment of suppliers every year, and rejects unqualified suppliers firmly to ensure the quality of goods.

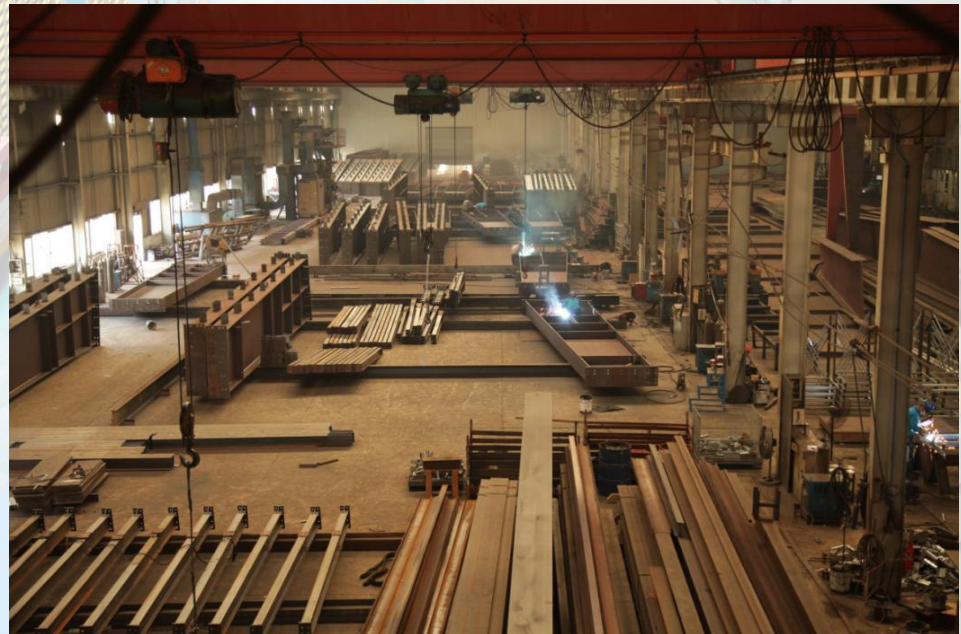
produce:

PTH has hundreds of fully automatic production lines, which can be combined with efficient production arrangements to provide a strong guarantee for timely delivery of orders.

PTH has a professional quality inspection team. Every product process will undergo strict quality inspection, and products that do not meet the quality standards will never be shipped.

transport:

PTH has more than 10 years of international logistics experience, we can provide transportation routes, customs declarations, commodity inspections and other services, truly "door-to-door" products.



Production view

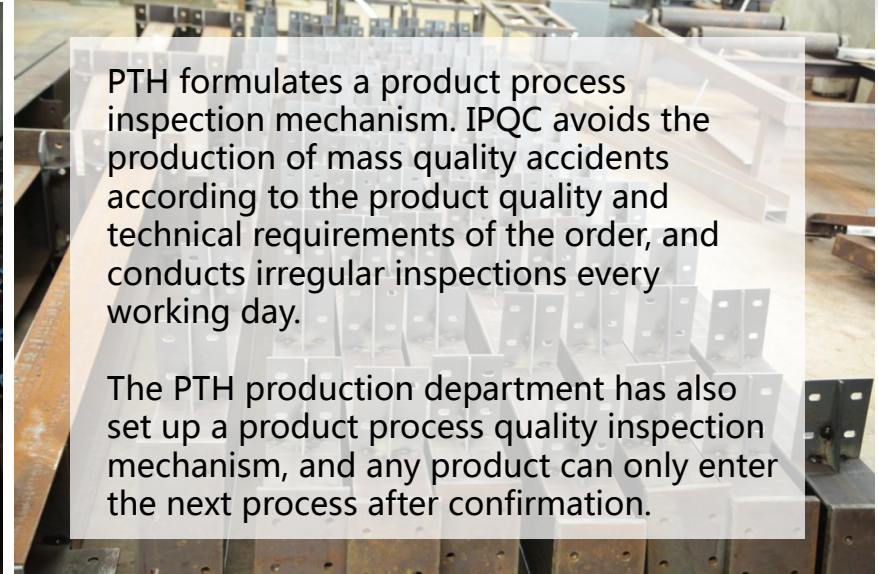
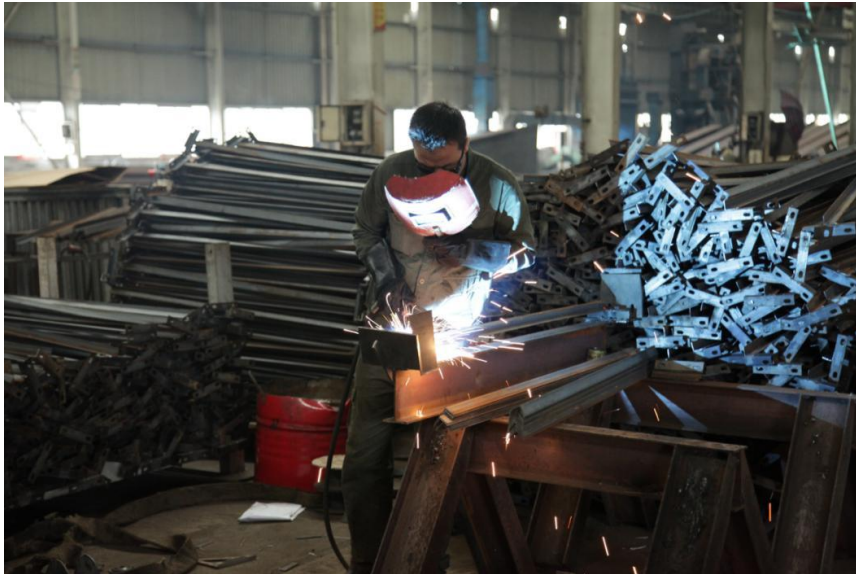


Quality is the core value and the foundation of the company's continuous development. PTH follows the ISO9000 quality system. From the beginning of raw material procurement, every link is strictly controlled.

After purchasing and supplying from the procurement department, the raw and auxiliary materials and outsourced products need to be inspected. ICQC conducts inspections according to the "Original and auxiliary material inspection standards" and confirms that the technical quality/information of the materials meets the requirements of the design specification GB. Upload quality documents and experiment reports to the ERP system.



Production view



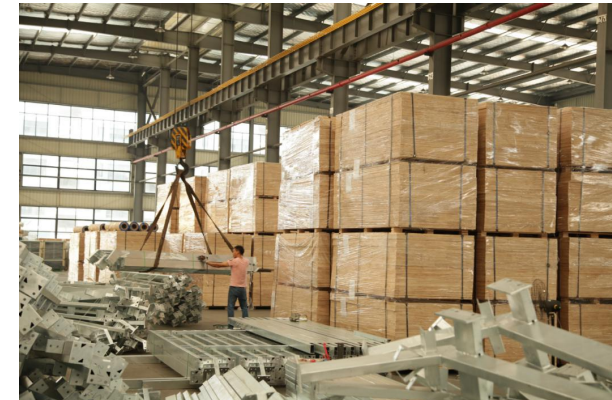
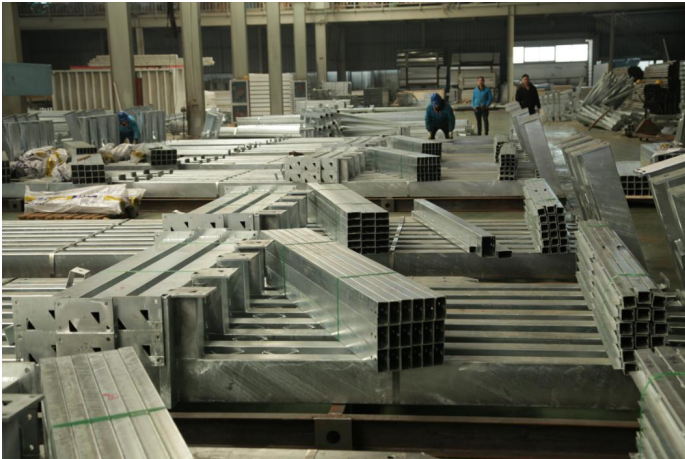
PTH formulates a product process inspection mechanism. IPQC avoids the production of mass quality accidents according to the product quality and technical requirements of the order, and conducts irregular inspections every working day.

The PTH production department has also set up a product process quality inspection mechanism, and any product can only enter the next process after confirmation.



Packing & Loading

PTH provide suitable solutions based on product structure characteristics/customer quality requirements. The steel structure parts are loaded by 11 pieces of 40HQ containers. To avoid damage during transportation, PTH adopts the unitized design of parts when packing, which effectively reduces the volume. The components are in independent small packages, so that it is easy to transport and install and save labor cost for client.



Packing & Loading



Installation



PTH will provide complete and detailed installation drawings for the products. Our professional team can provide installation video for the product, intuitively display the installation steps and installation details of the product.

PTH has on-site installation guidance experience for dozens of projects such as Mozambique Light Steel Villa Resort, Chile Container Camp, etc. It can provide EPC construction services and technical guidance according to customer needs to ensure the smooth and safe construction of projects.



Site view



Site view



Site view



**URL : www.pthouse.com / www.putianhouse.com
E-mail : inquiry@putianhouse.com**

Feedback from client



We use the BIM system to manage and operate the entire project. PTH can provide telephone consultation and guidance according to customer needs after installed, we can also provide on-site maintenance and repair services according to customer needs.

This is the first order of this new customer. The success of the project has also been recognized by the customer, now keeping a long term business with us.

