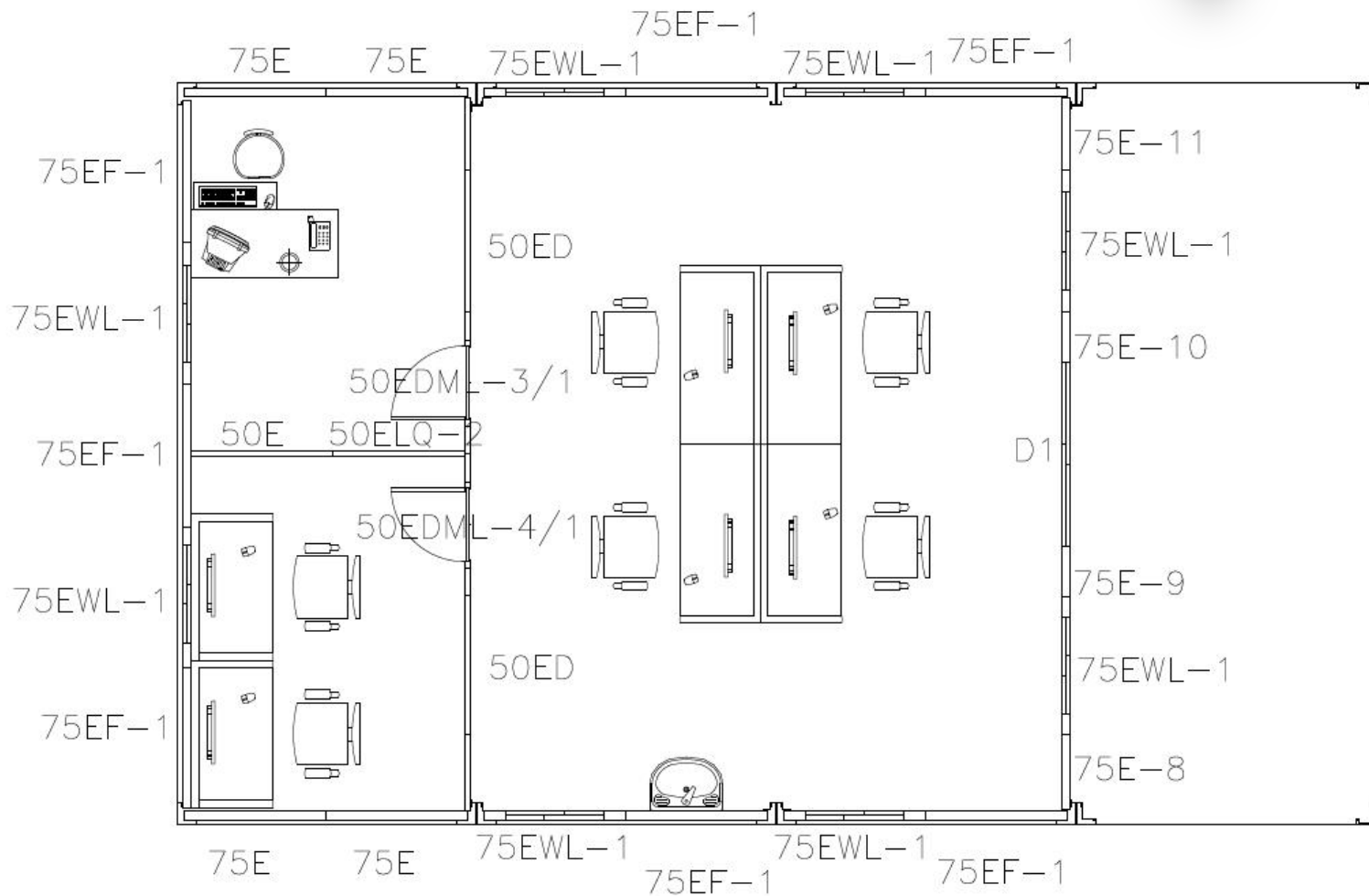


PTH

CONTAINER HOUSE OFFICE PROJECT IN FRENCH GUYANA

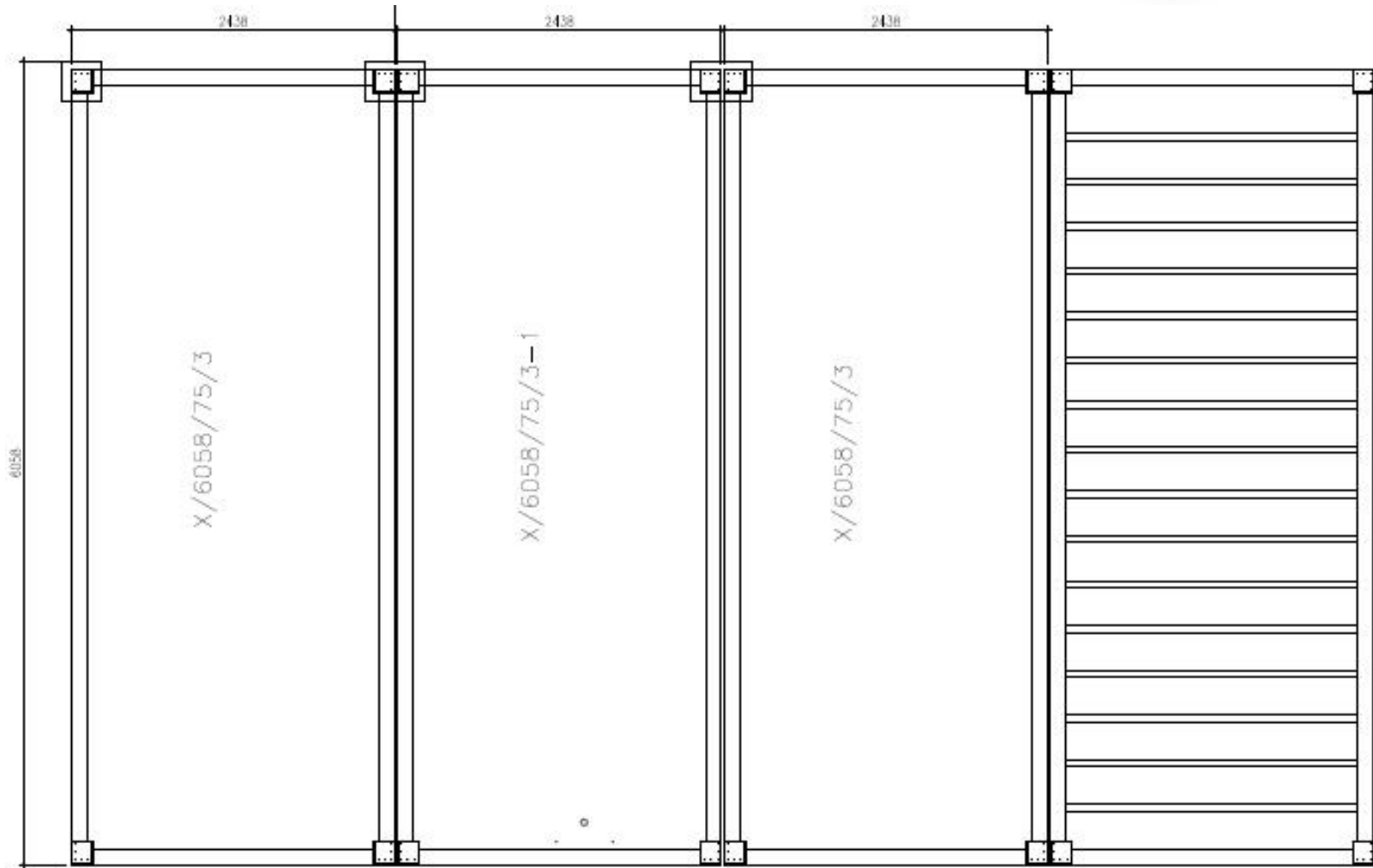
1. PO No. : PT170437
2. Time : 2017
3. Location : French Guyana
4. Scale : 4 units
5. Category : container house
6. Purpose : Office
7. Features : 4 units
8*20ft container house combined, including one unit for balcony.





The preliminary design is made in accordance with client' s requirement and local building code. After getting the permission by local authority, PTH will do the shop drawing for production.

DESIGN



PRODUCTION



PROCUREMENT :

PTH has a mature procurement supply chain, including product raw materials, kitchen and bathroom accessories, home equipment and other supporting facilities. Each year, PTH conducts quality assessments of suppliers, resolutely rejects unqualified suppliers, and guarantees the quality of products from the source.

PRODUCTION :

PTH owns hundreds of fully automatic mechanized production line, which ensures high production efficiency and timely delivery. In the manufacturing process, PTH can provide production progress reports to customers through pictures and video. PTH has a professional quality inspection team which takes strict quality control in each process, and make sure defect product never be delivered to client.

TRANSPORTATION :

PTH, who has more than 20 years of international logistics experience. can provide customers with the best transportation routes, customs declaration, commodity inspection and other services, and truly realizes "door to door."



PRODUCTION



Quality is the essence of a enterprise and the foundation of sustainable development. PTH strictly follows the ISO9000 quality system and make quality control in each process from material procurement to finish product delivery.

For the outsourcing raw material and accessories, it is reported to the ICQC team for inspection. ICQC will inspect according to "Raw Material Inspection Regulations" , make sure the material technical specs and quality meets GB standard, then upload the inspection record, QC document and test report to ERP system.

PRODUCTION



PTH makes random inspection system for the manufacturing process. IPQC makes daily random inspection according to the quality requirement of each order, so as to avoid defect products.

The production team also set up process quality report system. Only those qualified products can be transferred to the next process.



PACKING & LOADING

PTH makes the most reasonable package plan according to the structure characteristics and quality requirement. PTH design a unique packing method of container houses, and each package is fixed and protected from other packages to avoid damage during transportation.



INSTALLATION



URL : www.pthhouse.com / www.putianhouse.com
E-mail : inquiry@putianhouse.com

INSTALLATION



URL : www.pthhouse.com / www.putianhouse.com
E-mail : inquiry@putianhouse.com

INSTALLATION



URL : www.pthhouse.com / www.putianhouse.com
E-mail : inquiry@putianhouse.com

INSTALLATION



INSTALLATION



CLIENT' S FEEDBACK



URL : www.pthhouse.com / www.putianhouse.com
E-mail : inquiry@putianhouse.com

FEEDBACK

