

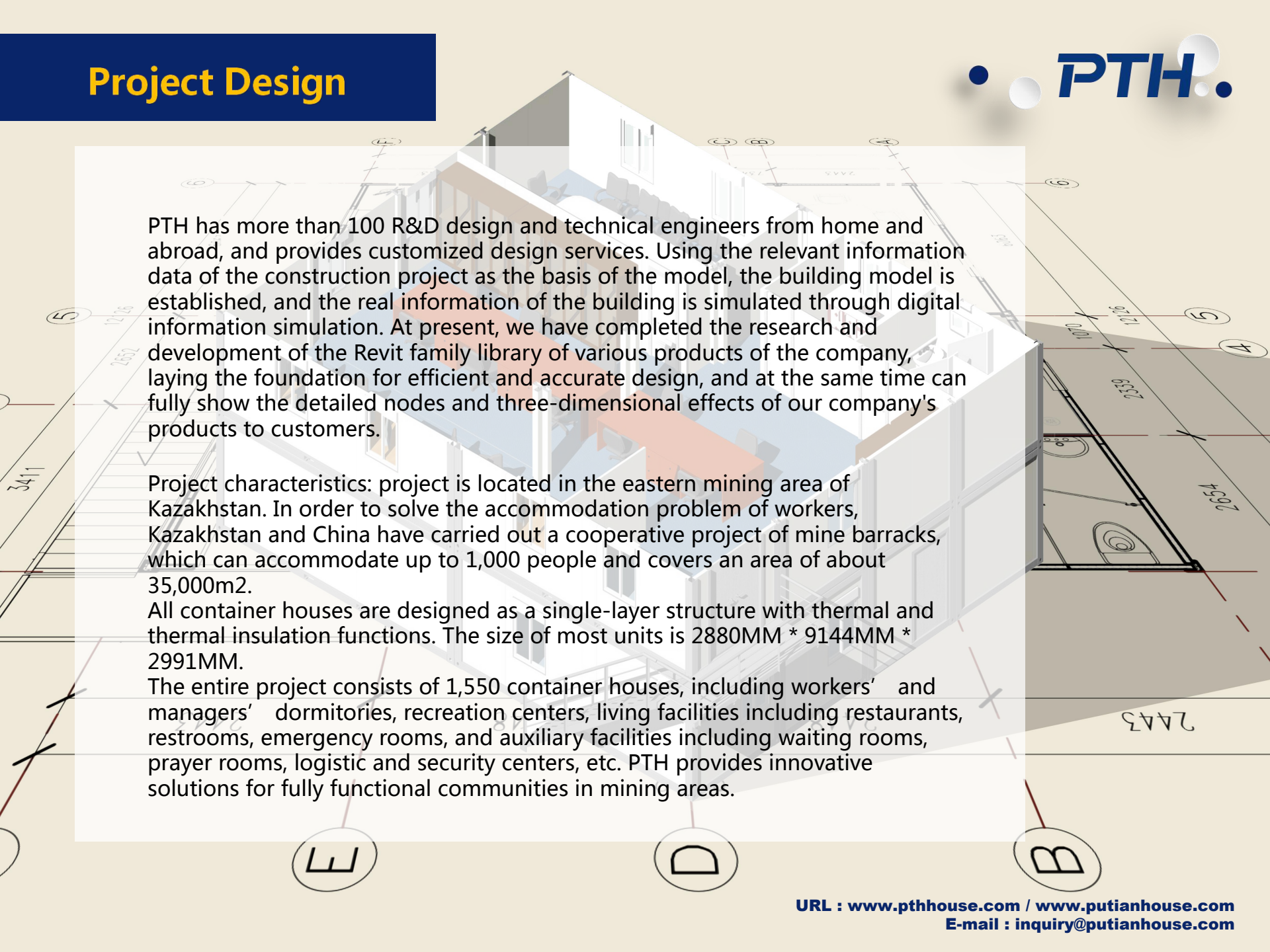
PTH

Kazakhstan container camp

- 1. Project time:** 2015.4-2015.12
- 2. Project site:** Kazakhstan
- 3. Project scale:** covers an area of about 35,000m², 1550 units container houses
- 4. Product type:** Container
- 5. Usage:** mining camp
- 6. Project features:** Fully functional mining camps provide innovative solutions, and the materials meet the civil building standards for thermal insulation and fire protection under severe cold conditions



Project Design

A 3D architectural rendering of a building structure, likely a mine barracks, shown in a cutaway view. The building is composed of multiple units, possibly container houses, arranged in a long row. The rendering is overlaid with a grid system consisting of letters A, B, C, D, E and numbers 4, 5, 6. Dimensions are indicated with lines and numbers, such as 3411, 2657, 12126, 1070, 6332, 45392, and 2443. The building has a white exterior and a brown roof. The interior shows a living area with a table and chairs. The rendering is semi-transparent, allowing the grid and dimensions to be seen through the building.

PTH has more than 100 R&D design and technical engineers from home and abroad, and provides customized design services. Using the relevant information data of the construction project as the basis of the model, the building model is established, and the real information of the building is simulated through digital information simulation. At present, we have completed the research and development of the Revit family library of various products of the company, laying the foundation for efficient and accurate design, and at the same time can fully show the detailed nodes and three-dimensional effects of our company's products to customers.

Project characteristics: project is located in the eastern mining area of Kazakhstan. In order to solve the accommodation problem of workers, Kazakhstan and China have carried out a cooperative project of mine barracks, which can accommodate up to 1,000 people and covers an area of about 35,000m².

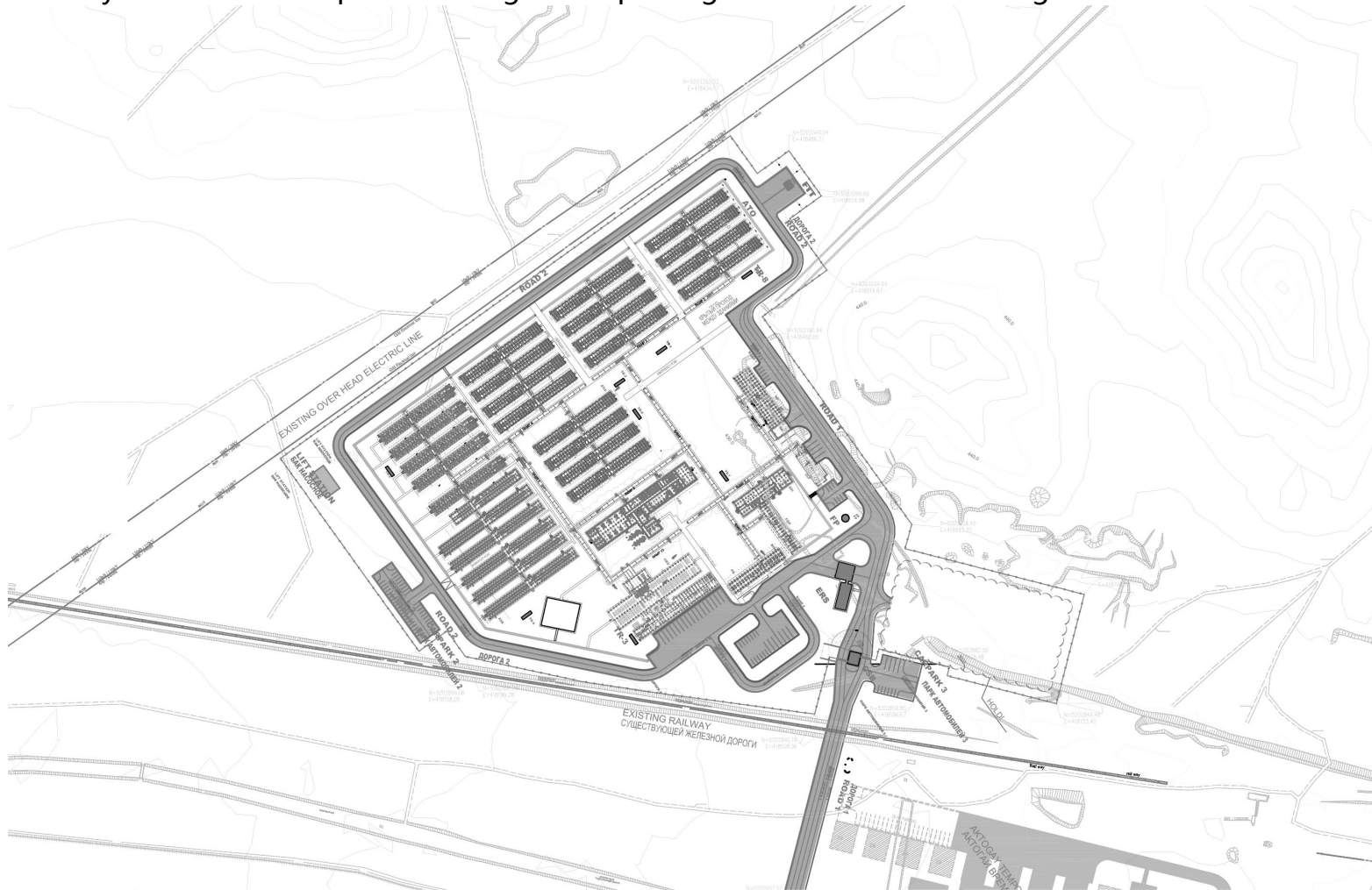
All container houses are designed as a single-layer structure with thermal and thermal insulation functions. The size of most units is 2880MM * 9144MM * 2991MM.

The entire project consists of 1,550 container houses, including workers' and managers' dormitories, recreation centers, living facilities including restaurants, restrooms, emergency rooms, and auxiliary facilities including waiting rooms, prayer rooms, logistic and security centers, etc. PTH provides innovative solutions for fully functional communities in mining areas.

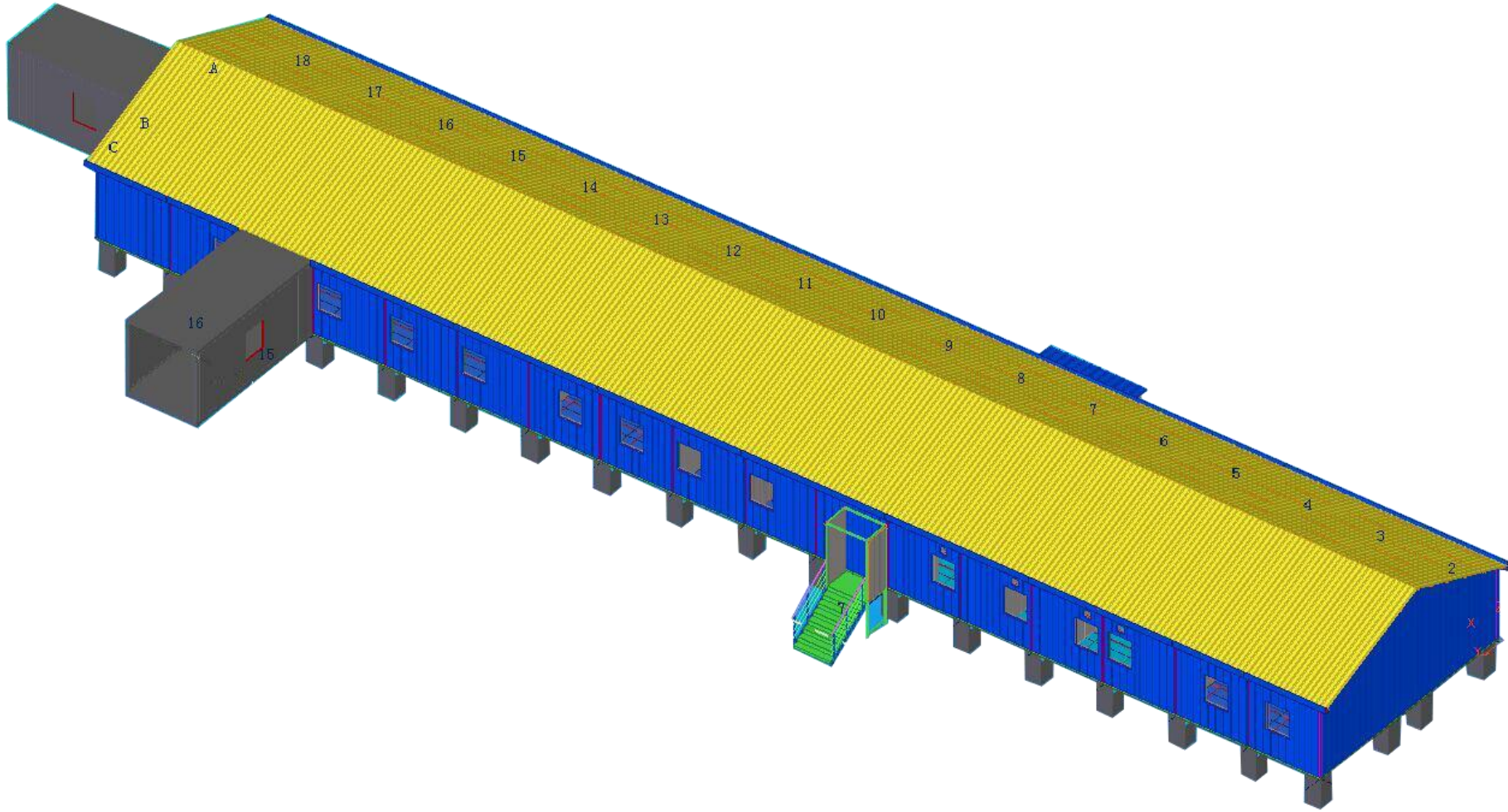
Design



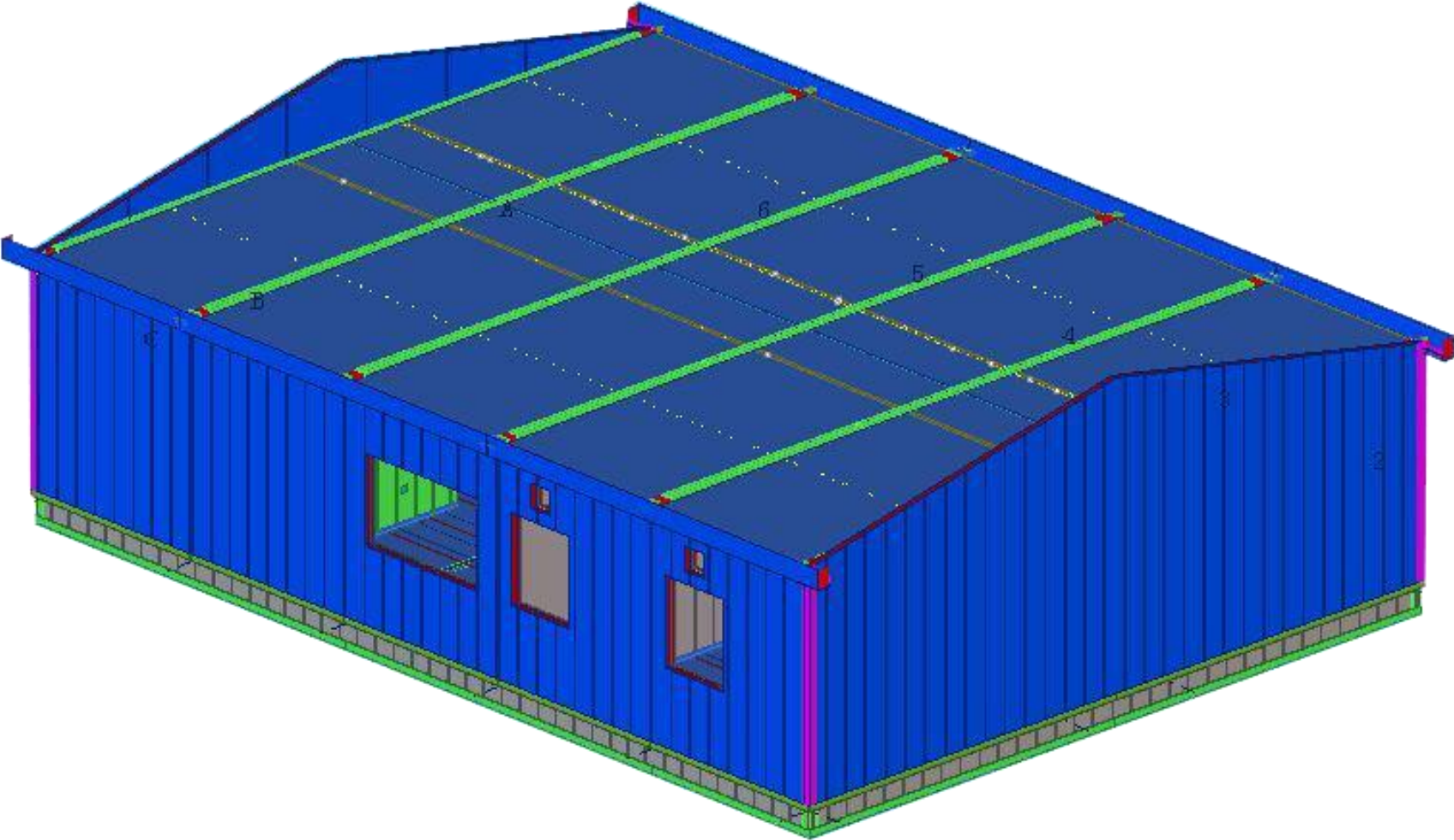
The design drawings of PTH are designed according to the needs of customers and local building codes. After obtaining the permission of the local government, they can finally continue to deepen the design after passing the review of the local government.



Design



Design



Production delivery



purchase

PTH has a mature procurement supply chain, including product raw materials, kitchen and bathroom accessories, household equipment and other supporting facilities.

produce:

PTH has hundreds of fully automated mechanized production lines, which can be combined with efficient production arrangements to provide a strong guarantee for timely delivery of customer orders.

transport:

PTH has more than 10 years of international logistics experience, and can provide customers with the best transportation routes, customs declaration, commodity inspection and other services.



Project production scenarios

PTH follows the ISO9000 quality system document framework, and manages and controls the products. From the beginning of raw material procurement, we strictly control and control.

The original and auxiliary materials and outsourced products need to be inspected. ICQC conducts inspection according to the "original and auxiliary material inspection standards" and confirms that the material quality/information meets the requirements of the design specifications. ICQC uploads the material inspection records, quality documents, and experimental reports to the ERP system.

Project production scenarios



PTH formulates a product inspection mechanism. IPQC avoids the occurrence of batch quality accidents according to the technical requirements of the ordered products, and conducts irregular inspections every working day. The PTH production department has also set up a product process quality inspection mechanism.



Packing and loading



PTH designs reasonable packaging solutions based on product characteristics/customer requirements. Each unit component adopts independent small packaging, which is convenient for transportation and installation. At the same time, it is easy to load and unload, which reduces the labor cost.



Project Installation



PTH will provide complete and detailed installation drawings for the products. We have professional photography and post personnel, can provide installation video for the product, intuitively display the installation steps and installation details of the product.

PTH has on-site installation guidance experience for dozens of projects such as Mozambique Light Steel Villa Resort and Chile Container Camp. It can provide EPC construction services and technical guidance according to customer needs to ensure the smooth and safe construction of the houses required by customers.

Since all container houses are assembled on site into easy-to-install panels, the entire frame can be delivered to the site, and then simply fixed on the site, thereby saving a lot of time on the project.



Project installation



Project installation



Project installation



Project installation



URL : www.pthhouse.com / www.putianhouse.com
E-mail : inquiry@putianhouse.com

Project installation



Project installation



URL : www.pthhouse.com / www.putianhouse.com
E-mail : inquiry@putianhouse.com

Project installation



URL : www.pthhouse.com / www.putianhouse.com
E-mail : inquiry@putianhouse.com

Customer feedback



We use the BIM system to manage and operate the entire project. For the later maintenance of the completed project, PTH can provide remote telephone consultation and guidance according to customer needs, or can provide on-site maintenance and repair services according to customer needs.

The container camp project in Kazakhstan provides better living conditions for local mining workers and managers. PTH's one-stop solution, including project design, project deepening, prefabricated production, and construction services, has been highly praised by customers.

Project site photos



Project site photos



Project site photos



URL : www.pthhouse.com / www.putianhouse.com
E-mail : inquiry@putianhouse.com

Project site photos



Project site photos



Project site photos



Project site photos



URL : www.pthouse.com / www.putianhouse.com
E-mail : inquiry@putianhouse.com

Project site photos



Project site photos



Project site photos

