

PTH

Light Steel Resort Hotel in Mozambique

1. Project No.: PT130465
2. Date: Year 2013—2014
3. Location: Mozambique
4. Scale: 8000sqm
5. Category: light steel villa
6. Function: resort hotel
7. Characteristics :
Mozambique's largest boutique resort, a classic case of one-stop delivery.



DESIGN



PTH owns 100+ architect and engineers at home and abroad, to provide customized design service for client with different requirements. We use the relevant information data of construction projects as the basis of the model to build the building model, and simulate the real information of the building through digital information simulation.

Project features: In year 2013, PTH was chosen as main contractor to build the largest scale resort hotels located in Mozambique. The project covers an area of 8,000 square meters, with total value of USD 840,000.

Due to economic condition, in Mozambique, there are only a few hotels, not to mention boutique hotels in resort areas, so it is difficult to satisfy the tourists' accommodation need. The boutique hotel project carried out by PTH has filled up the blank of local resort hotel market.

As one of the biggest turn-key solution projects, PTH offered professional solutions that based on the needs of clients. The whole project are carried out with heart and soul, including design, deep engineering, fabrication, and final construction.

DESIGN

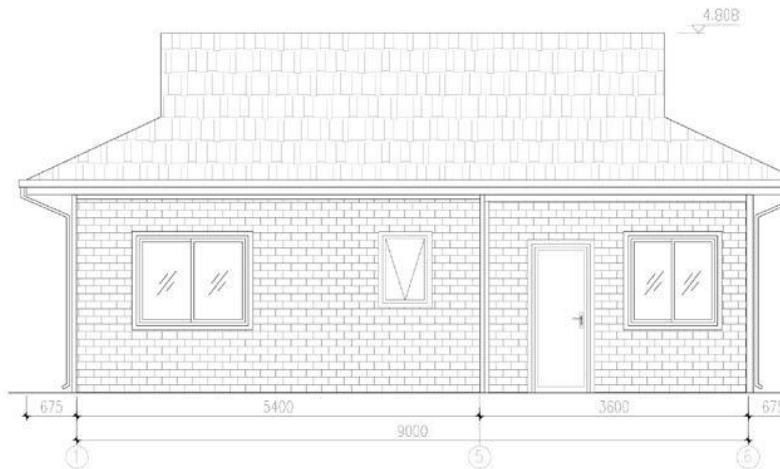


The preliminary design is made in accordance to client' s requirement and local building code. After getting the permission by local authority, PTH will do the shop drawing for production.

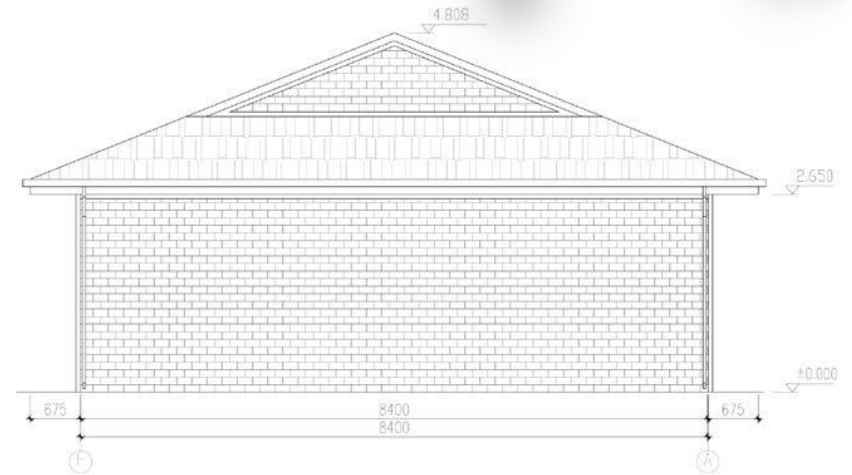
This resort hotel project includes 50 one-storey villas. Each villa is 89 sqm, which is divided into 4 functional areas – 2 bedrooms, 1 bathroom, 1 living room. The house is equipped with air conditioner and all bathroom fittings. For public areas in the hotel, there are entertainment facilities, such as bars, indoor and outdoor air pools, etc.



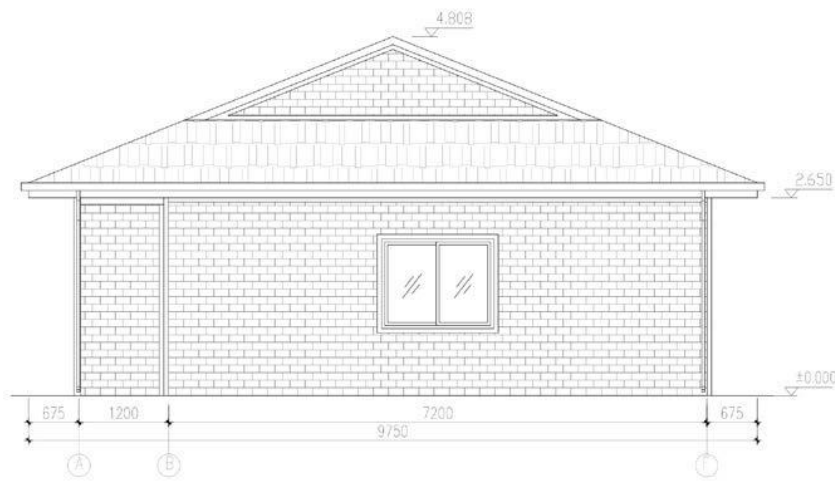
DESIGN



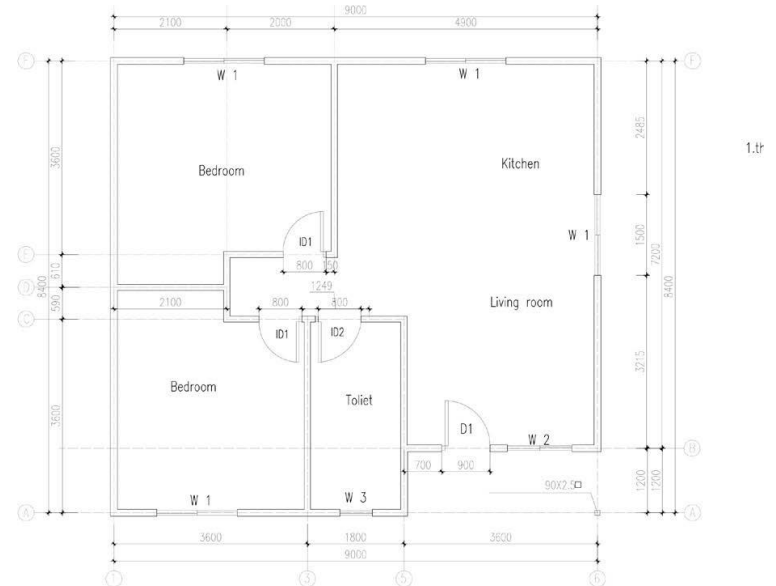
Elevation of A axis 1:100



Elevation of 1 axis 1:100



Elevation of 6 axis 1:100

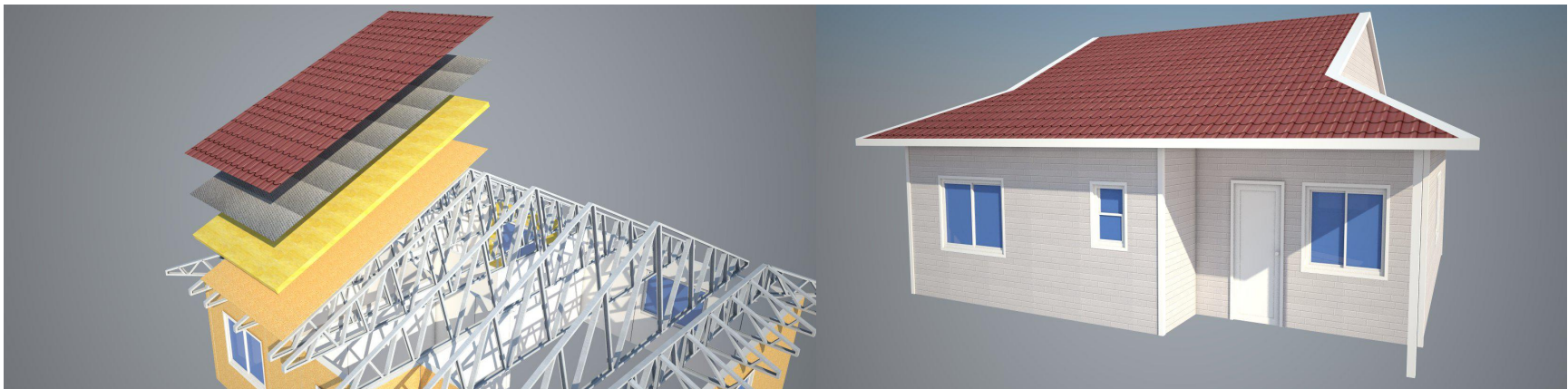
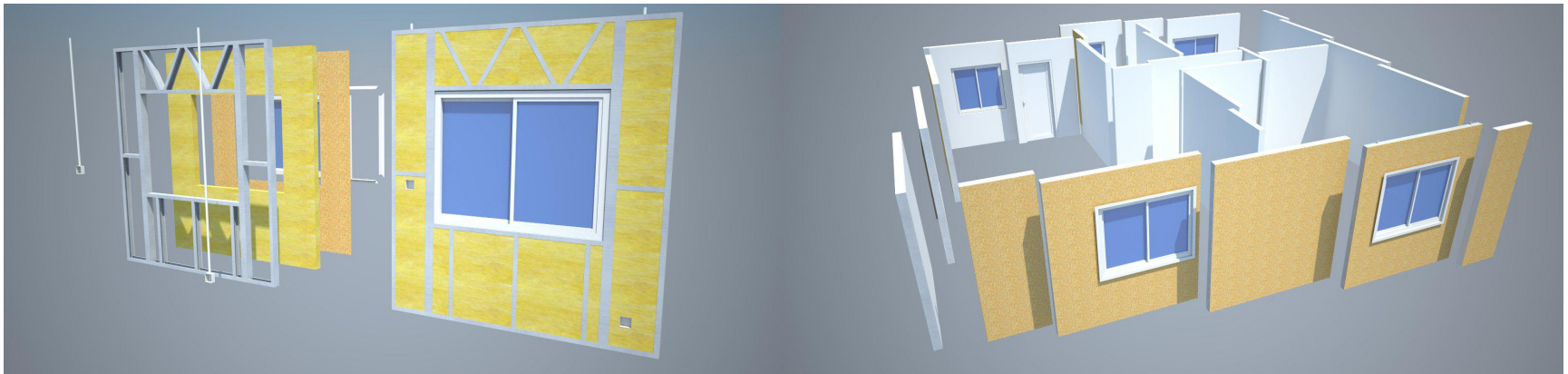


DESIGN

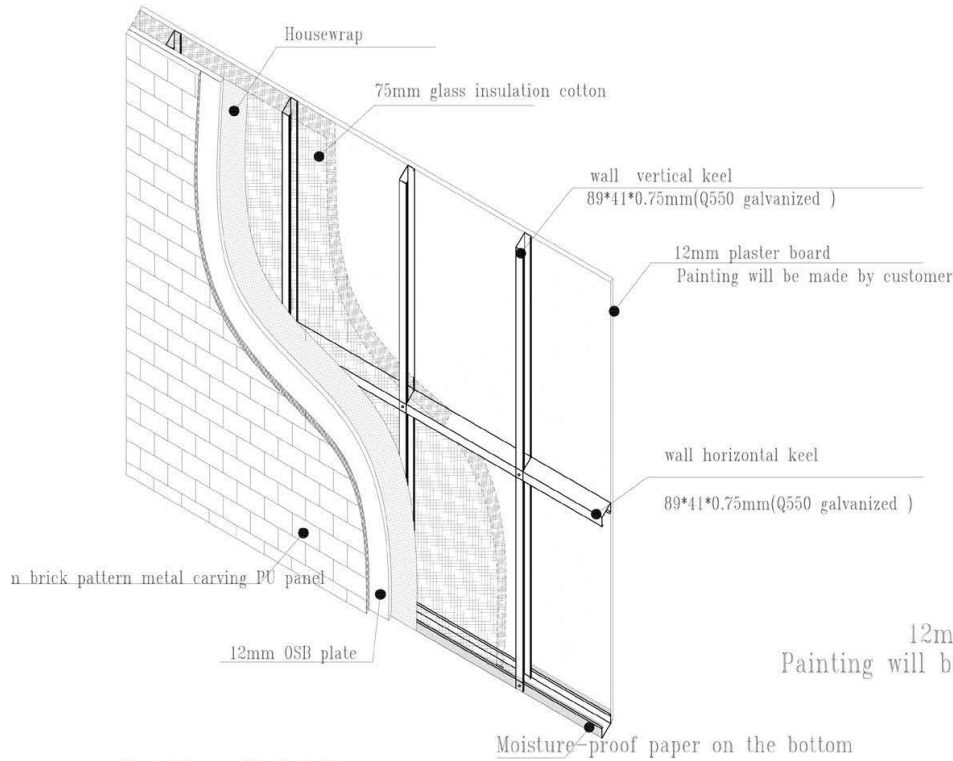


As to the construction material part : Framing system contains: moisture proofing and thermal insulation roof, the material layers from outside to inside are asphalt shingle, housewrap, OSB board, fiber glass, foil film, adhesive tape, stud, gypsum board ceiling.

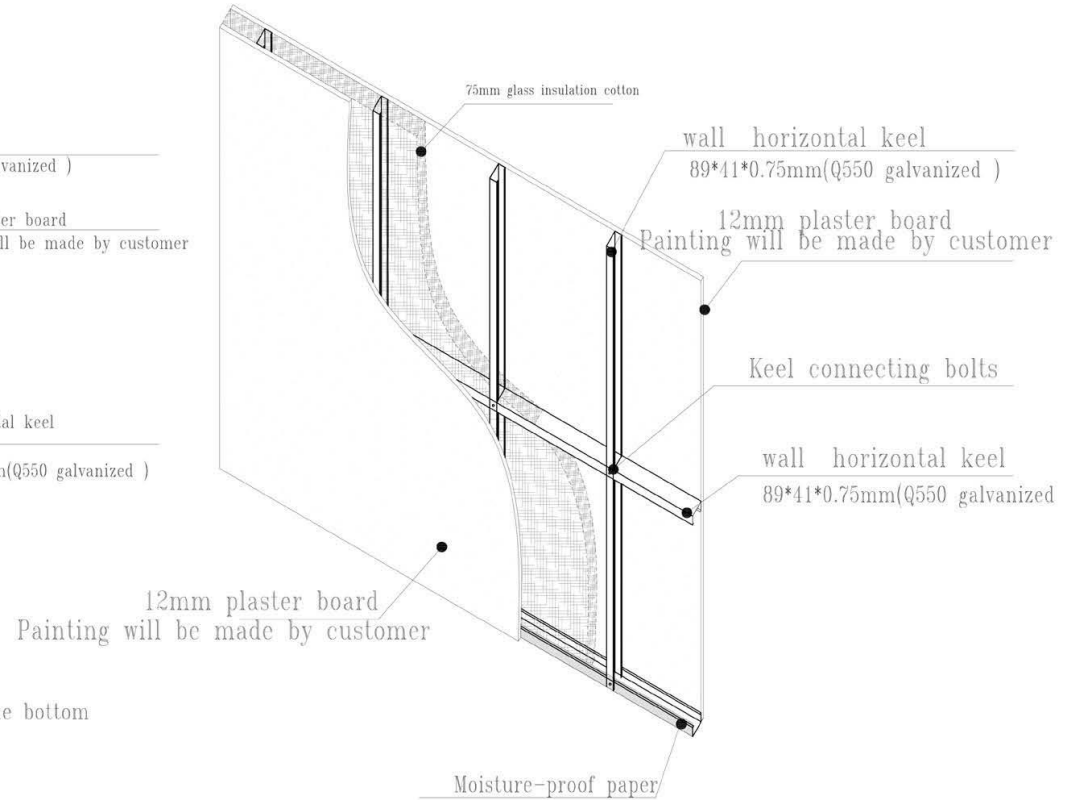
Maintenance system contains: wall--material layers from outside to inside are 27mm metal carved board, housewrap, OSB board, stud, fiber glass, gypsum board.



DESIGN

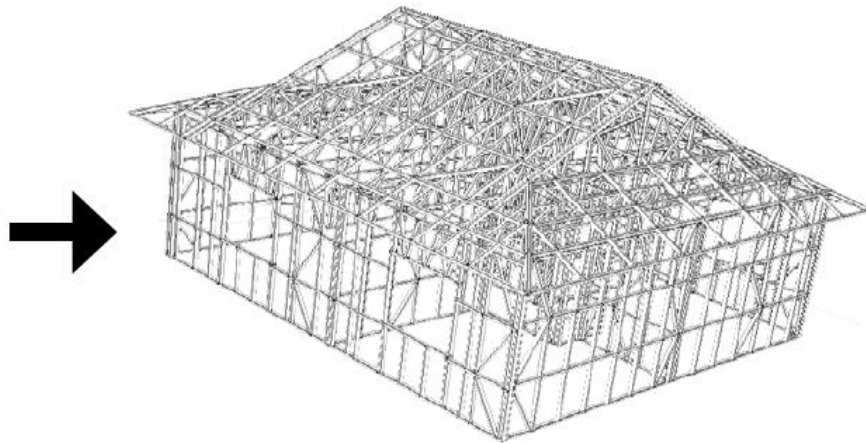
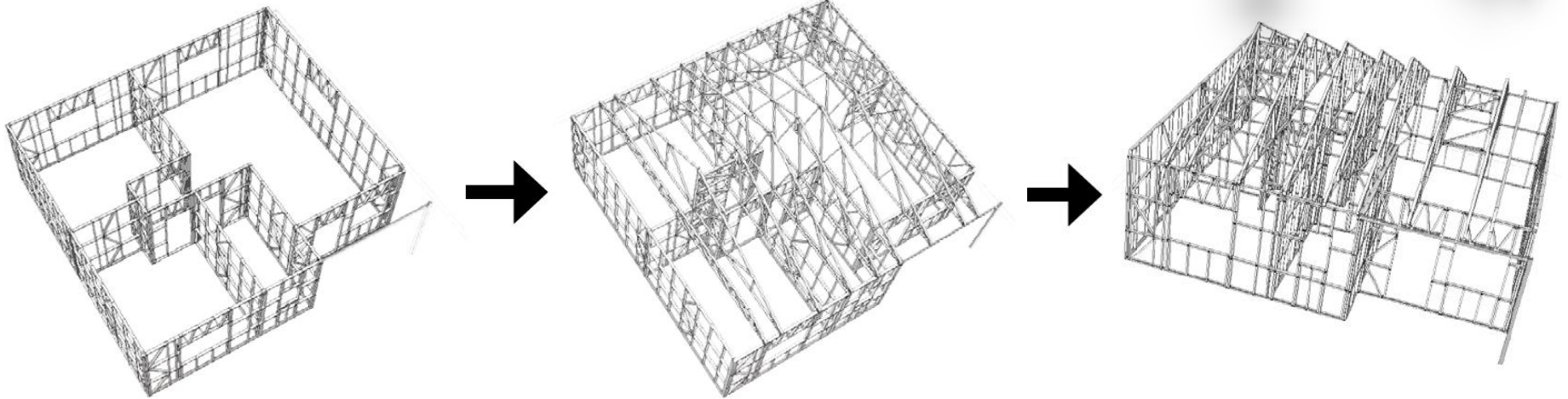


Outside wall details



Inside wall details

DEEPEN DESIGN



PTH deepen design adopts Tekla and FRAMECAD Structure design software. Before making production drawing, manager will check whether the technical information of the design drawing is clear enough, and then carry out production drawing according to the final design drawing. When deepening the design, we will ensure that the product assembly size deviation standards, welding quality technical requirements, structural connection nodes, product anti-corrosion processes, etc. meet the design technical specifications.

PRODUCTION & DELIVERY



PROCUREMENT :

PTH has a mature procurement supply chain, including product raw materials, kitchen and bathroom accessories, home equipment and other supporting facilities. Each year, PTH conducts quality assessments of suppliers, resolutely rejects unqualified suppliers, and guarantees the quality of products from the source.

PRODUCTION :

PTH owns hundreds of fully automatic mechanized production lines, which ensures high production efficiency and timely delivery. In the manufacturing process, PTH can provide production progress reports to customers through pictures and video. PTH has a professional quality inspection team which takes strict quality control in each process, and make sure defect product never be delivered to client.

TRANSPORTATION :

PTH, who has more than 20 years of international logistics experience. can provide customers with the best transportation routes, customs declaration, commodity inspection and other services, and truly realizes "door to door."



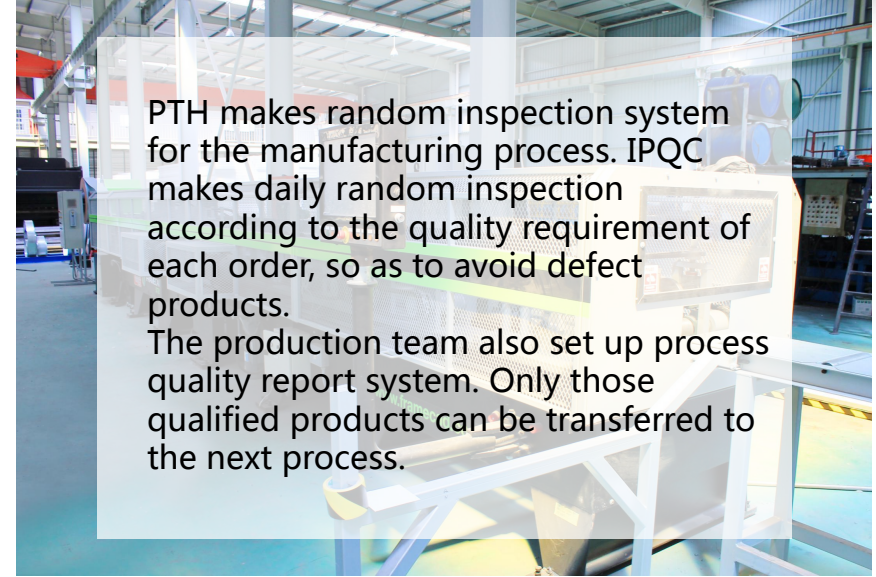
PRODUCTION PICTURES



Quality is the life of an enterprise and the foundation of sustainable development. PTH strictly follows the ISO9000 quality system and makes quality control in each process from material procurement to finished product delivery.

For outsourcing raw materials and accessories, it is reported to the ICQC team for inspection. ICQC will inspect according to "Raw Material Inspection Regulations", ensure the material technical specifications and quality meet GB standards, then upload the inspection record, QC document and test report to the ERP system.

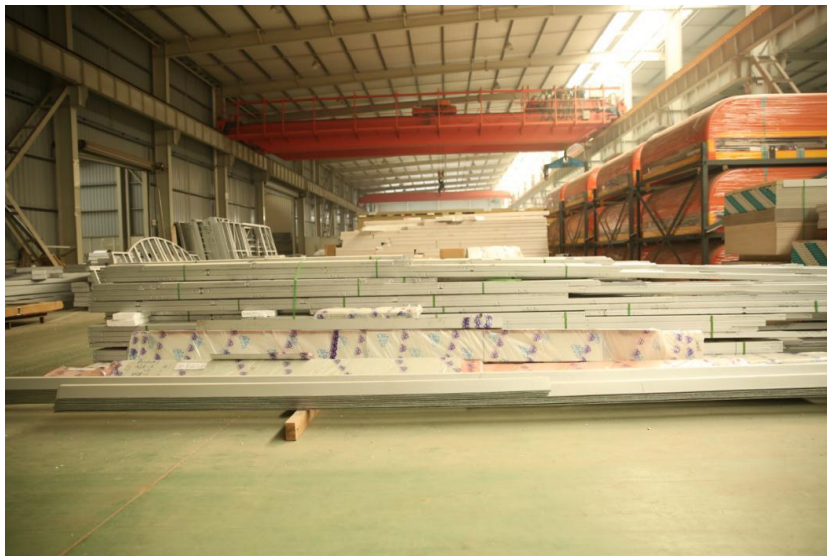
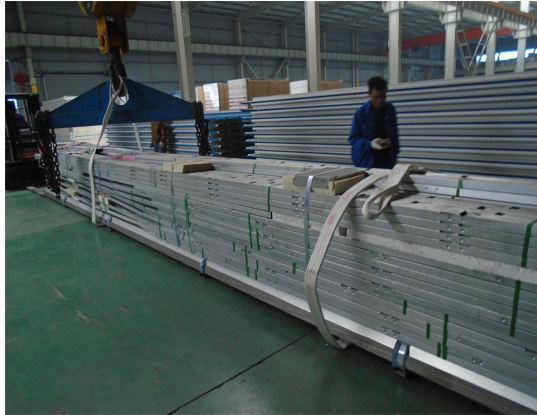
PRODUCTION PICTURES



PACKAGE & LOADING



PTH makes the most reasonable package plan according to the structure characteristics and quality requirement. The modular package design of the spare part effectively reduce the package volume. The spare parts of each module is packed in a separate package, these small package modular combination ensures a easy transportation and installation, which in return makes the loading and unloading much easier, and greatly reduces labor cost.



INSTALLATION



PTH will provide complete and detailed installation drawings for the product. PTH has professional photography and post-production personnel who can provide installation videos for the product and intuitively demonstrate the installation steps and installation details of the product.

PTH owns on-site installation guidance experience for dozens of projects such as Mozambican light steel villa resorts, Chilean container camps, etc. It can provide EPC construction services and technical guidance according to the needs of customers to ensure the smooth and safe construction of the houses required by customers and realize real "Check-in".

PTH dispatched 8 employees to Mozambique (2 installation technicians, 6 workers) and then assembled all the materials on site.

INSTALLATION



URL : www.pthouse.com / www.putianhouse.com
E-mail : inquiry@putianhouse.com

INSTALLATION



INSTALLATION



INSTALLATION



INSTALLATION



INSTALLATION





CLIENT FEEDBACK



We use BIM system to manage and operate the whole project. For the maintenance, PTH provide online technical support or maintenance service on the site per client requirement.

The resort hotel project has been put into use, bringing good profits to the local area, promoting the development of Mozambique's tourism industry, and filling the gap in the local resort hotel market.



CLIENT FEEDBACK



URL : www.ptthouse.com / www.putianhouse.com
E-mail : inquiry@putianhouse.com

CLIENT FEEDBACK



CLIENT FEEDBACK



CLIENT FEEDBACK



URL : www.pthhouse.com / www.putianhouse.com
E-mail : inquiry@putianhouse.com