

PTH

Logistics Warehouse-Virgin Islands

1. Project No. : PTX4W486
2. Project time : 2012.12—2013.5
3. Location : Virgin island
4. Area : over 10000m²
5. Solution : steel structure
6. Usage : logistics warehouse
7. Project features: large logistics distribution center project, the design of warehousing, logistics, people flow and other functions of a good planning and design



Project Design



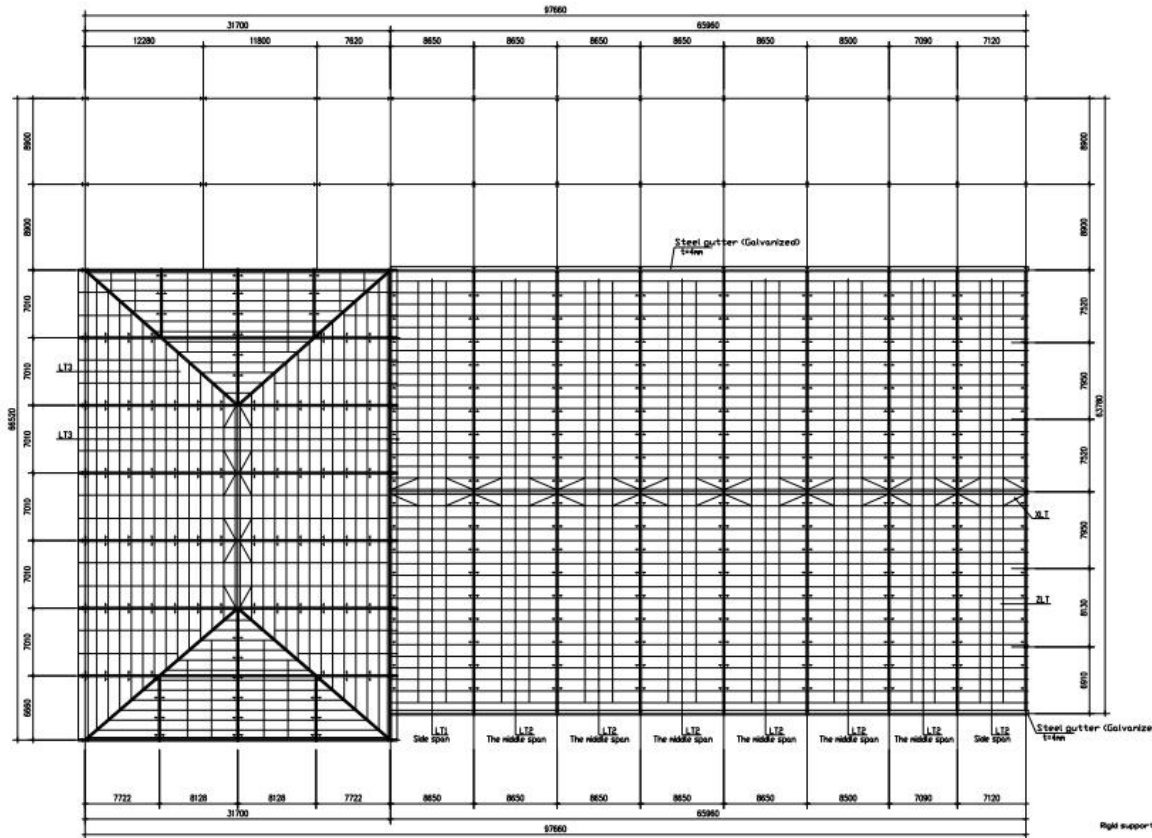
PTH has more than 100 R&D technical engineers, providing customized design services. Using the relevant information data of the construction project as the basis of the model, the building model is established, and the real information of the building is simulated through digital information simulation. At present, we have completed the research and development of the Revit family library of various products of the company, which makes our design efficiently, and at the same time can fully show the detailed nodes and 3D view of to customers.

Characteristics of the project: the project is two layers of logistics warehouse, partial three layers, including three parts as the office area, the main floor area for logistics warehouse, outdoor open-air floor structure is the parking lot, with a total construction area of more than 10000 square meters, it is one of the largest distribution center in local. It is PTH's first time to undertake large-scale logistics distribution center project. This project for the PTH provides a perfect opportunity to show their skills and performance.

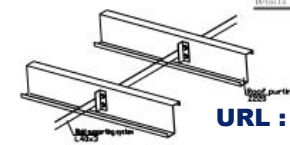
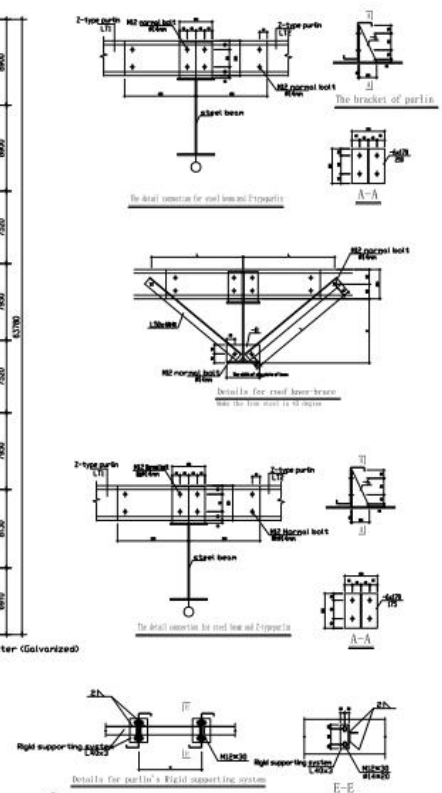
Drawing



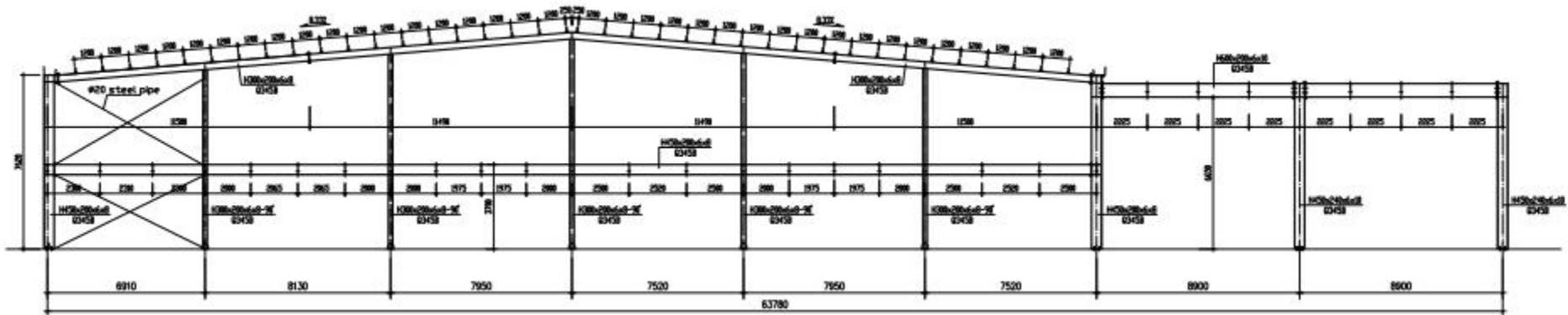
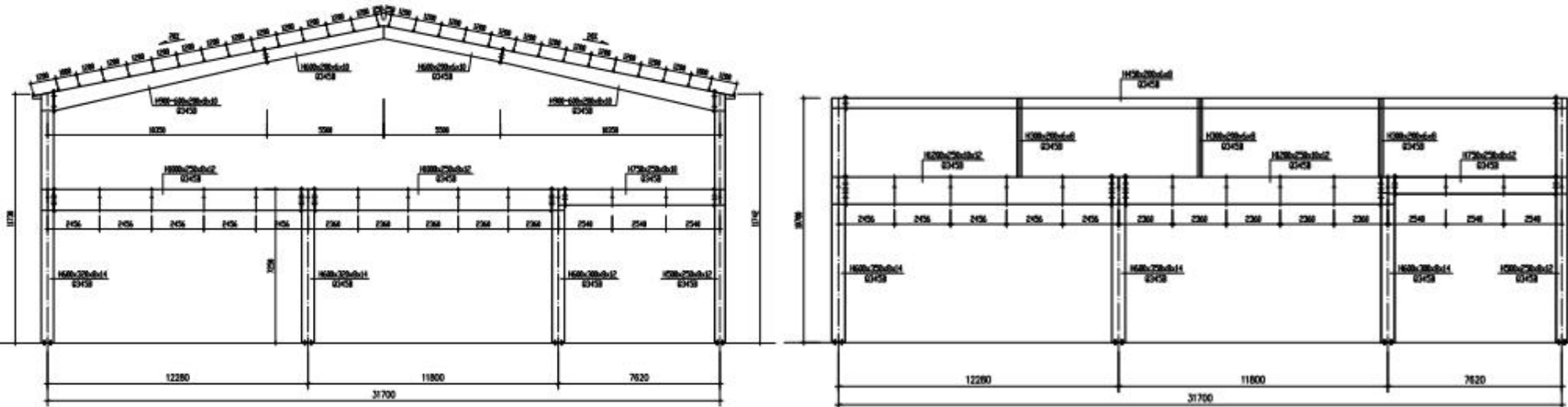
The design of PTH are designed according to the customer's requirements and local building codes. After obtaining the local government's approval, the design can be further deepened after finally passing the local government's review. The PTH's experienced team took space usage into account and allocated functional areas such as offices and car parks in addition to the main storage area.



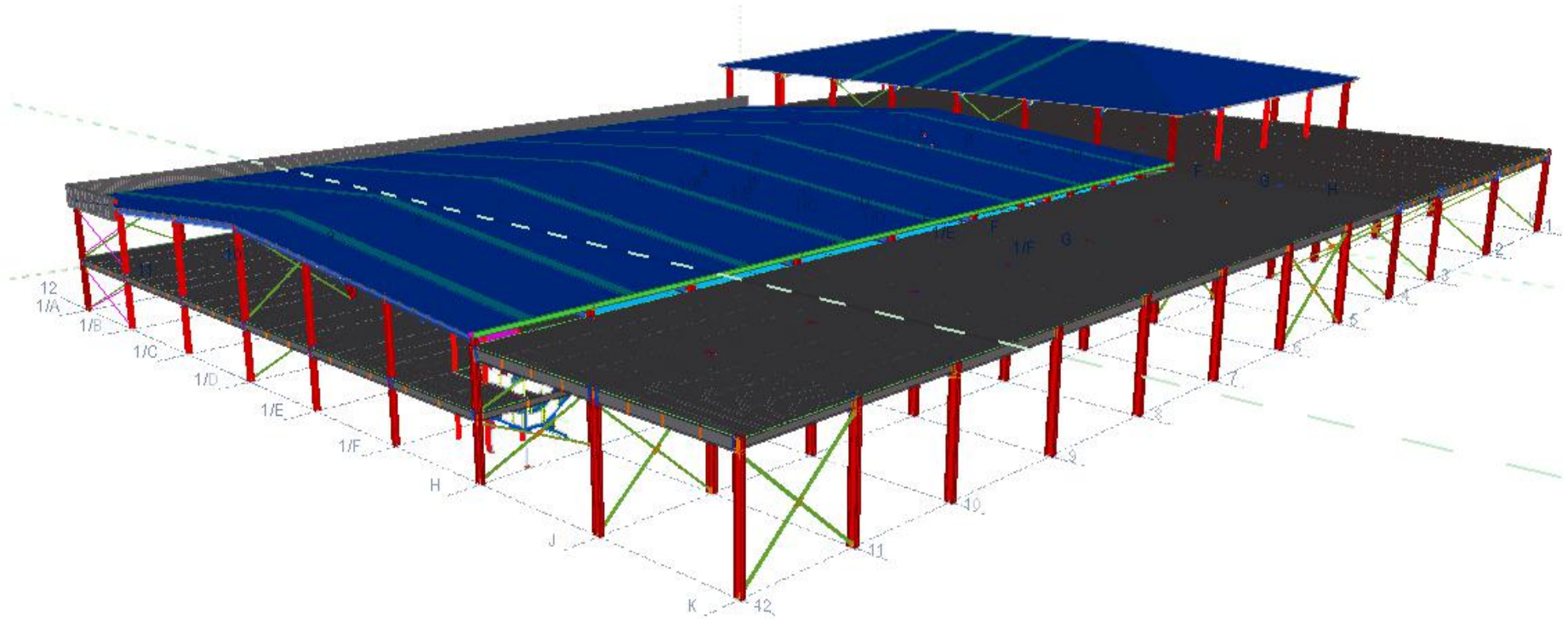
Layout for roof purlin plan
Note: here with knee-brace



Drawing

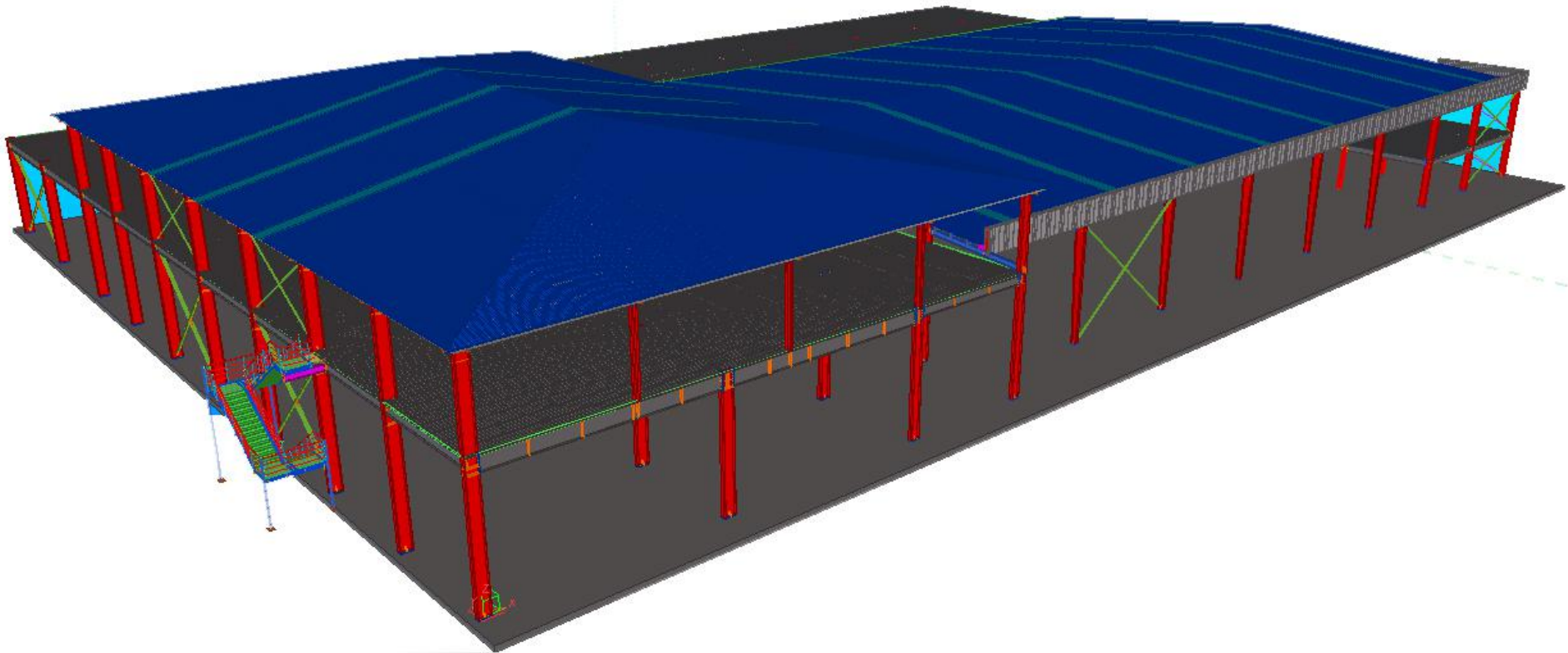


Deepen the figure

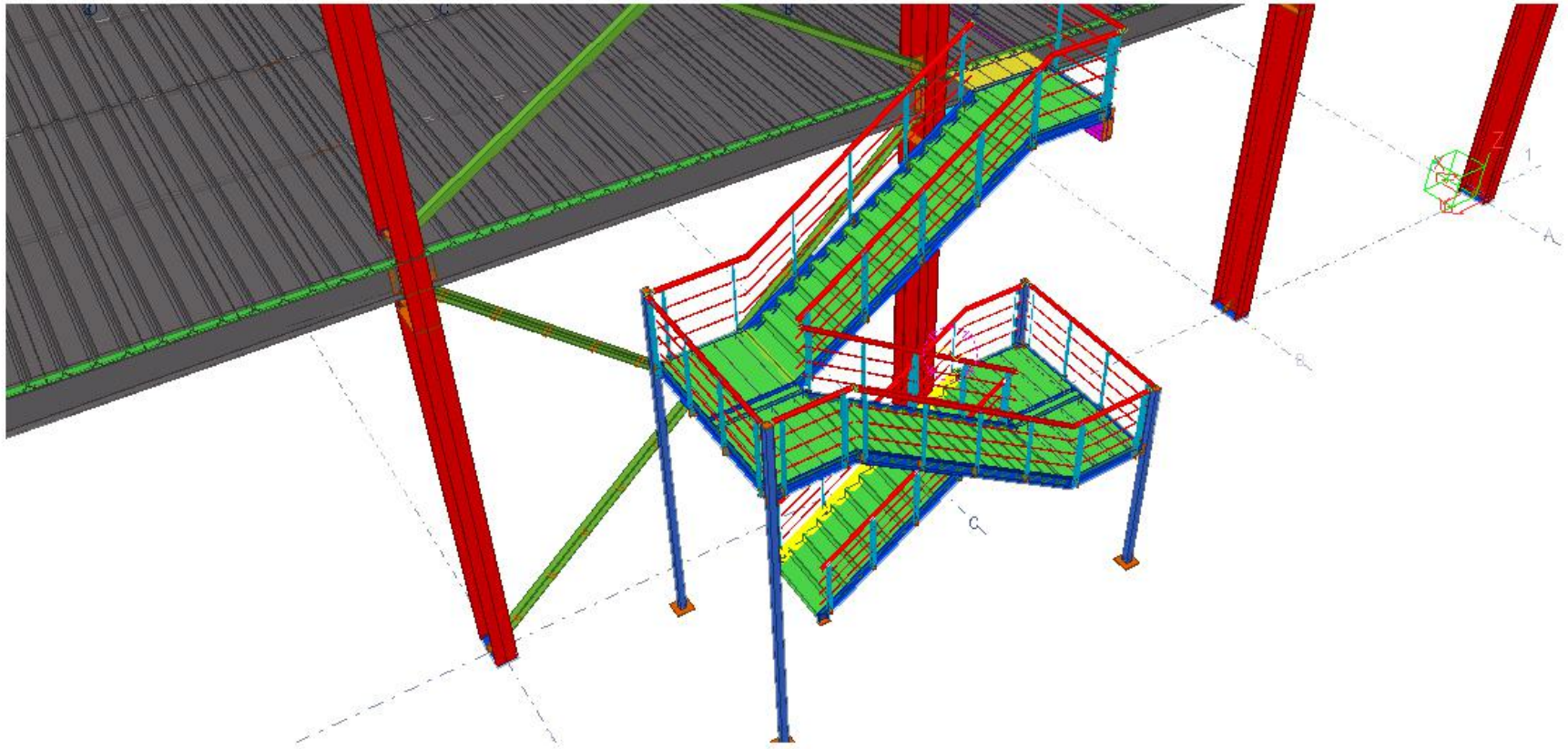


PTH deepening division adopts Tekla and FRAMECAD Structure deepening design software. Before deepening the design, you need to check whether the technical information of the design drawing meets the technical requirements of the deepening design, and then carry out the deepening design and production according to the final design drawing. When deepening the design, we must ensure that the product assembly size deviation standards, welding quality technical requirements, structural connection nodes, product anti-corrosion technology, etc. meet the design technical specifications.

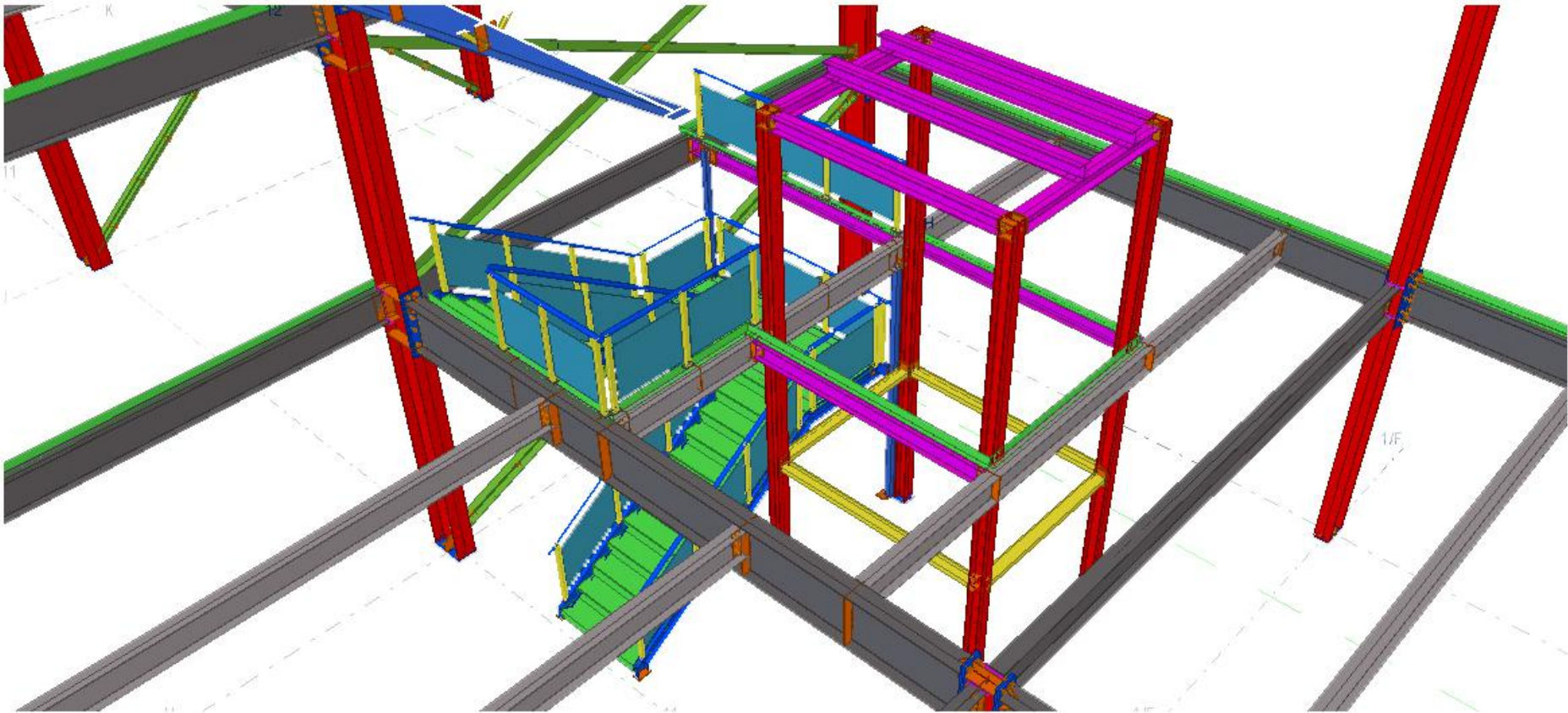
Deepen the figure



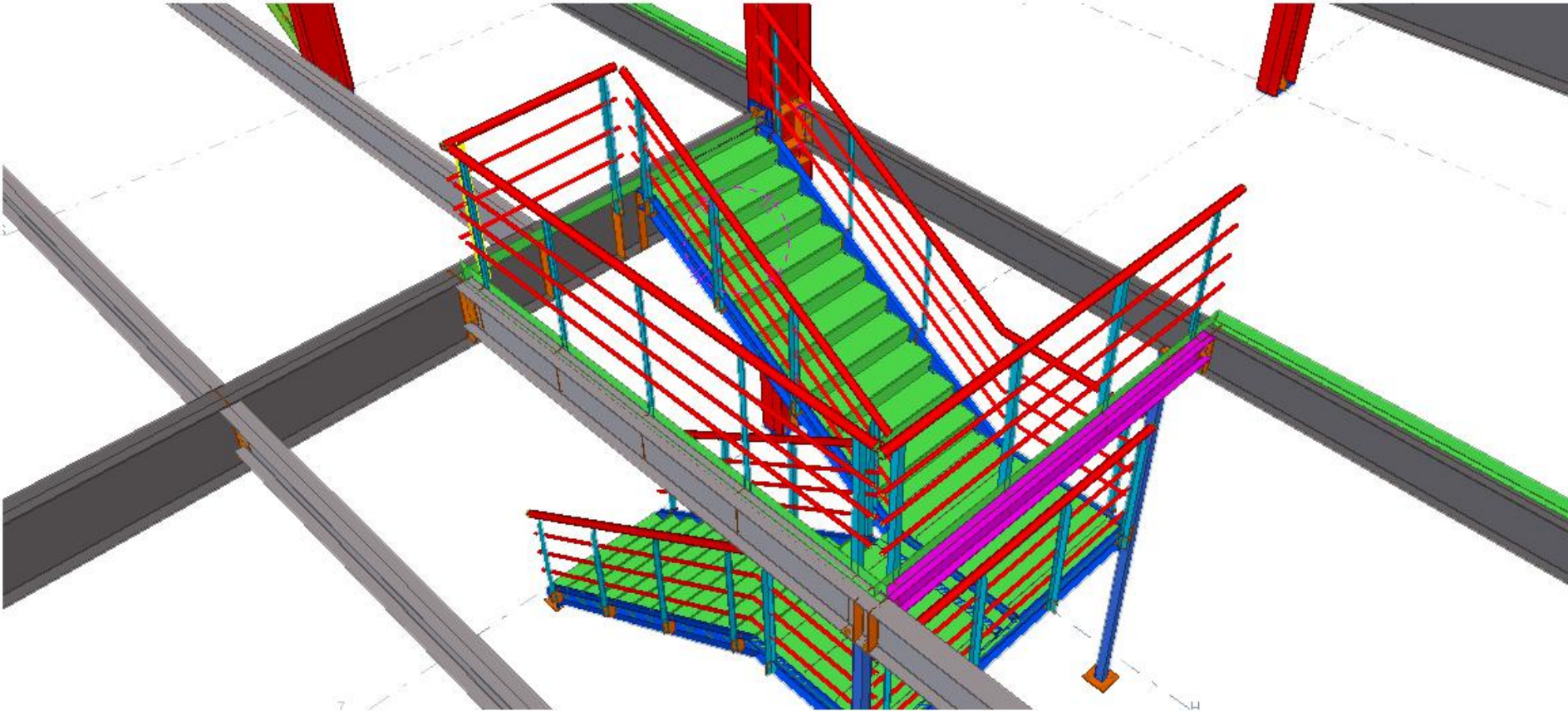
Deepen the figure



Deepen the figure



Deepen the figure



PRODUCTION & DELIVERY



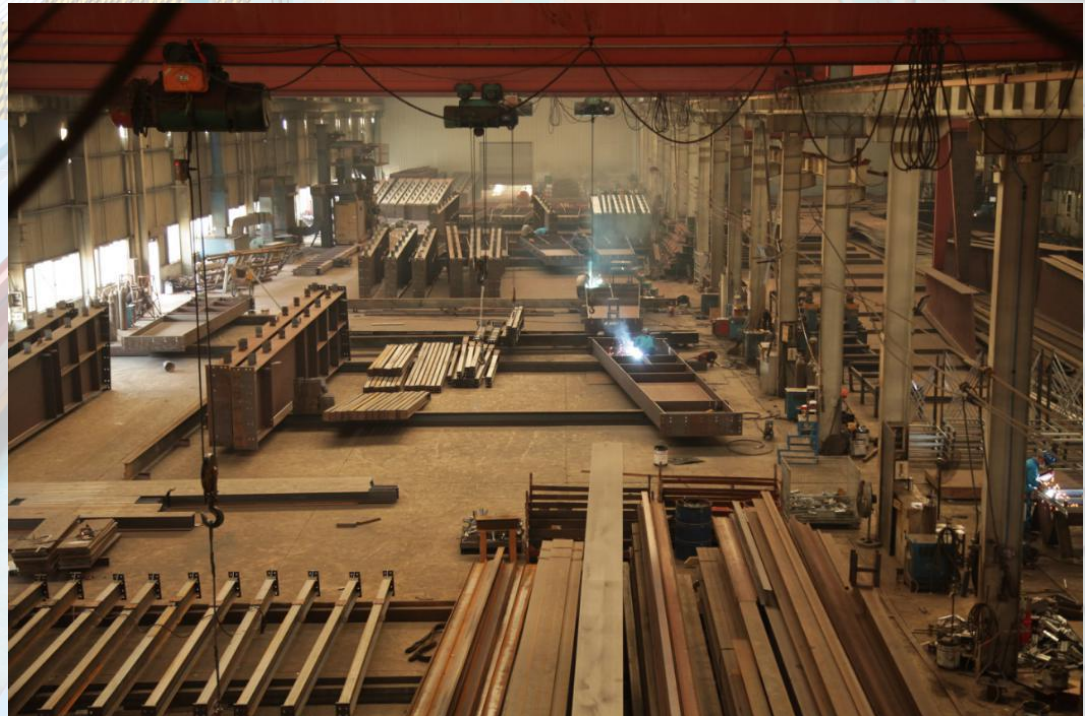
PROCUREMENT :

PTH has a mature procurement supply chain, including product raw materials, kitchen and bathroom accessories, home equipment and other supporting facilities. Each year, PTH conducts quality assessments of suppliers, resolutely rejects unqualified suppliers, and guarantees the quality of products from the source.



PRODUCTION :

PTH owns hundreds of fully automatic mechanized production lines, which ensures high production efficiency and timely delivery. In the manufacturing process, PTH can provide production progress reports to customers through pictures and video. PTH has a professional quality inspection team which takes strict quality control in each process, and make sure defect product never be delivered to client.



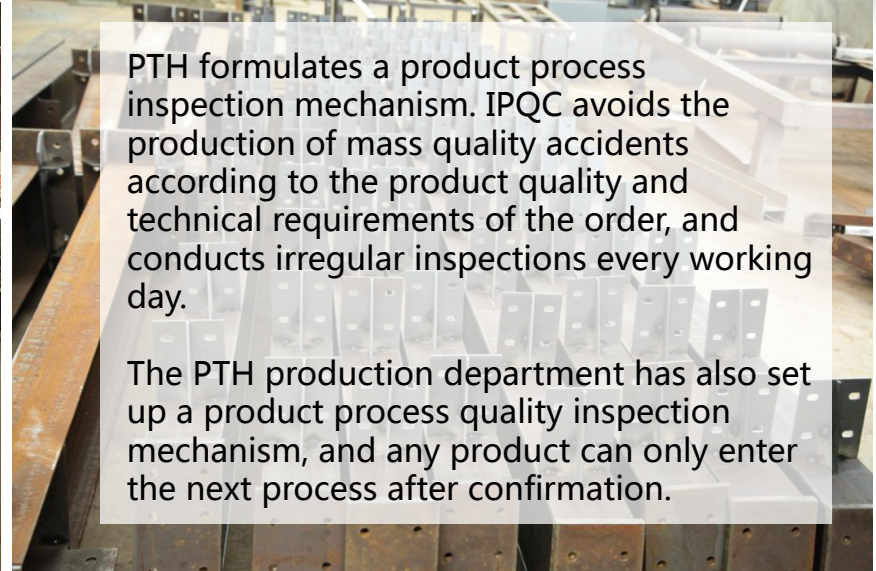
TRANSPORTATION :

PTH, who has more than 20 years of international logistics experience. can provide customers with the best transportation routes, customs declaration, commodity inspection and other services, and truly realizes "door to door."

Quality is the core value and the foundation of the company's continuous development. PTH follows the ISO9000 quality system. From the beginning of raw material procurement, every link is strictly controlled.

After purchasing and supplying from the procurement department, the raw and auxiliary materials and outsourced products need to be inspected. ICQC conducts inspections according to the "Original and auxiliary material inspection standards" and confirms that the technical quality/information of the materials meets the requirements of the design specification GB. Upload quality documents and experiment reports to the ERP system.

Production view

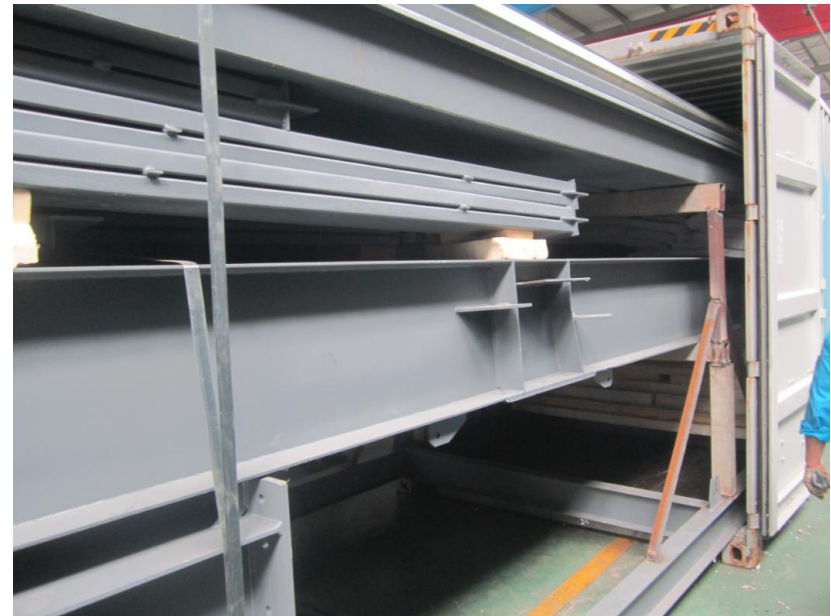
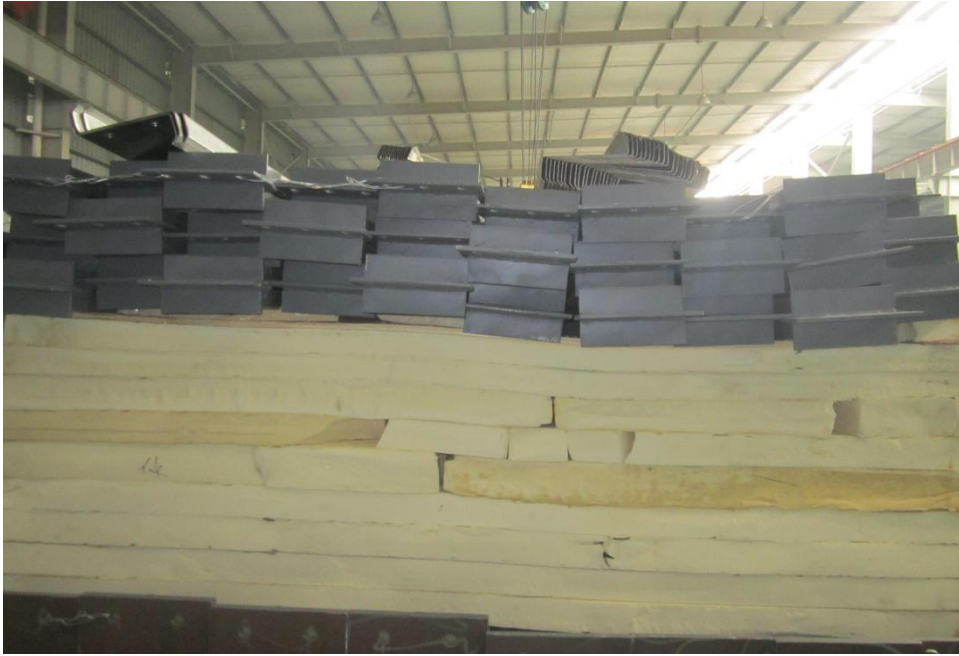


Packing&Loading

PTH make reasonable packaging plan according to product structure characteristics and quality requirements. The logistics of this project is divided into two batches, a total of 22 cabinets, the first batch of 10 containers and the second batch of 12 containers. PTH use component unit design in packaging, which effectively reduces the volume of product packaging. Each unit component use independent small package, and multiple small packages are combined into an integral package that is easy to transport and install. Because of the overall packaging, easy to load and unload, it reduced the labor cost for client greatly.



Packing&Loading



Installation



In the traditional installation process, welding is a difficult job for local unskilled workers. In this project, PTH uses high-strength bolts to connect accessories to accessories to improve installation efficiency and accuracy, so that local workers can install quickly.

Installation



Installation



Installation



URL : www.pthhouse.com / www.putianhouse.com
E-mail : inquiry@putianhouse.com

Installation



Installation



Feedback



We use the BIM system to manage and operate the entire project. PTH can provide telephone consultation and guidance according to customer needs after installed, we can also provide on-site maintenance and repair services according to customer needs.

This is an old customer of PTH, we had worked on some small container projects before. The communication between the two sides is very smooth, they understand each other quite well, and they have a certain degree of trust, so the client is very relieved to entrust PTH to do such projects.

