

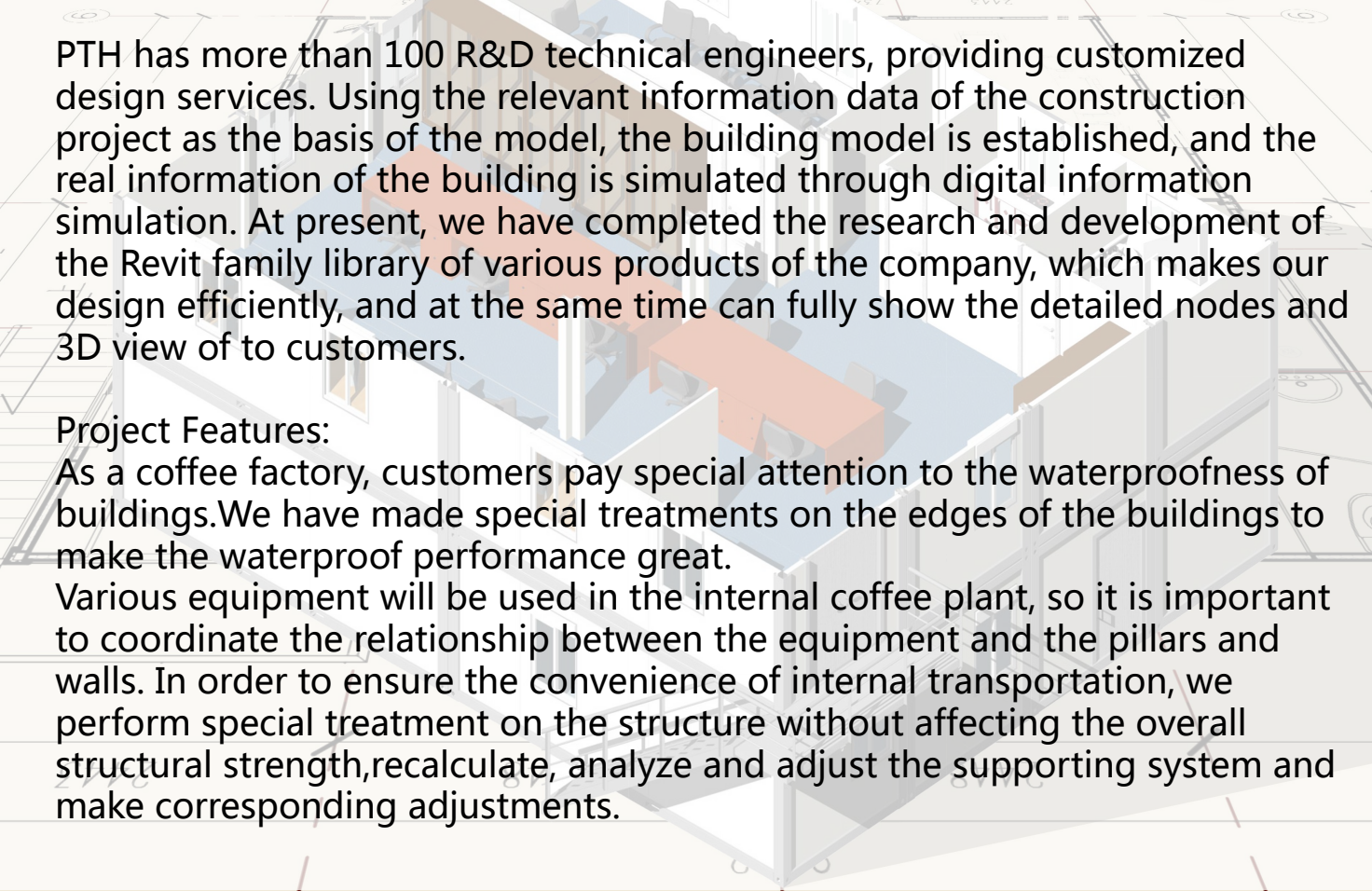
**PTH**

## Coffee plant-Nicaragua

1. Project No. : PT170425
2. Time : 2017
3. Location : Nicaragua
4. Area : 4600m<sup>2</sup>
5. System : steel structure
6. Usage : food plant
7. Project features:  
multi-span steel structure,  
high waterproof standard



# Project Design

A 3D architectural rendering of a building's interior, showing a large open-plan space with a central orange-colored area, possibly a reception or lounge. The rendering is overlaid on a semi-transparent white rectangular box containing text. The background shows architectural drawings with grid lines and dimensions.

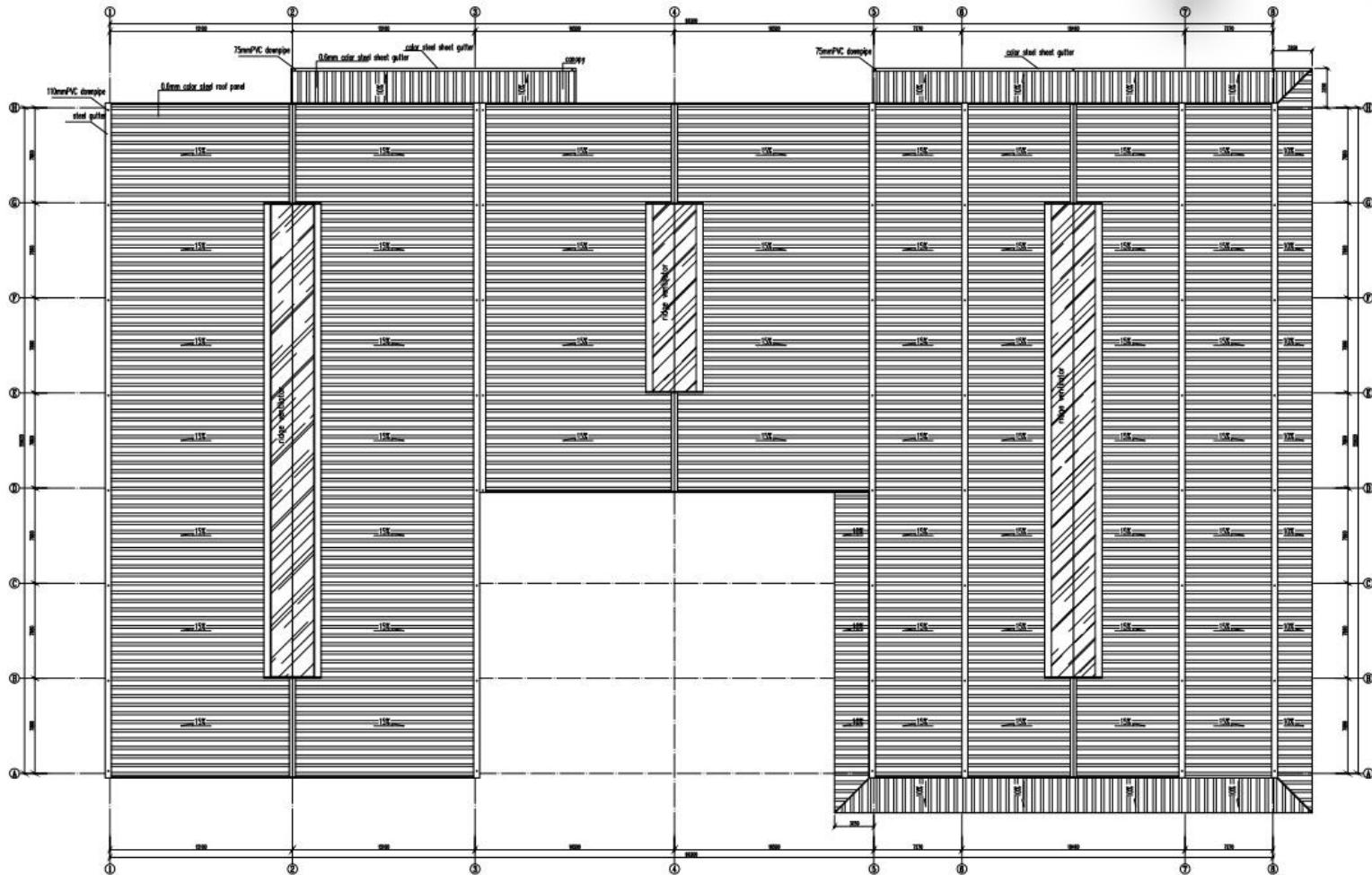
PTH has more than 100 R&D technical engineers, providing customized design services. Using the relevant information data of the construction project as the basis of the model, the building model is established, and the real information of the building is simulated through digital information simulation. At present, we have completed the research and development of the Revit family library of various products of the company, which makes our design efficiently, and at the same time can fully show the detailed nodes and 3D view of to customers.

## Project Features:

As a coffee factory, customers pay special attention to the waterproofness of buildings. We have made special treatments on the edges of the buildings to make the waterproof performance great.

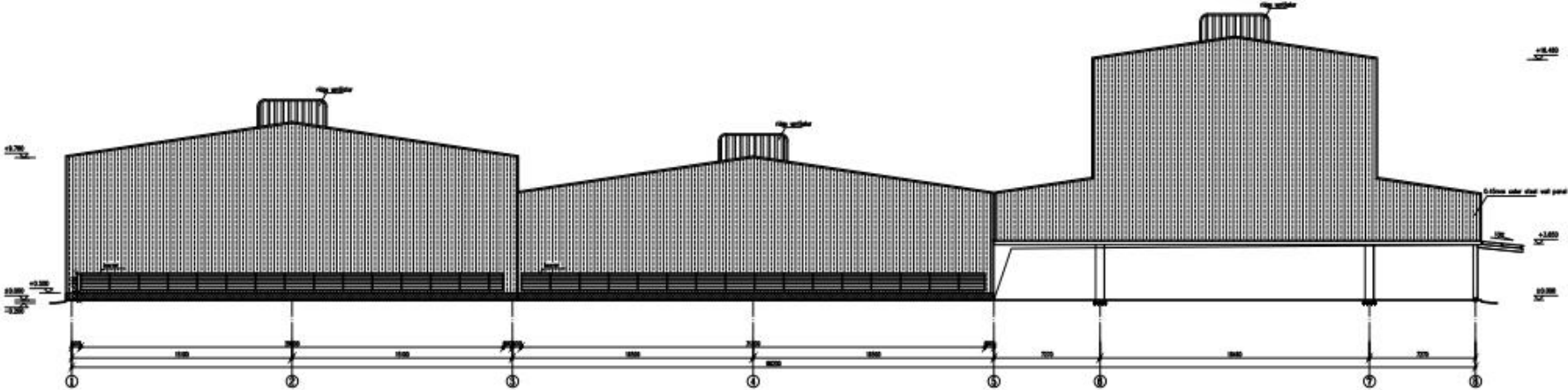
Various equipment will be used in the internal coffee plant, so it is important to coordinate the relationship between the equipment and the pillars and walls. In order to ensure the convenience of internal transportation, we perform special treatment on the structure without affecting the overall structural strength, recalculate, analyze and adjust the supporting system and make corresponding adjustments.

# Architectural drawing

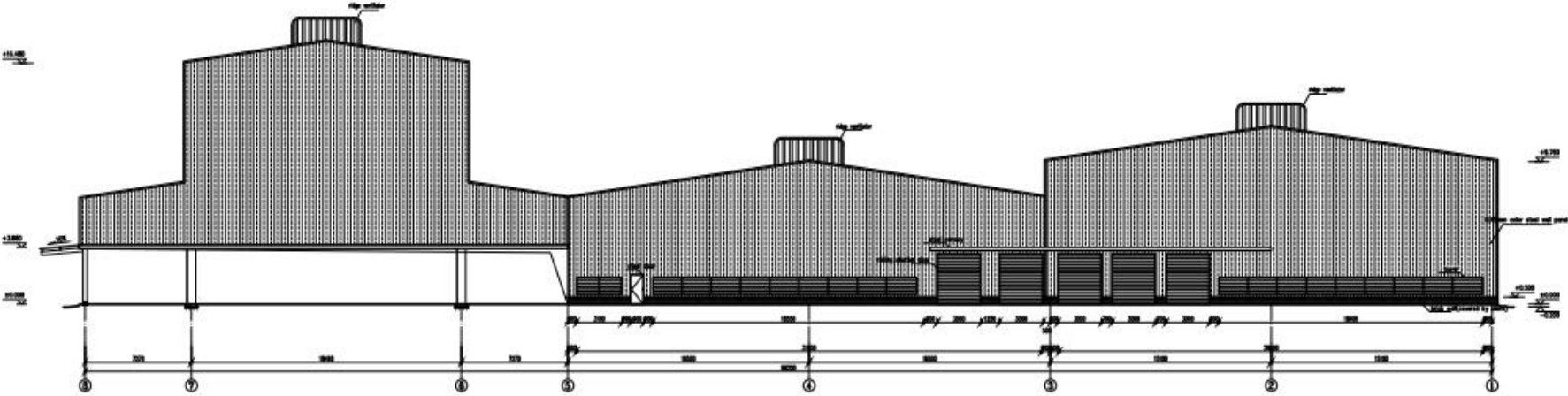


PTH's design drawings are designed according to customer needs and local building codes. After obtaining the local government's permission, they can finally continue to deepen the design after passing the local government's review.

# Architectural drawing

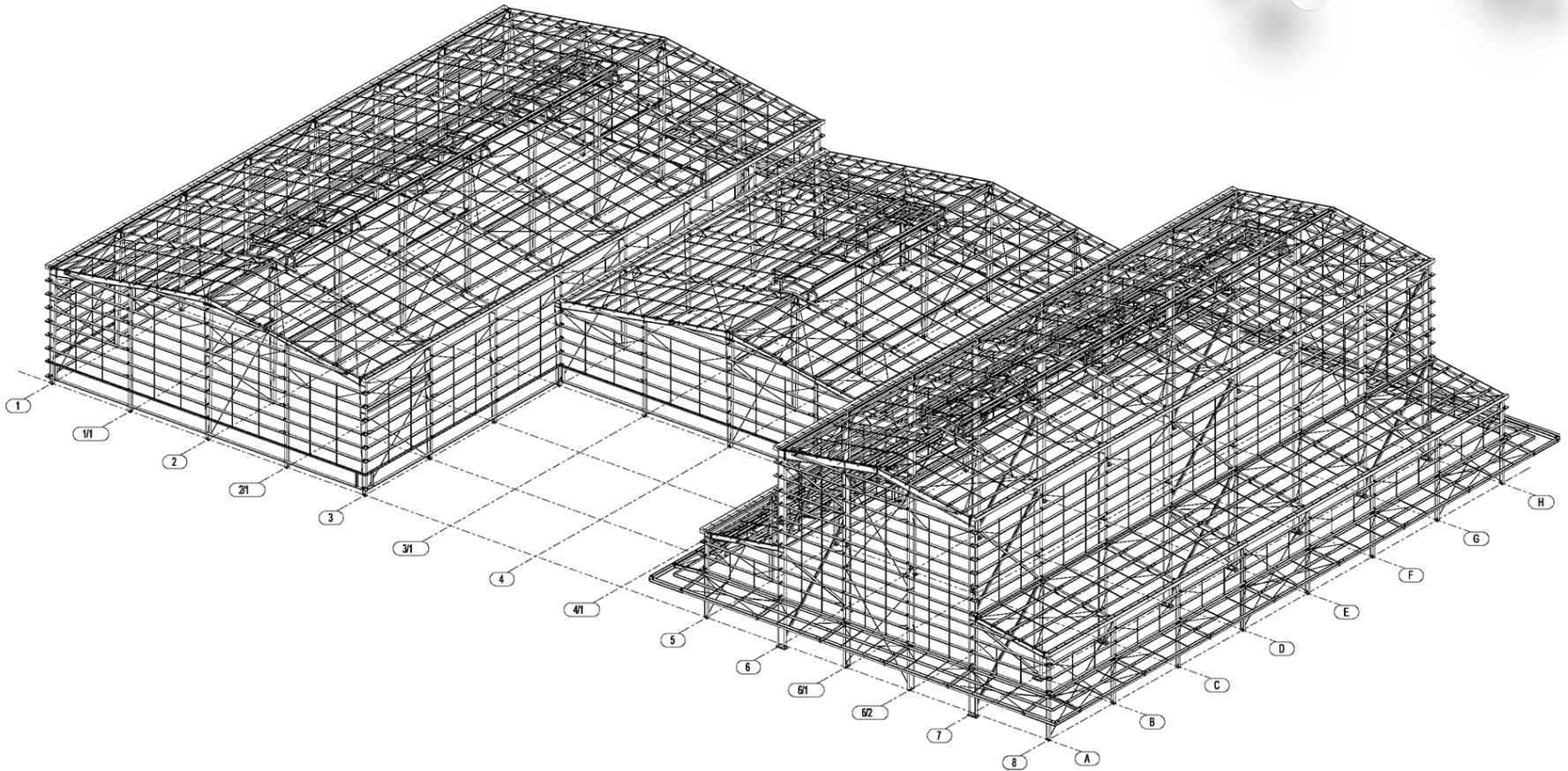


A axis elevation  
1:100



H axis elevation  
1:100

# Architectural drawing



PTH's deepening division adopts Tekla and FRAMECAD Structure deepening design software. Before deepening the design, we'll check whether the technical information of the design drawing meets the technical requirements, and then carry out the deepening design and production according to the final design drawing.

When deepening the design, we must ensure that the product assembly size deviation standards, welding quality technical requirements, structural connection nodes, product anti-corrosion technology, etc. meet the design technical specifications.

# Production&Delivery



purchase

PTH has a mature supply chain, includes raw materials, kitchen, bathroom accessories, household equipment and other facilities. PTH conducts quality assessment of suppliers every year, and rejects unqualified suppliers firmly to ensure the quality of goods.

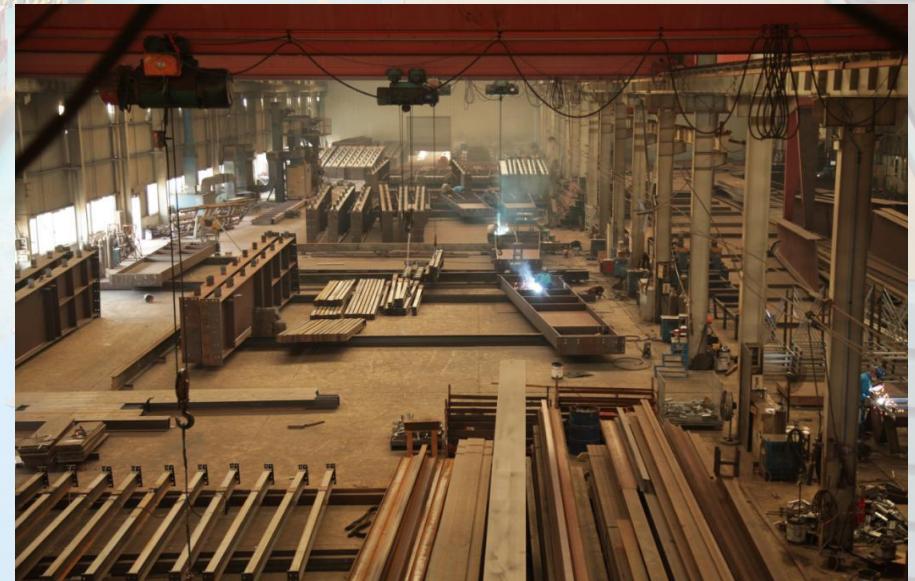
produce:

PTH has hundreds of fully automatic production lines, which can be combined with efficient production arrangements to provide a strong guarantee for timely delivery of orders.

PTH has a professional quality inspection team. Every product process will undergo strict quality inspection, and products that do not meet the quality standards will never be shipped.

transport:

PTH has more than 10 years of international logistics experience, we can provide transportation routes, customs declarations, commodity inspections and other services, truly "door-to-door" products.



## Production view

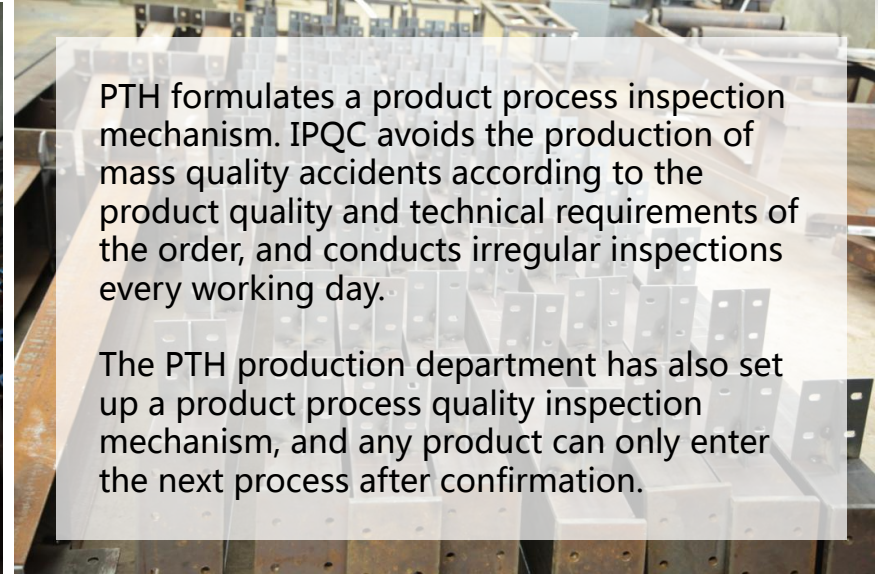
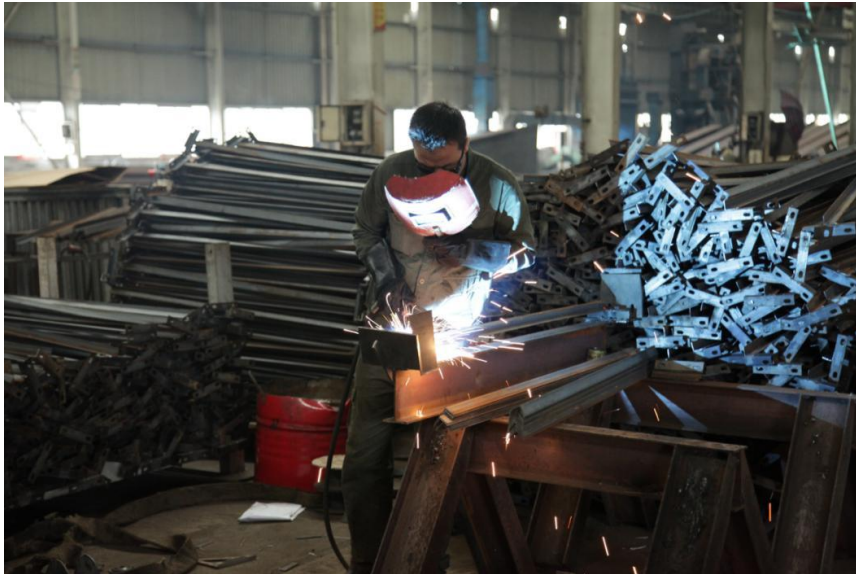


Quality is the core value and the foundation of the company's continuous development. PTH follows the ISO9000 quality system. From the beginning of raw material procurement, every link is strictly controlled.

After purchasing and supplying from the procurement department, the raw and auxiliary materials and outsourced products need to be inspected. ICQC conducts inspections according to the "Original and auxiliary material inspection standards" and confirms that the technical quality/information of the materials meets the requirements of the design specification GB. Upload quality documents and experiment reports to the ERP system.



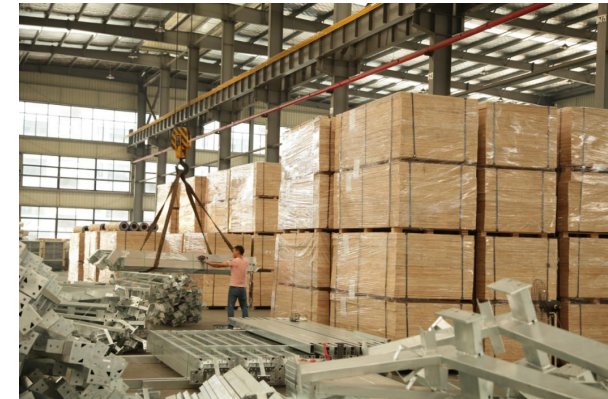
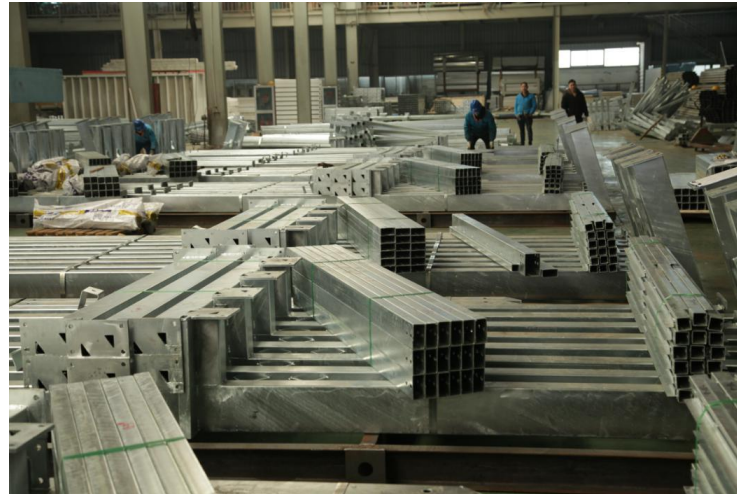
## Production view





## Packing&Loading

PTH provide suitable solutions based on product structure characteristics/customer quality requirements. The steel structure parts are loaded by 10 pieces of 40HQ containers. To avoid damage during transportation, PTH adopts the unitized design of parts when packing, which effectively reduces the volume. The components are in independent small packages, so that it is easy to transport and install and save labor cost for client.



# Packing&Loading



# Installation



PTH will provide complete and detailed installation drawings for the products. Our professional team can provide installation video for the product, intuitively display the installation steps and installation details of the product.

PTH has on-site installation guidance experience for dozens of projects such as Mozambique Light Steel Villa Resort, Chile Container Camp, etc. It can provide EPC construction services and technical guidance according to customer needs to ensure the smooth and safe construction of projects.



Site view



URL : [www.pthhouse.com](http://www.pthhouse.com) / [www.putianhouse.com](http://www.putianhouse.com)  
E-mail : [inquiry@putianhouse.com](mailto:inquiry@putianhouse.com)

## Site view



## Feedback from client



We use the BIM system to manage and operate the entire project. PTH can provide telephone consultation and guidance according to customer needs after installed, we can also provide on-site maintenance and repair services according to customer needs.

This is the first order of this new customer. The success of the project has also been recognized by the customer, now keeping a long term business with us.



Site view



URL : [www.pthhouse.com](http://www.pthhouse.com) / [www.putianhouse.com](http://www.putianhouse.com)  
E-mail : [inquiry@putianhouse.com](mailto:inquiry@putianhouse.com)

# Site view

