

**PTH**

## Container House Office

1. Project # : PT190225
2. Project time : 2019
3. Location : Singapore
4. Scale : 14 units 3m\*9m container houses
5. Category : Container house
6. Application : Office
7. Features: Customized length



# PROJECT DESIGN



PTH owns 100+ architect and engineers at home and abroad, to provide customized design service for client with different requirements. We use the relevant information data of construction projects as the basis of the model to build the building model, and simulate the real information of the building through digital information simulation.

Features : The container houses are used for office. The roof and floor structure are all prefabricated in the factory, but assembled on the site. We make customized size for this special project. The regular size is 6058mm long, we can make it 7038mm ( 23ft ) / 8020mm ( 26ft ) / 9000mm ( 30ft ) .

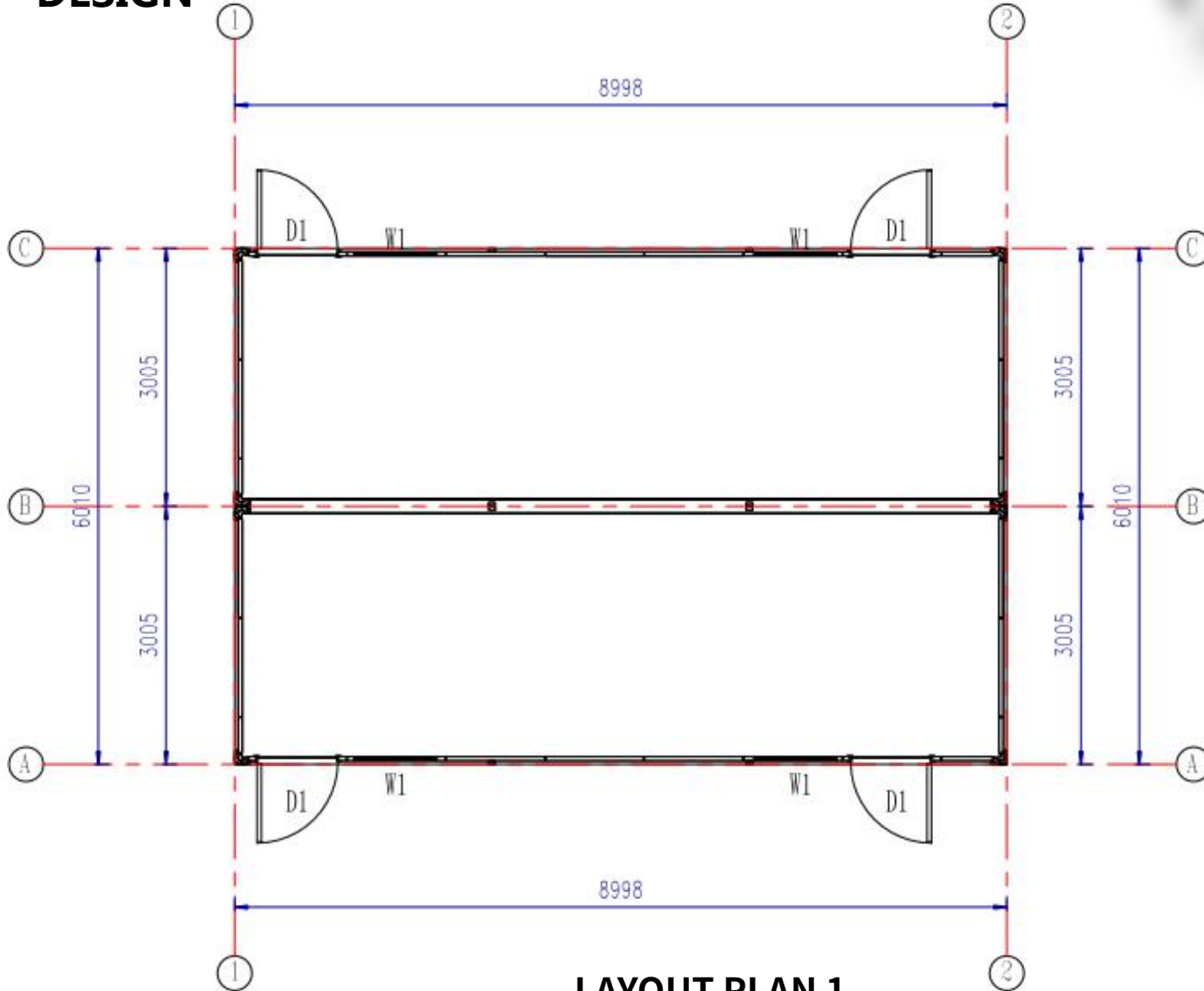
The project includes two layout plans :

Plan 1 : 54sqm , 2 units 3x9m container house combined , 1 unit

Plan 2 : 81sqm , 3 units 3x9m container house combined , 4 unit

Each plan include 4pcs steel security doors, 4pcs Aluminum sliding windows. The roof is 70mm rock wool sandwich panel , the wall is 50mm rock wool sandwich panel.

# DESIGN

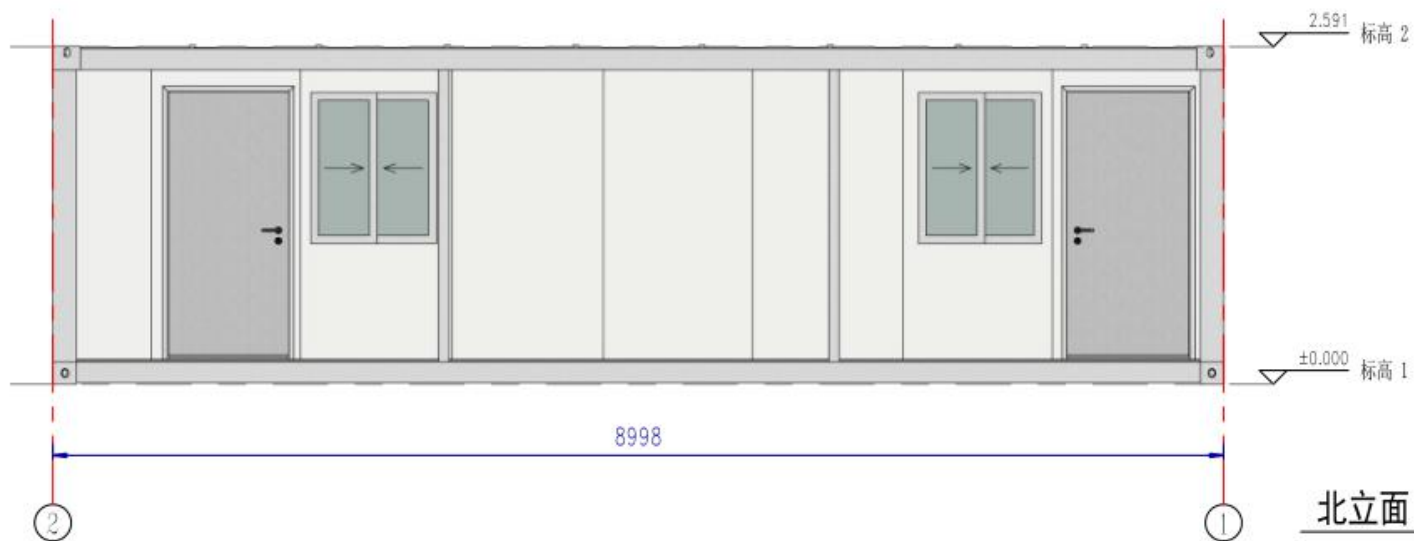
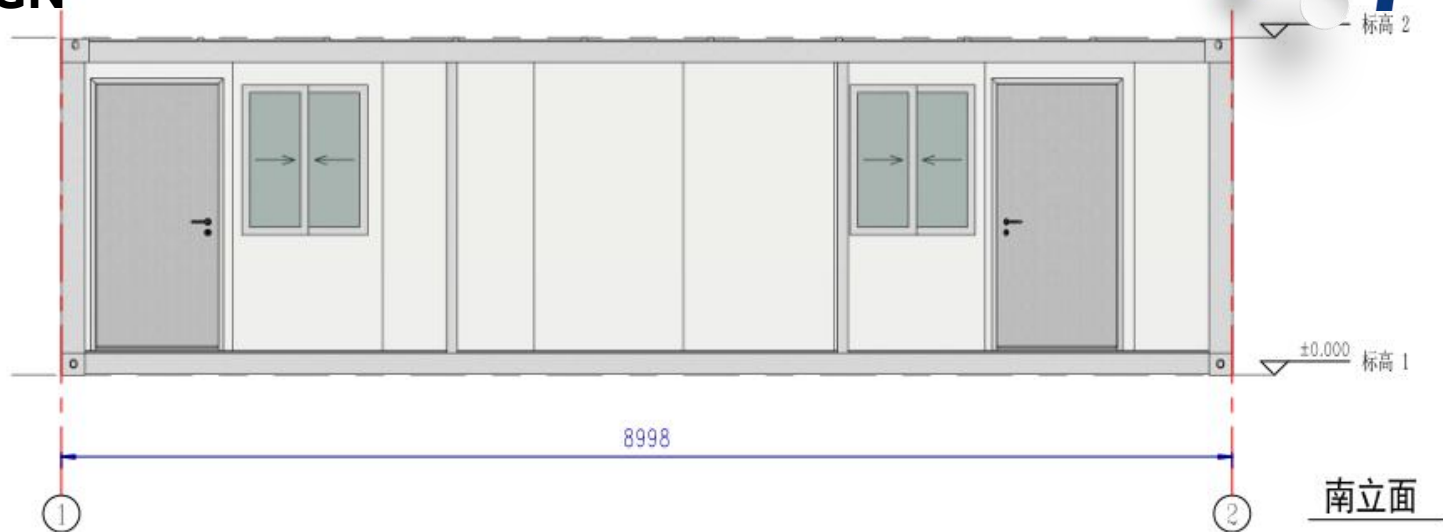


**LAYOUT PLAN 1**

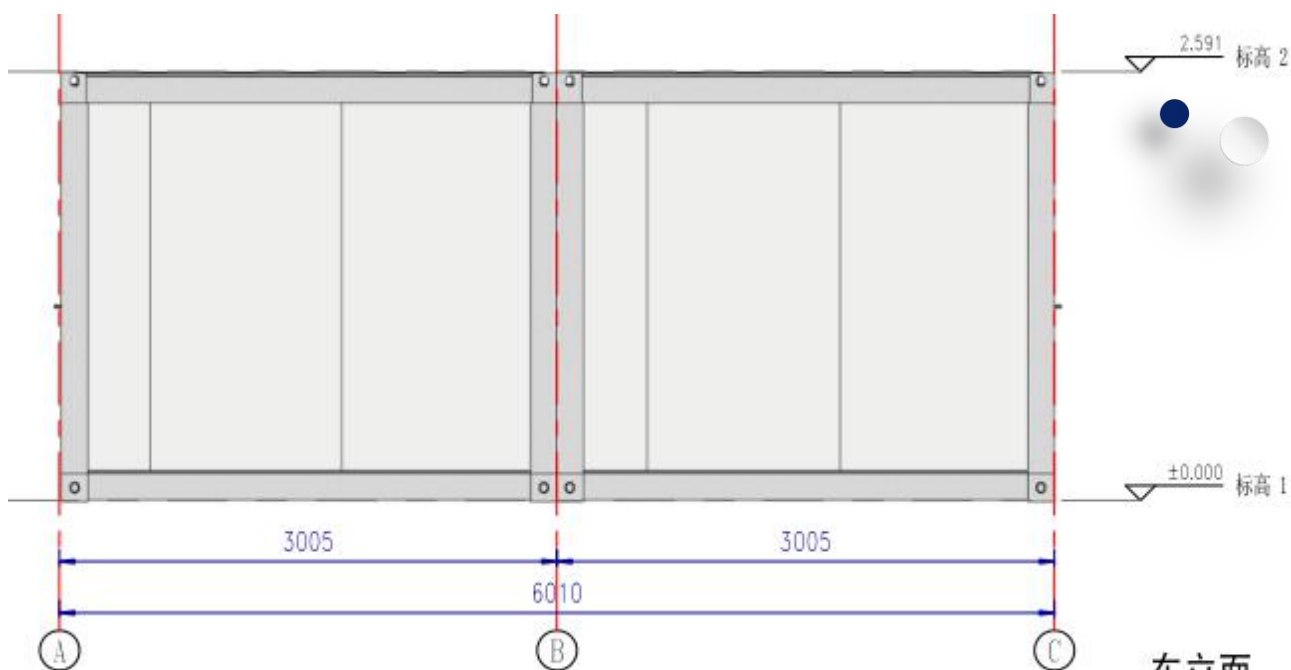
The preliminary design is made in accordance with client's requirement and local building code.

After getting the permission by local authority, PTH will do the shop drawing for production.

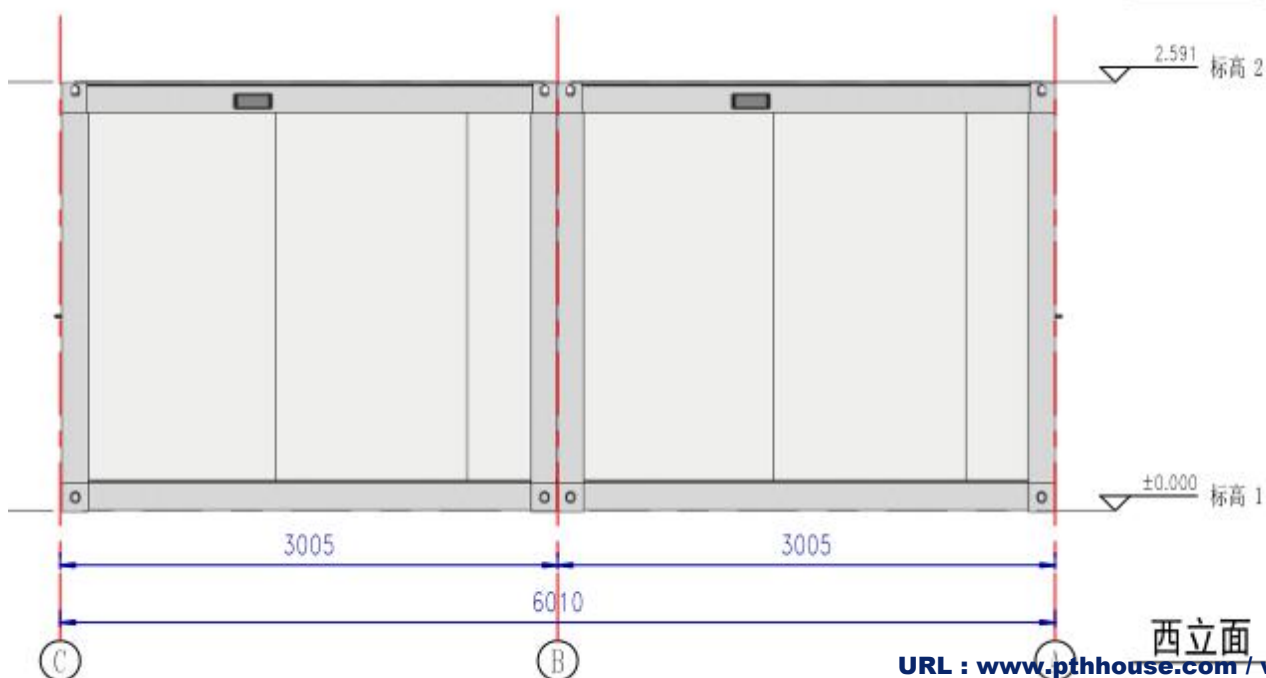
# DESIGN



# DESIGN

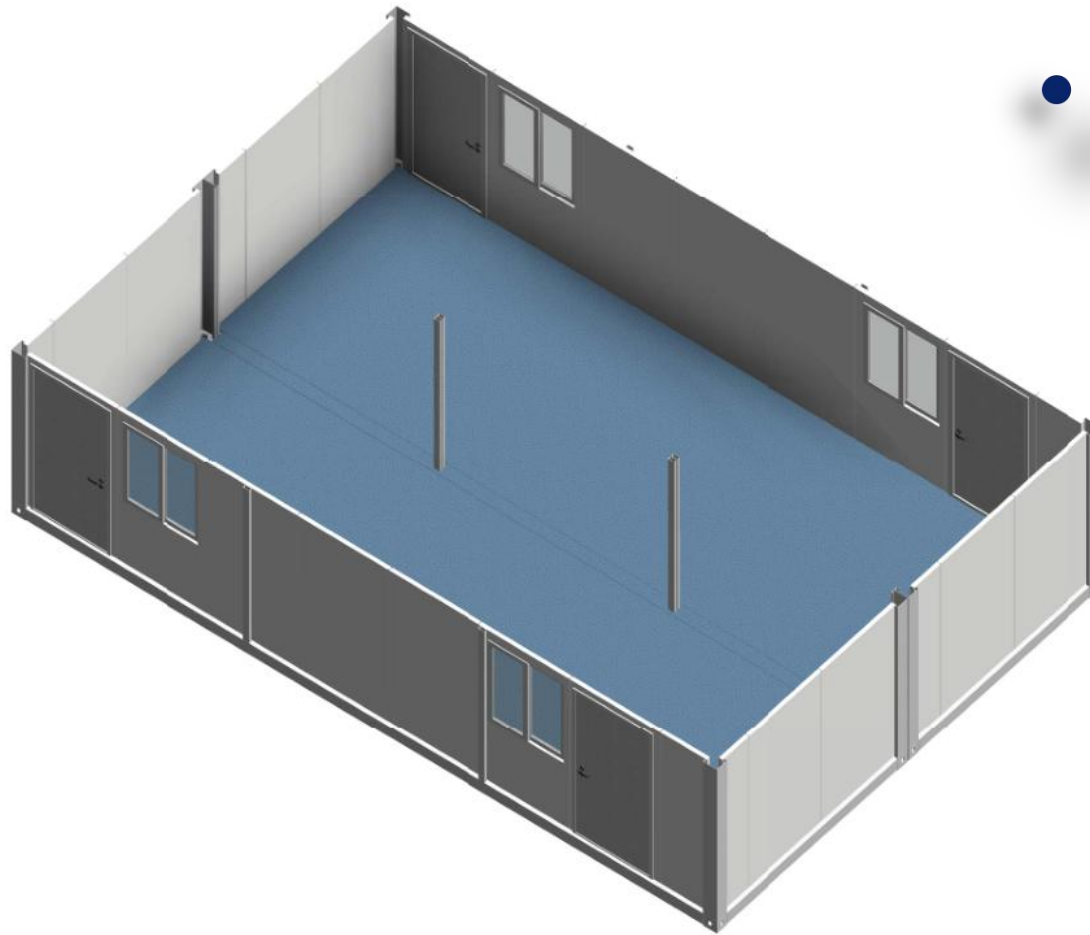


东立面

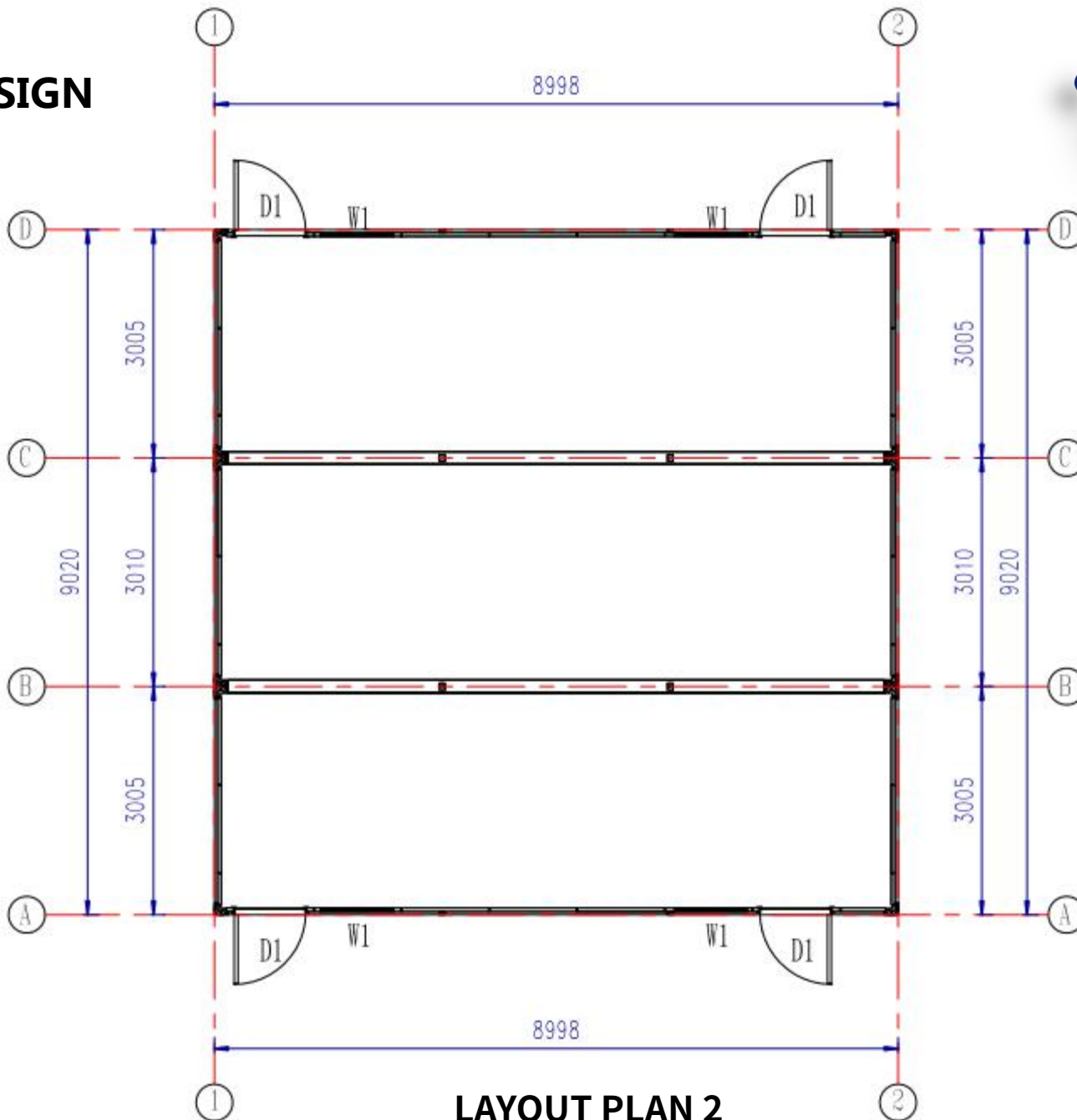


西立面

# DESIGN

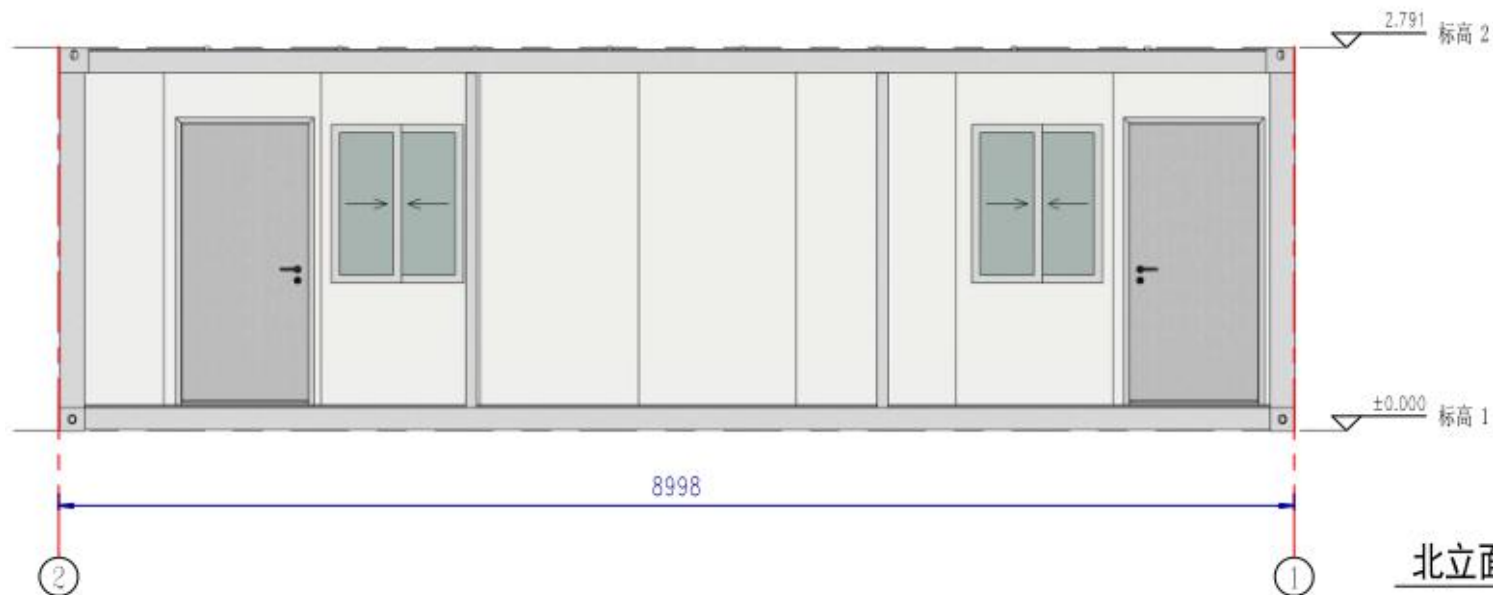
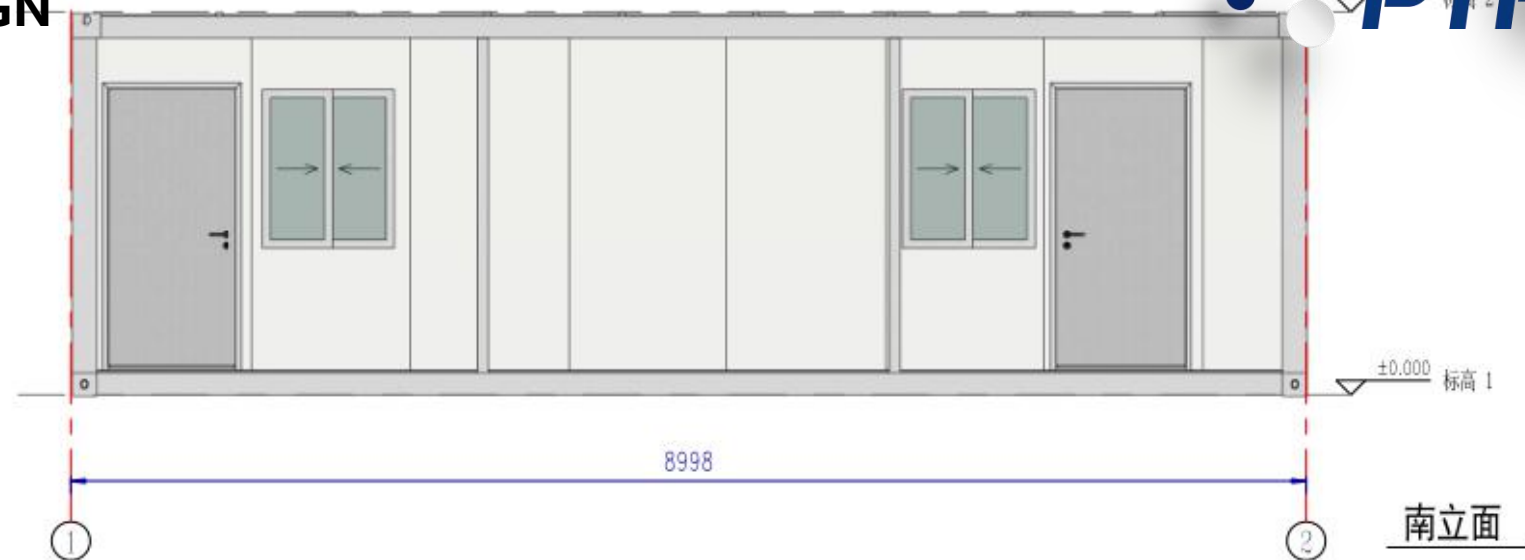


# DESIGN



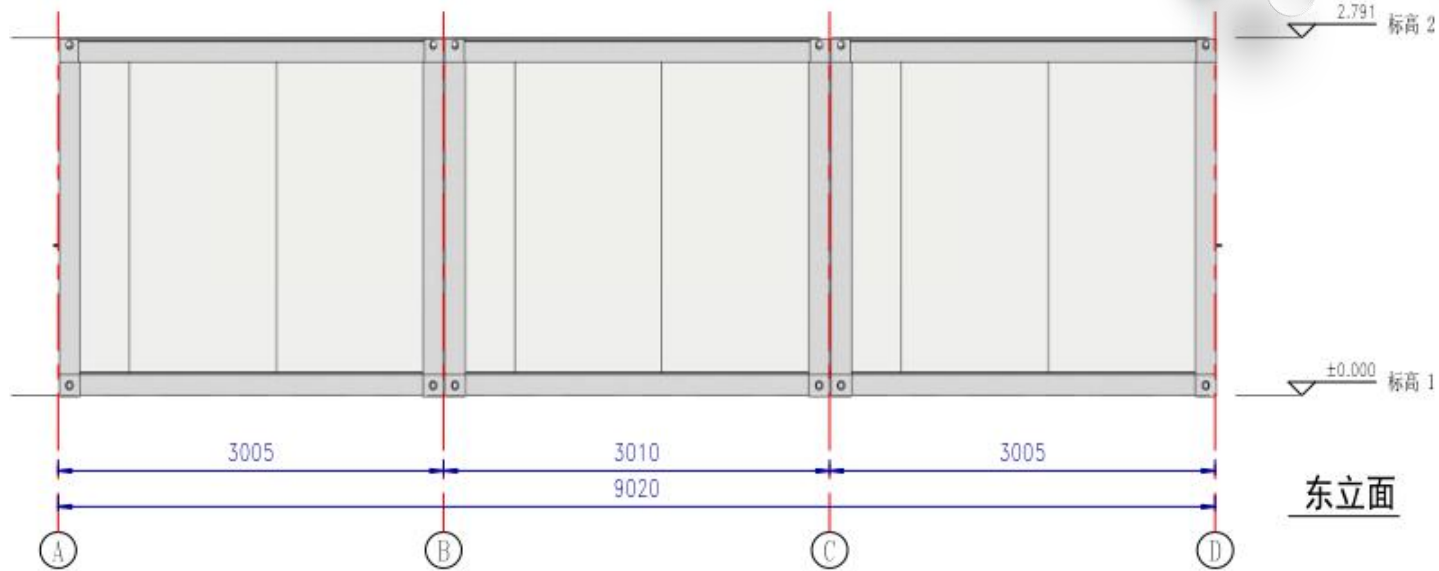
**LAYOUT PLAN 2**

# DESIGN

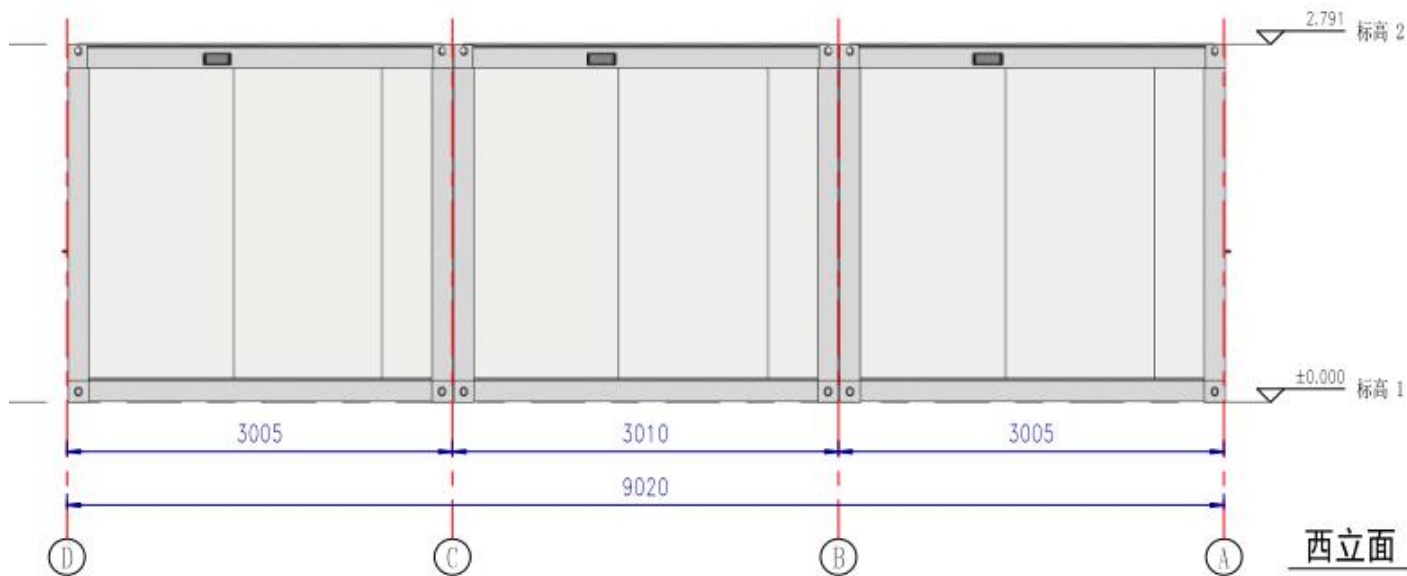




# DESIGN

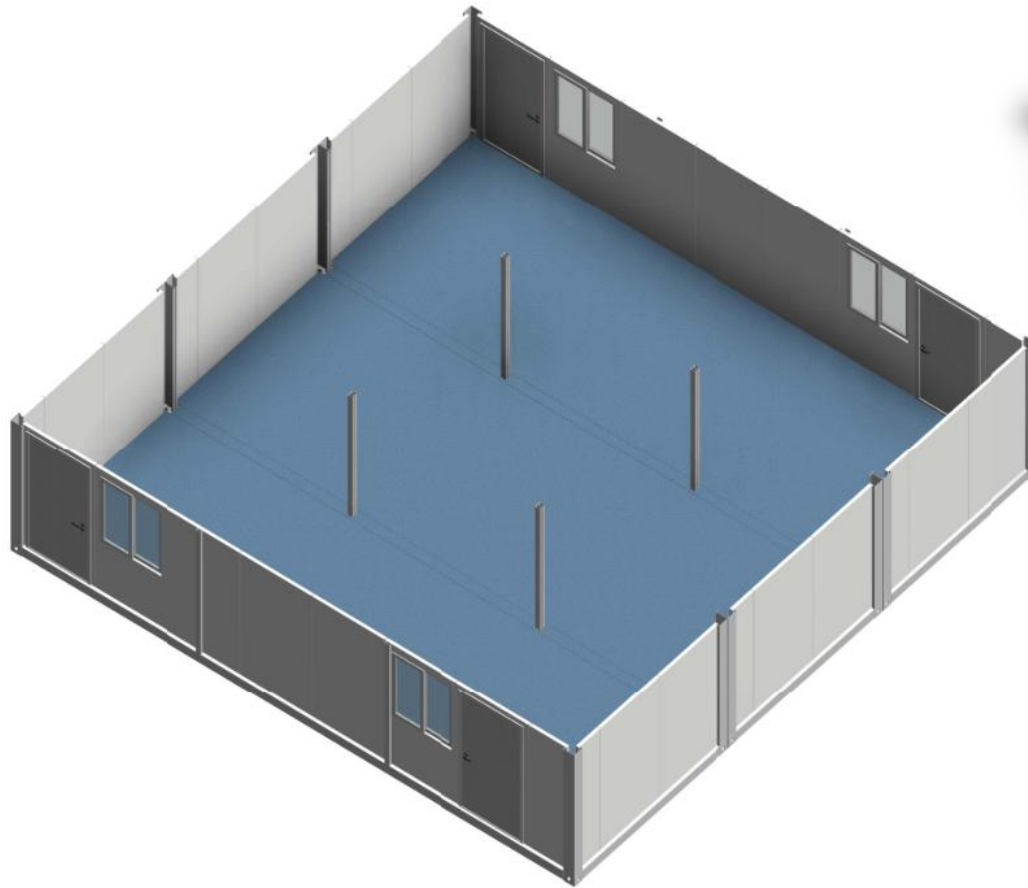


东立面



西立面

# DESIGN



# PRODUCTION & DELIVERY



## PROCUREMENT :

PTH has a mature procurement supply chain, including product raw materials, kitchen and bathroom accessories, home equipment and other supporting facilities. Each year, PTH conducts quality assessments of suppliers, resolutely rejects unqualified suppliers, and guarantees the quality of products from the source.

## PRODUCTION :

PTH owns hundreds of fully automatic mechanized production lines, which ensures high production efficiency and timely delivery. In the manufacturing process, PTH can provide production progress reports to customers through pictures and video. PTH has a professional quality inspection team which takes strict quality control in each process, and make sure defect product never be delivered to client.

## TRANSPORTATION :

PTH, who has more than 20 years of international logistics experience. can provide customers with the best transportation routes, customs declaration, commodity inspection and other services, and truly realizes "door to door."



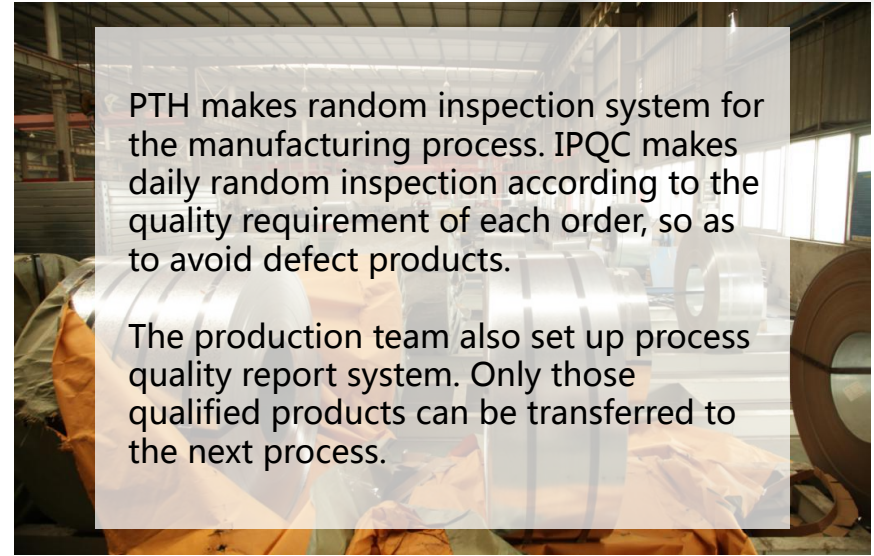
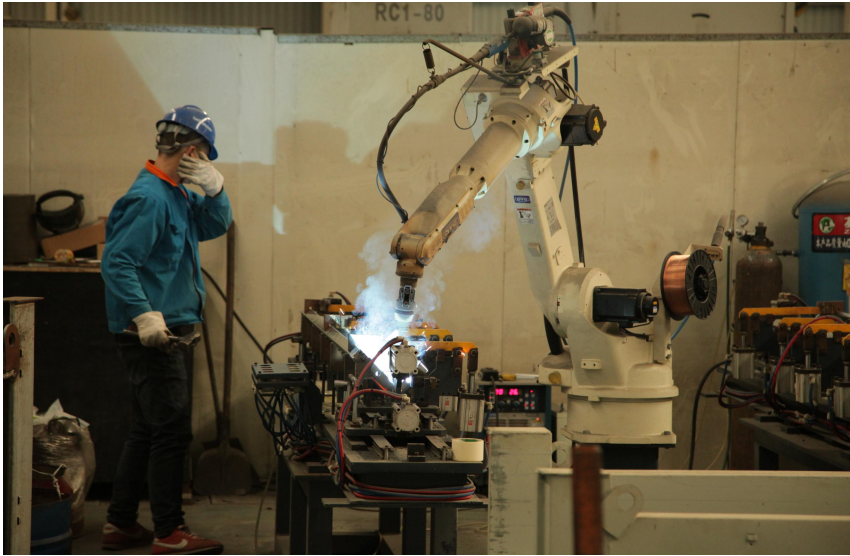
# PRODUCTION PICTURES



Quality is the essence of an enterprise and the foundation of sustainable development. PTH strictly follows the ISO9000 quality system and makes quality control in each process from material procurement to finish product delivery.

For the outsourcing raw material and accessories, it is reported to the ICQC team for inspection. ICQC will inspect according to "Raw Material Inspection Regulations", make sure the material technical specs and quality meets GB standard, then upload the inspection record, QC document and test report to ERP system.

# PRODUCTION PICTURES



PTH makes random inspection system for the manufacturing process. IPQC makes daily random inspection according to the quality requirement of each order, so as to avoid defect products.

The production team also set up process quality report system. Only those qualified products can be transferred to the next process.



## PACKAGE & LOADING



PTH makes the most reasonable package plan according to the structure characteristics and quality requirement. The steel structure parts are packed up in small loading pallet. The modular package design of the spare part effectively reduce the package volume. The spare parts of each module is packed in a separate package, these small package modular combination ensures a easy transportation and installation, which in return makes the loading and unloading much easier, and greatly reduces labor cost.



# INSTALLATION



PTH will provide complete and detailed installation drawings for the product. PTH has professional photography and postproduction personnel who can provide installation videos for the product and intuitively demonstrate the installation steps and installation details of the product.

PTH owns onsite installation guidance experience for dozens of projects such as Mozambican light steel villa resorts, Chilean container camps, etc. It can provide EPC construction services and technical guidance according to the needs of customers to ensure the smooth and safe construction of the houses required by customers and realize real "Check-in".



# INSTALLATION





# INSTALLATION



## CLIENT' S FEEDBACK



We use BIM system to manage and operate the whole project. For the maintenance, PTH provide online technical support or maintenance service on the site per client requirement.

This project is made of our regular container modules, no special requirement and problem during construction. We have cooperation with client for more projects.