

PTH

Steel structure workshop in Albania

1. Project No. : PTW2W110
2. Date : 2011
3. Location : Albania
4. Scale : 3310m²
5. Category : Steel structure
6. Function : Workshop
7. Characteristics: modern appearance workshop with strong seismic performance



PROJECT DESIGN



PTH owns 100+ architect and engineers at home and abroad, to provide customized design service for client with different requirements. We use the relevant information data of construction projects as the basis of the model to build the building model, and simulate the real information of the building through digital information simulation.

At present, we have finished the Revit research and development of company's products, laying a solid foundation to finish design effectively and accurately and also presenting details and three dimensional effects of our company's products to customers.

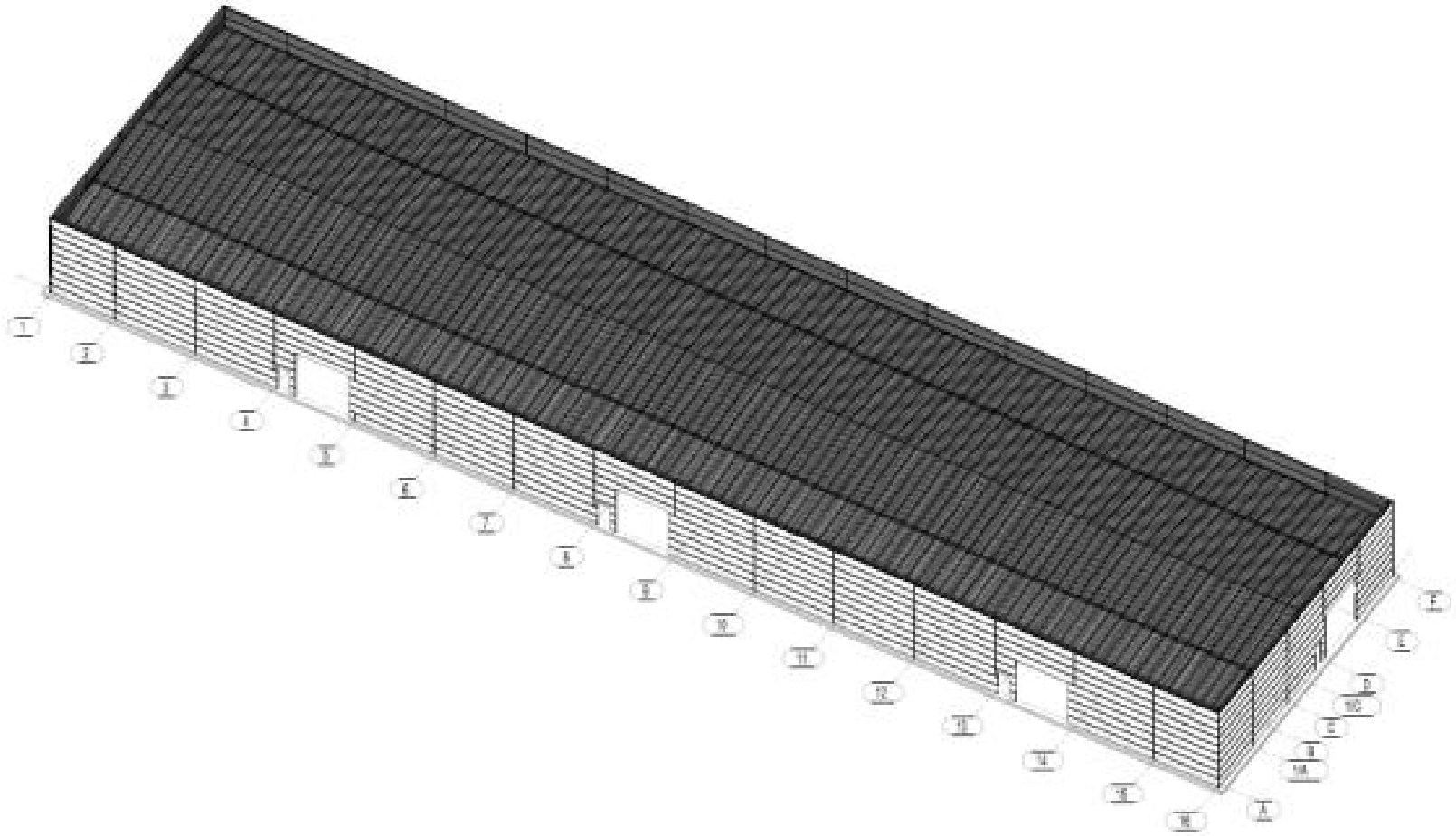
Project features:

The customer is an Albanian supplier of doors ,windows and building materials accessories, whose products radiate to neighboring countries, such as Greece. With the expansion of production scale,They decided to build new workshop

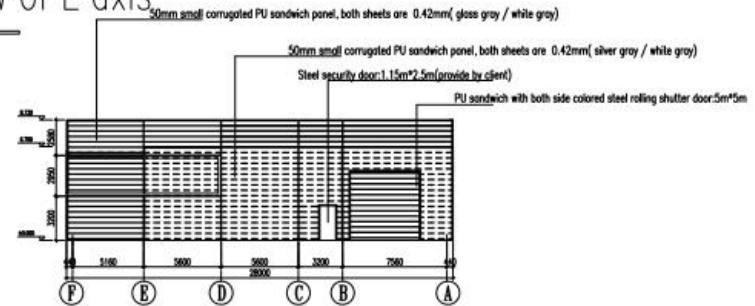
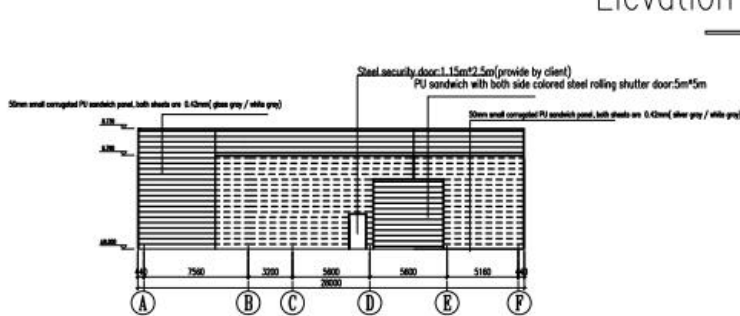
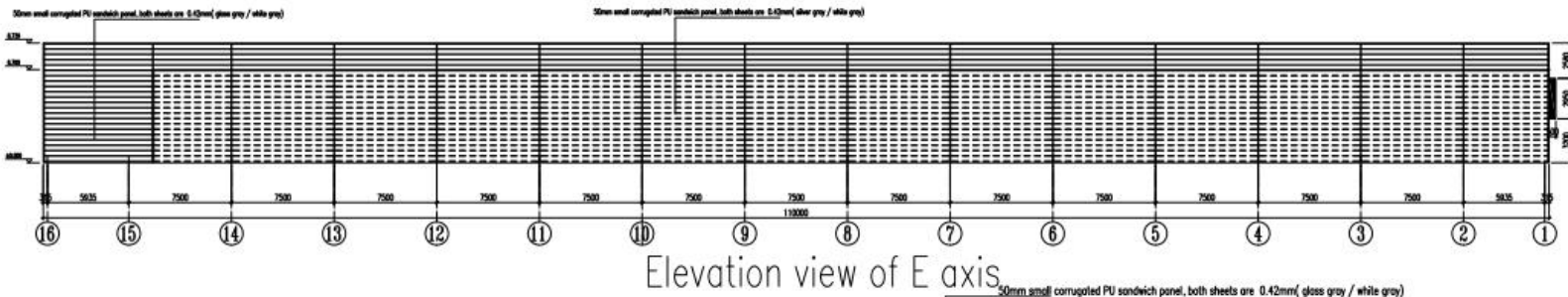
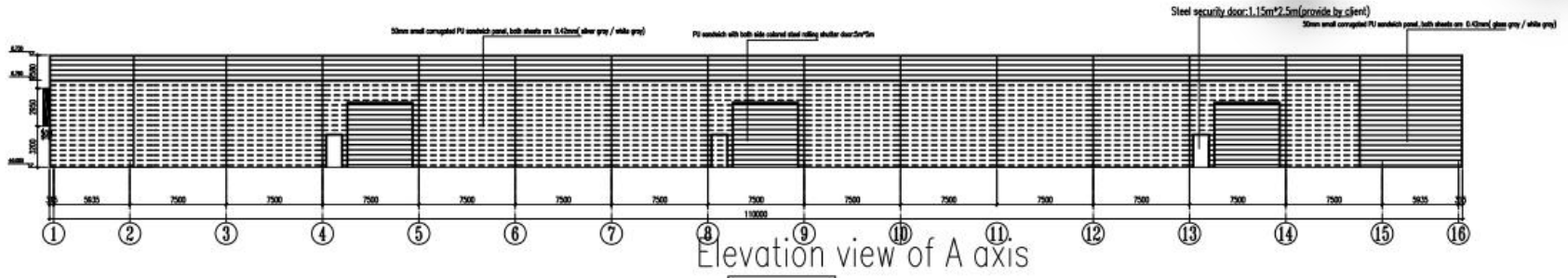
The plant is located at the high-speed roadside, so the appearance requirements are high. The wall adopts transverse type 50mm small corrugated Pu sandwich board, and color blocks for decoration to meet the appearance requirements. The roof adopts 0.5mm1025 color steel sheet +50mm glass wool insulation + aluminum foil paper + stainless steel wire mesh.

Due to the frequent occurrence of local earthquakes, its seismic performance is specially considered in the design. Considering the practicability of the plant, a mezzanine office is set in the plant.

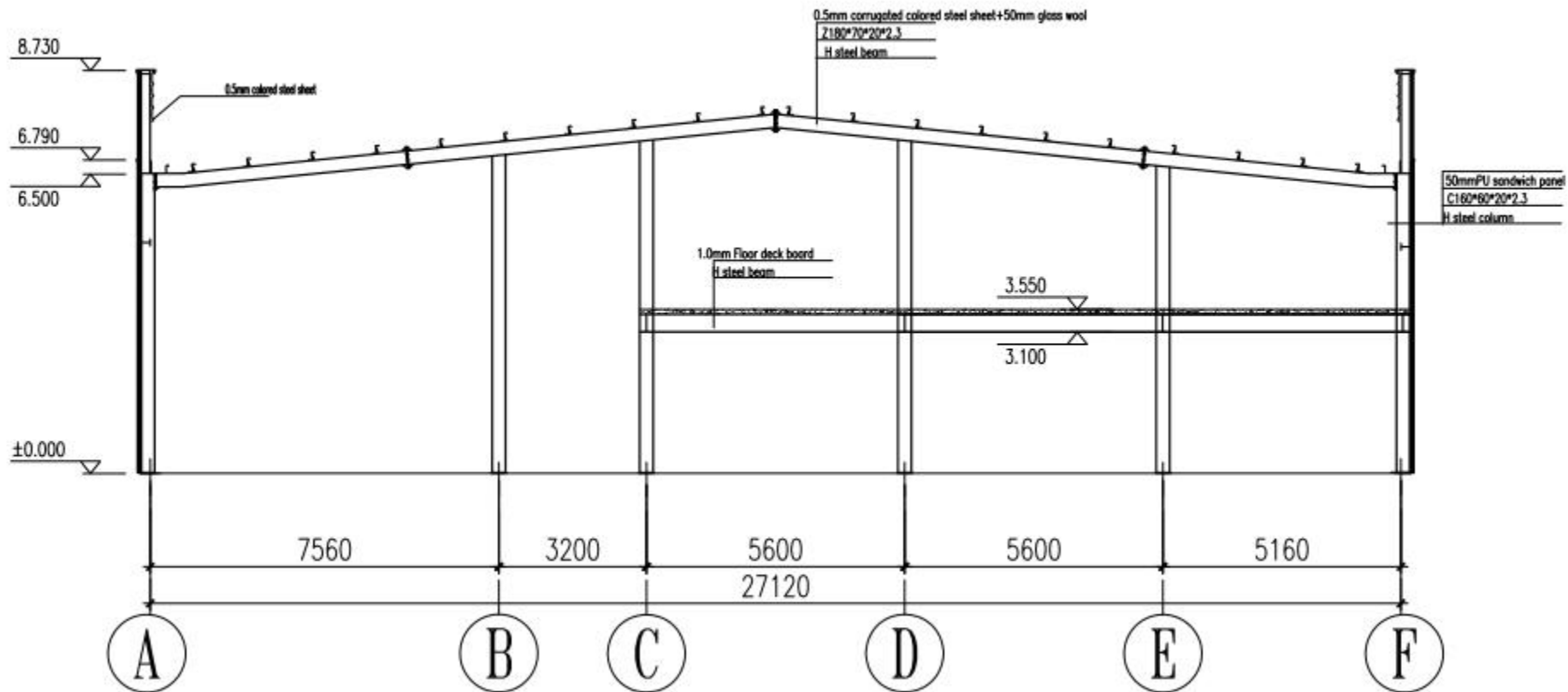
DESIGN



The preliminary design is made in accordance to client' s requirement and local building code. After getting the permission by local authority, PTH will do the shop drawing for production.



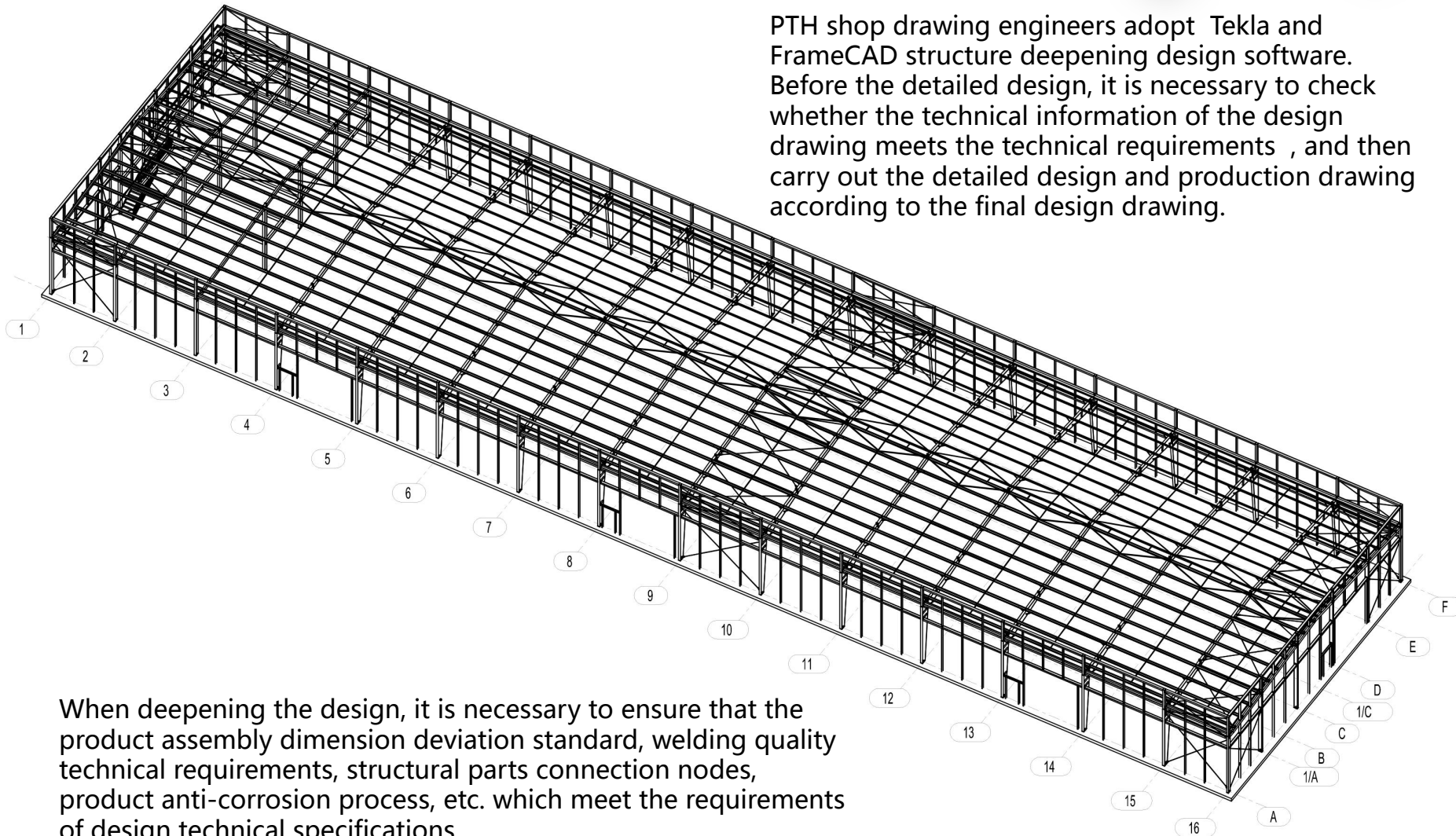
DESIGN



SHOP DRAWING

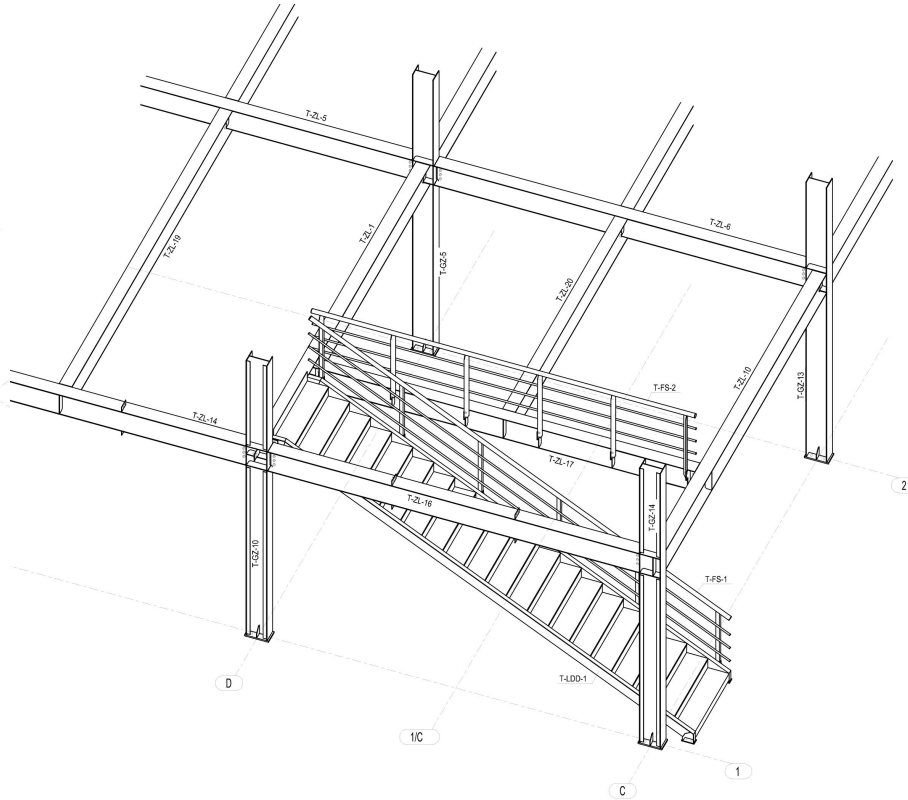
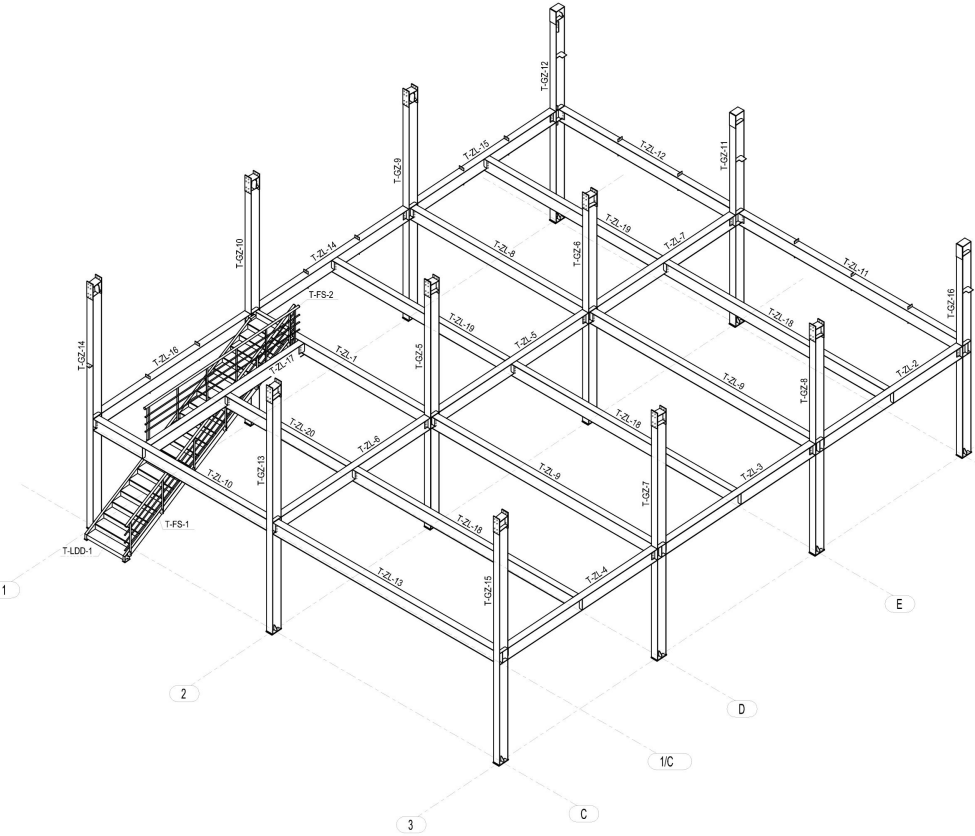


PTH shop drawing engineers adopt Tekla and FrameCAD structure deepening design software. Before the detailed design, it is necessary to check whether the technical information of the design drawing meets the technical requirements, and then carry out the detailed design and production drawing according to the final design drawing.



When deepening the design, it is necessary to ensure that the product assembly dimension deviation standard, welding quality technical requirements, structural parts connection nodes, product anti-corrosion process, etc. which meet the requirements of design technical specifications.

SHOP DRAWING

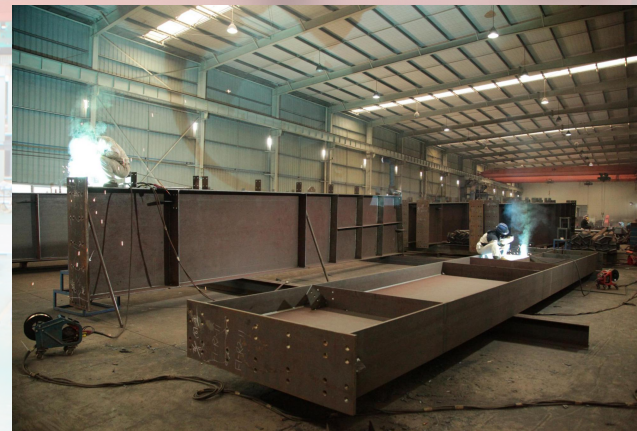


PRODUCTION & DELIVERY



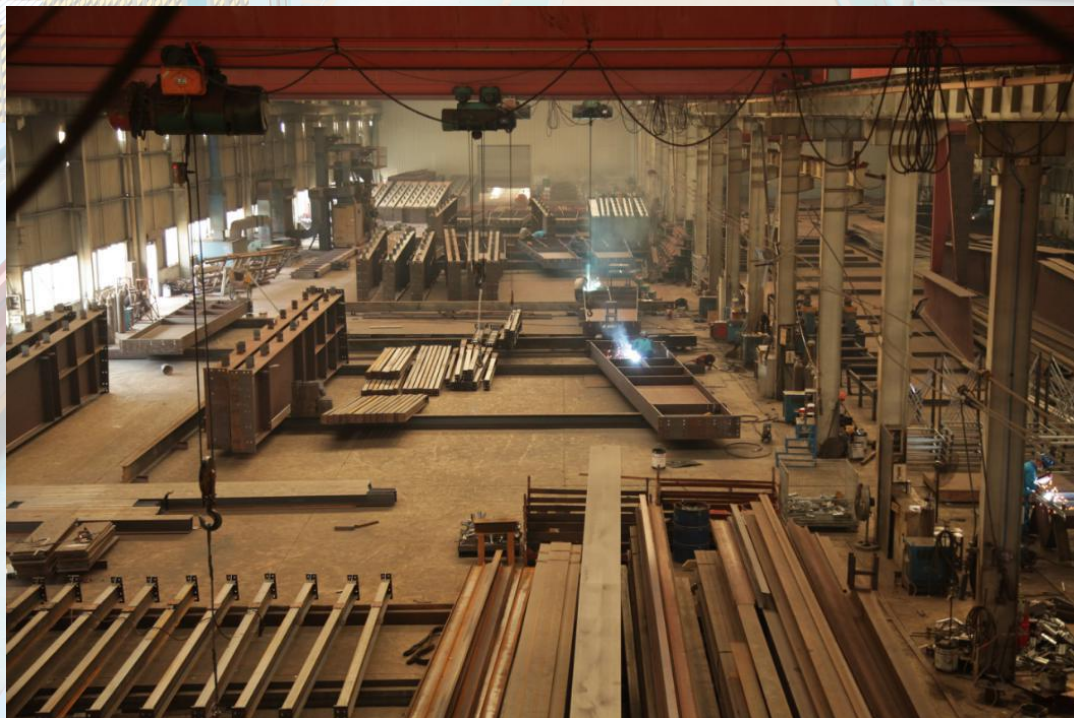
PROCUREMENT :

PTH has a mature procurement supply chain, including product raw materials, kitchen and bathroom accessories, home equipment and other supporting facilities. Each year, PTH conducts quality assessments of suppliers, resolutely rejects unqualified suppliers, and guarantees the quality of products from the source.



PRODUCTION :

PTH owns hundreds of fully automatic mechanized production lines, which ensures high production efficiency and timely delivery. In the manufacturing process, PTH can provide production progress reports to customers through pictures and video. PTH has a professional quality inspection team which takes strict quality control in each process, and make sure defect product never be delivered to client.



TRANSPORTATION :

PTH, who has more than 20 years of international logistics experience. can provide customers with the best transportation routes, customs declaration, commodity inspection and other services, and truly realizes "door to door."

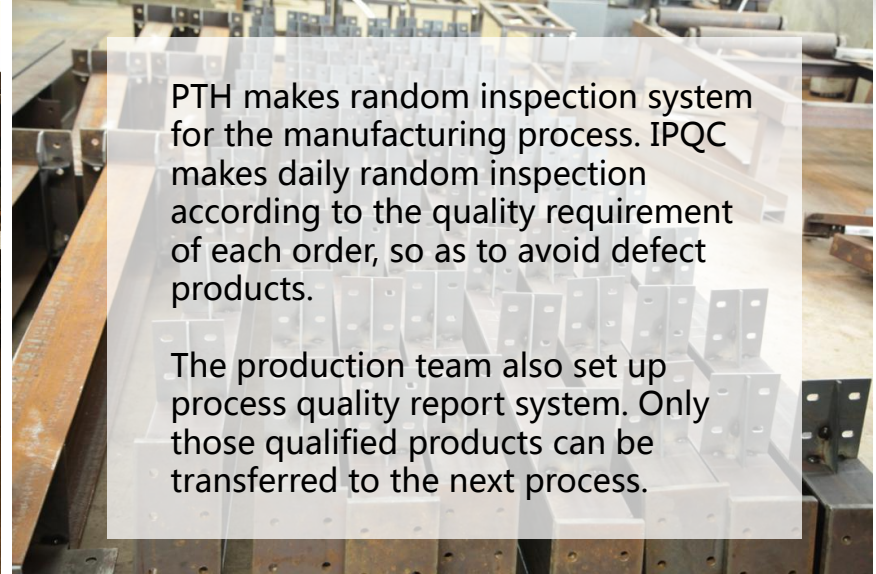
PRODUCTION PICTURES



Quality is the life of a enterprise and the foundation of sustainable development. PTH strictly follows the ISO9000 quality system and make quality control in each process from material procurement to finish product delivery.

For the outsourcing raw material and accessories, it is reported to the ICQC team for inspection. ICQC will inspect according to “Raw Material Inspection Regulations” , make sure the material technical specs and quality meets GB standard, then upload the inspection record, QC document and test report to ERP system.

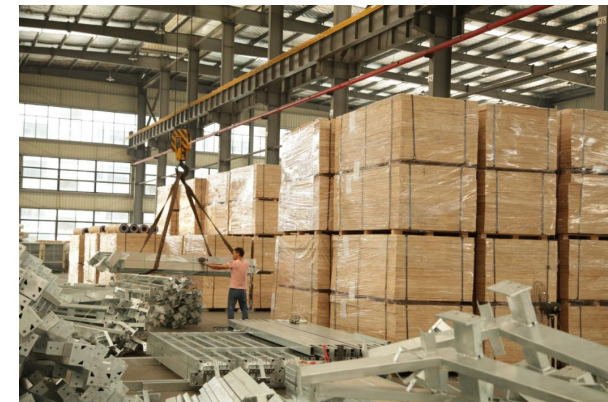
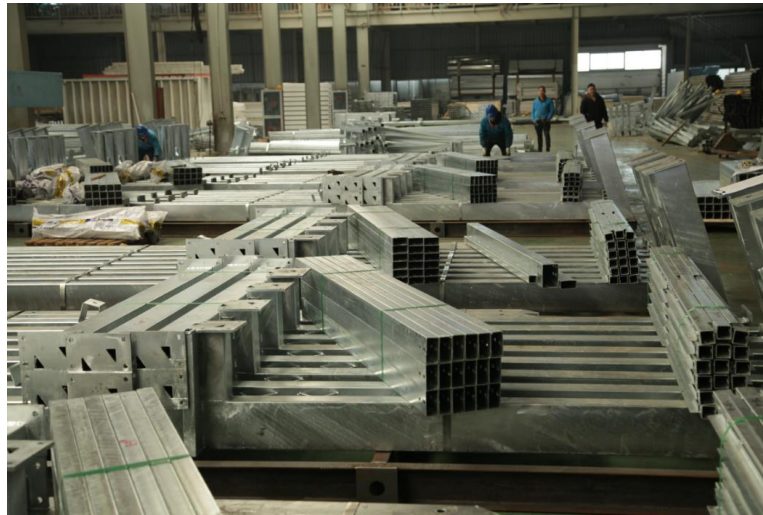
PRODUCTION PICTURES



PACKAGE & LOADING



PTH designs reasonable packaging scheme according to product structure characteristics / customer quality requirements. The logistics of this project has a total quantity of 3800 pieces, a total weight of 136600kgs, and 7 vehicles for all goods, with a total volume of 455m³. PTH adopts the unit design of parts in packaging, which effectively reduces the product packaging volume. Each unit part adopts independent small packaging, and multiple small packages are combined to form an overall packaging convenient for transportation and installation. And because of the overall packaging, it is convenient for loading and unloading, reducing the labor cost.



PACKAGE & LOADING



INSTALLATION



PTH will provide complete and detailed installation drawings for the product. PTH has professional photography and post-production personnel who can provide installation videos for the product and intuitively demonstrate the installation steps and installation details of the product.

PTH owns on-site installation guidance experience for dozens of projects such as Mozambican light steel villa resorts, Chilean container camps, etc. It can provide EPC construction services and technical guidance according to the needs of customers to ensure the smooth and safe construction of the houses required by customers and realize real "Check-in".

INSTALLATION



CLIENT FEEDBACK



We use BIM system to manage and operate the whole project. For the maintenance, PTH provide online technical support or maintenance service on the site per client requirement.

In the cooperation, PTH service is in place, and the feedback to customers is rapid, which has won great favor. In terms of products, PTH's design scheme is very superior, and the project quality is reliable, which can make customers feel at ease



CLIENT FEEDBACK



URL : www.pthhouse.com / www.putianhouse.com
E-mail : inquiry@putianhouse.com

CLIENT FEEDBACK



URL : www.pthouse.com / www.putianhouse.com
E-mail : inquiry@putianhouse.com